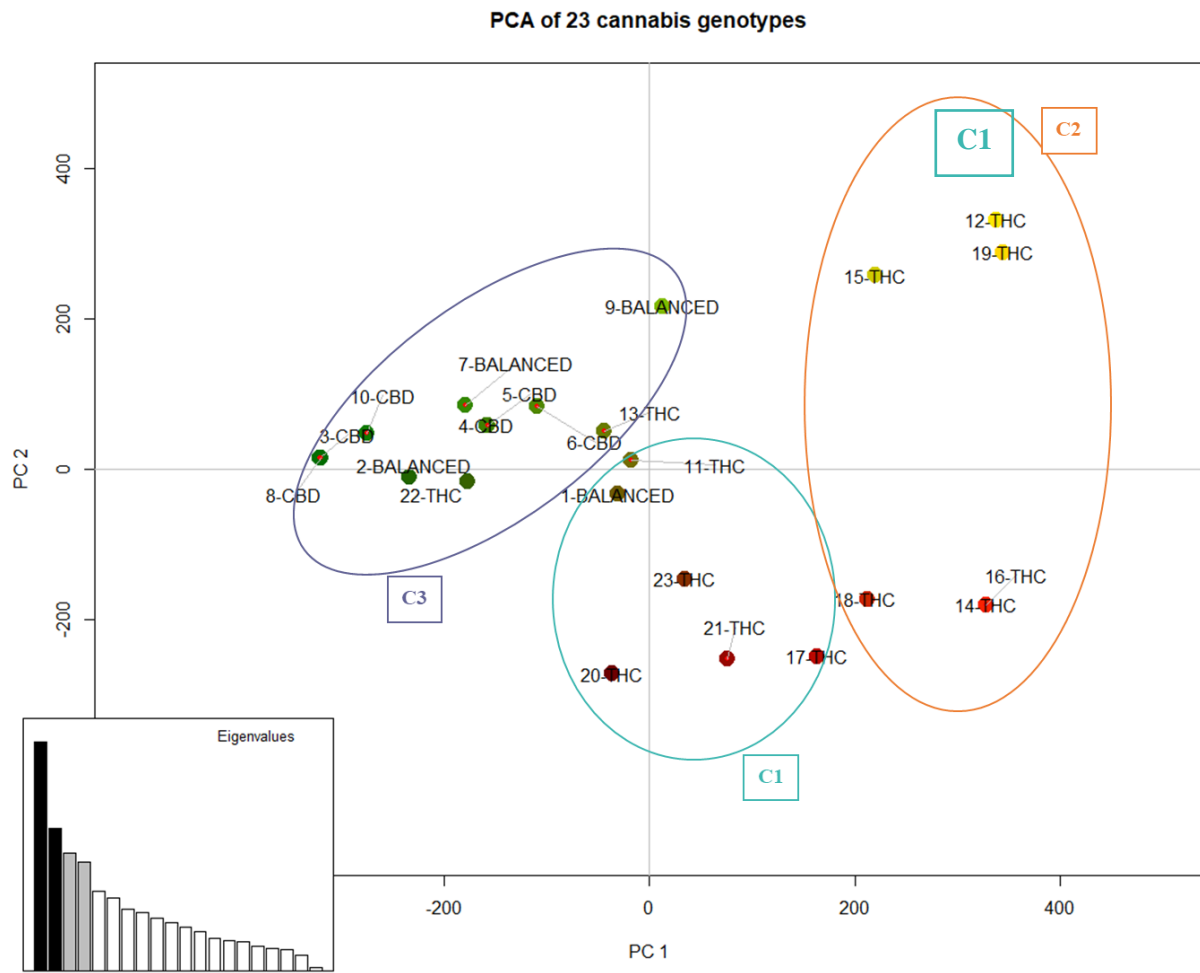
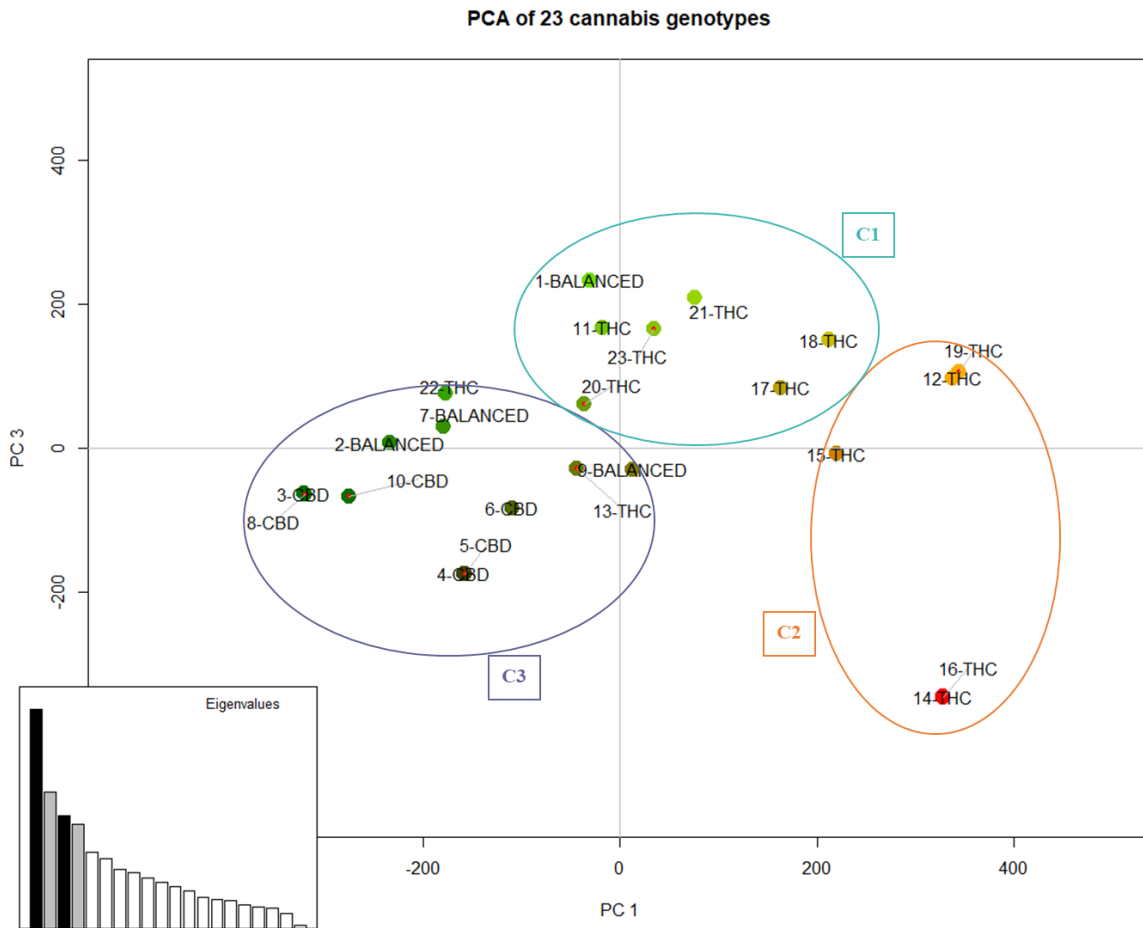


# S1 Fig. PCA of 23 strains using whole set of SNPs

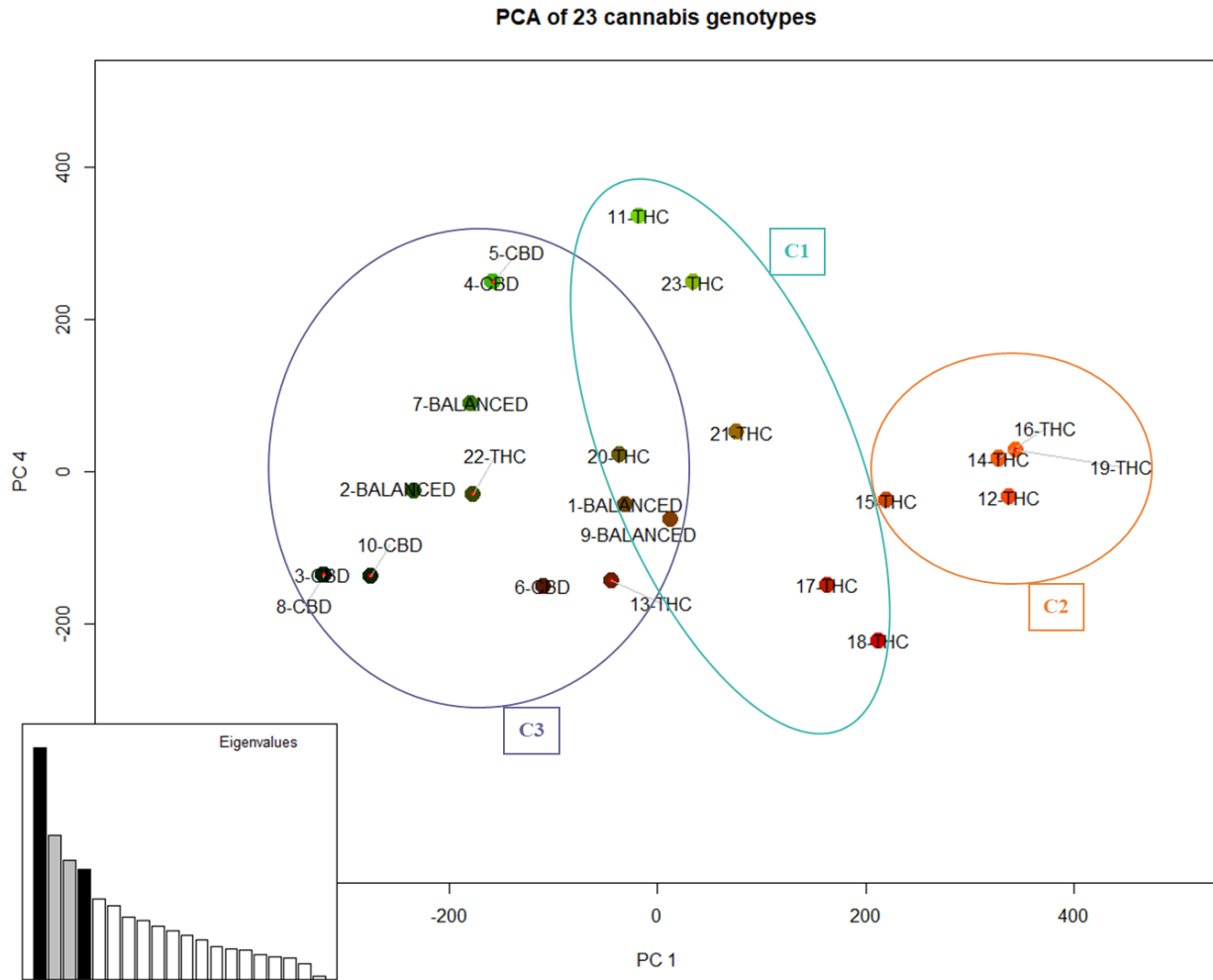
(a) P1&P2



(b) P1&P3

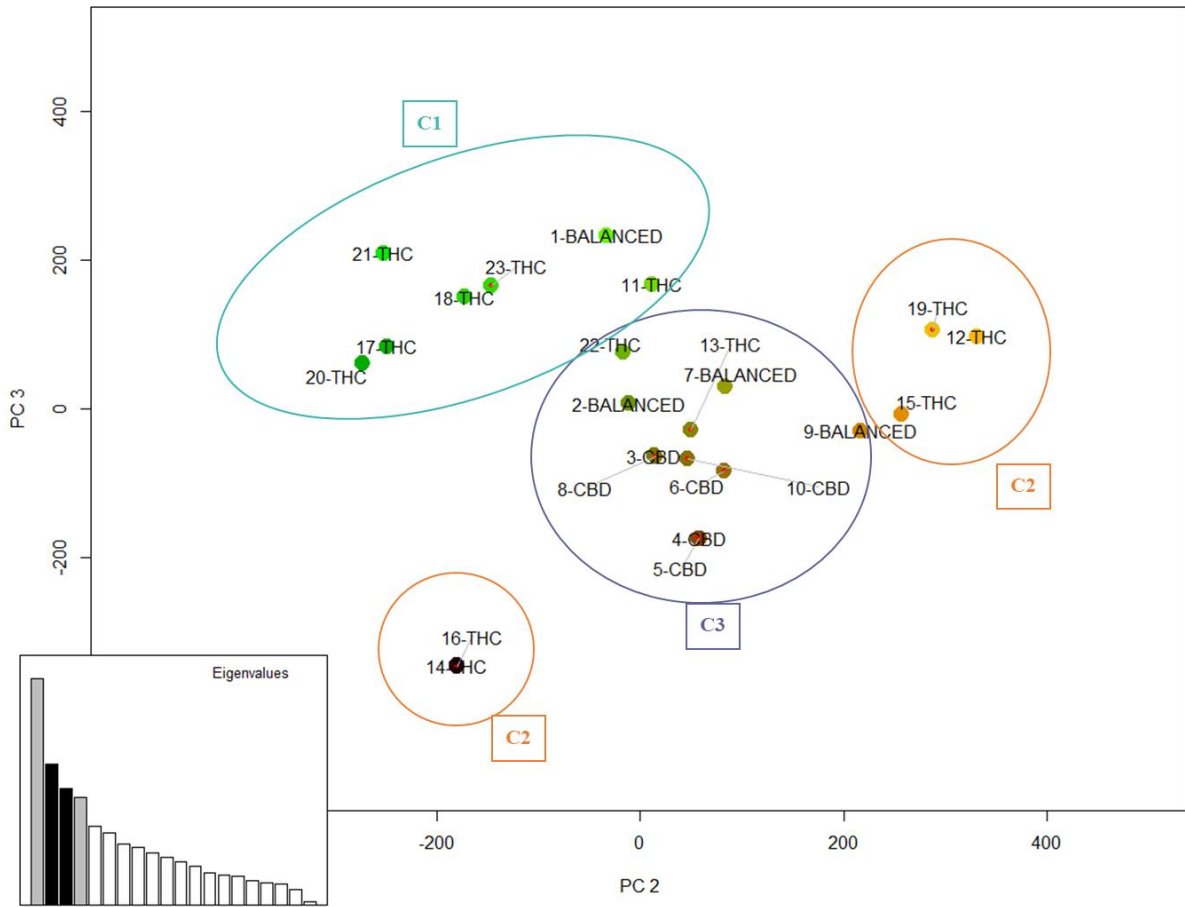


(c) P1&P4

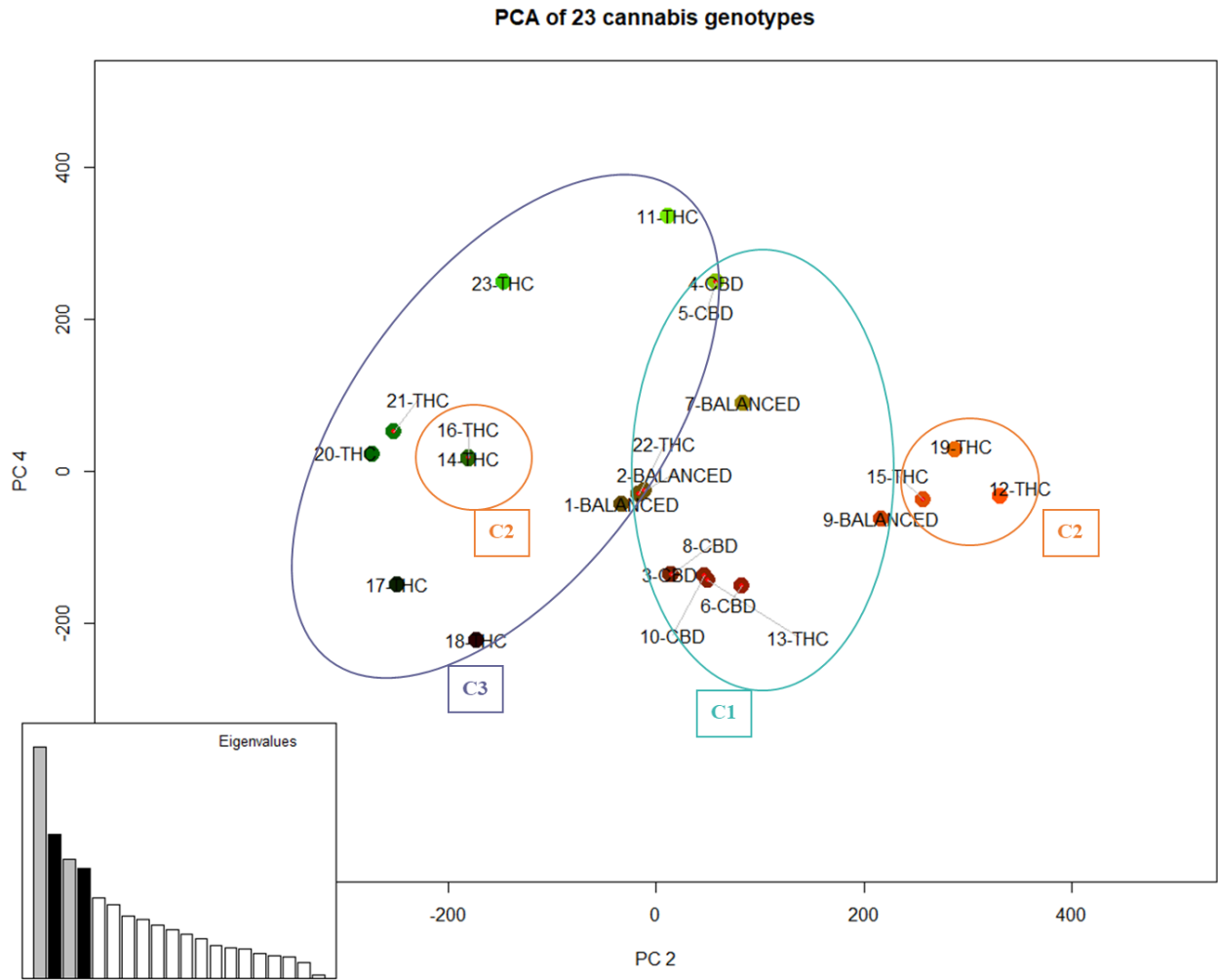


(d) P2&P3

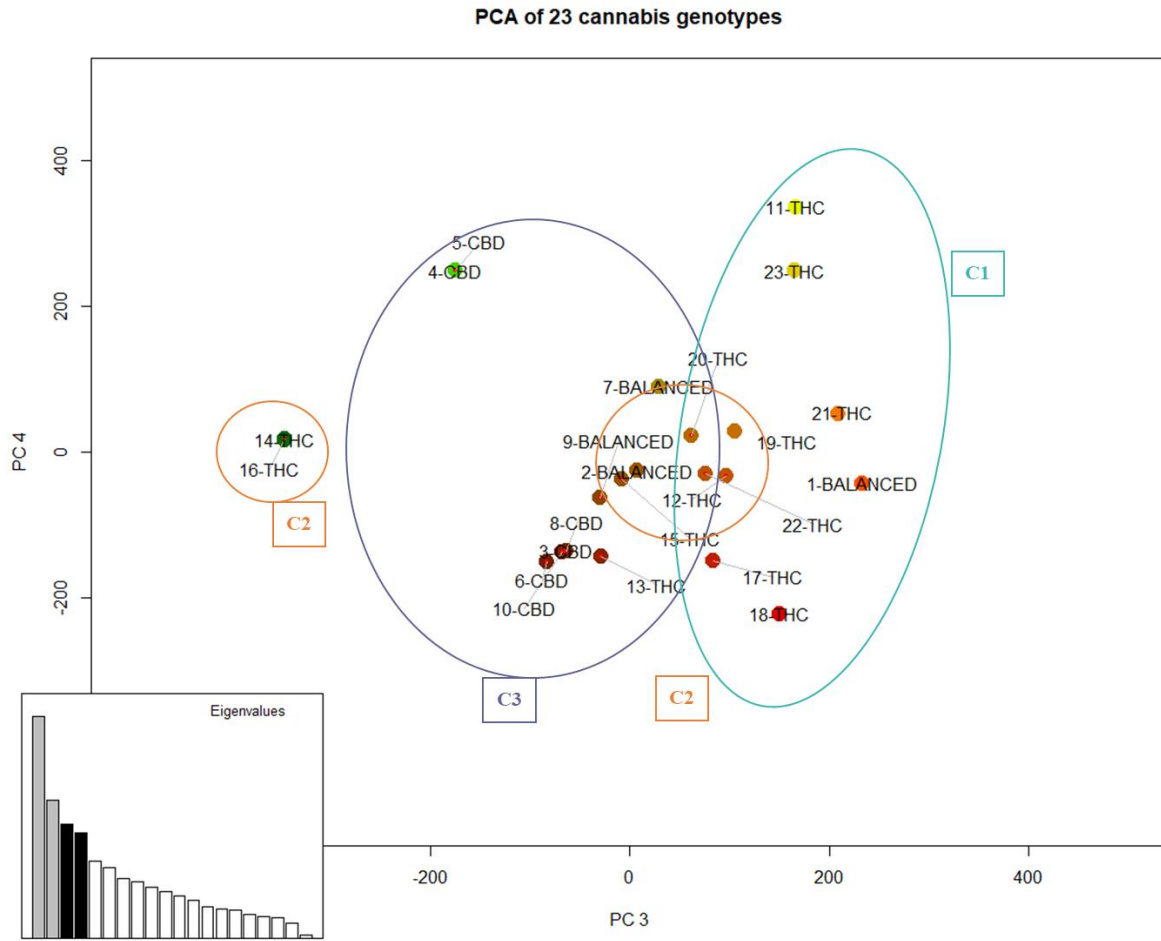
PCA of 23 cannabis genotypes



(e) P2&P4



(f) P3&P4



**S1 Fig.** Scatter plot of 23 cannabis strains on (a) PC1 & PC2, (b) PC1 & PC3, (c) PC1 & PC4 (d) PC2 & PC3 (e) PC2 & PC4 (f) PC3 & PC4 using 137,858 SNPs. Clusters indicated as C1, C2, and C3 correspond to W-SNPs in **Table 1**.