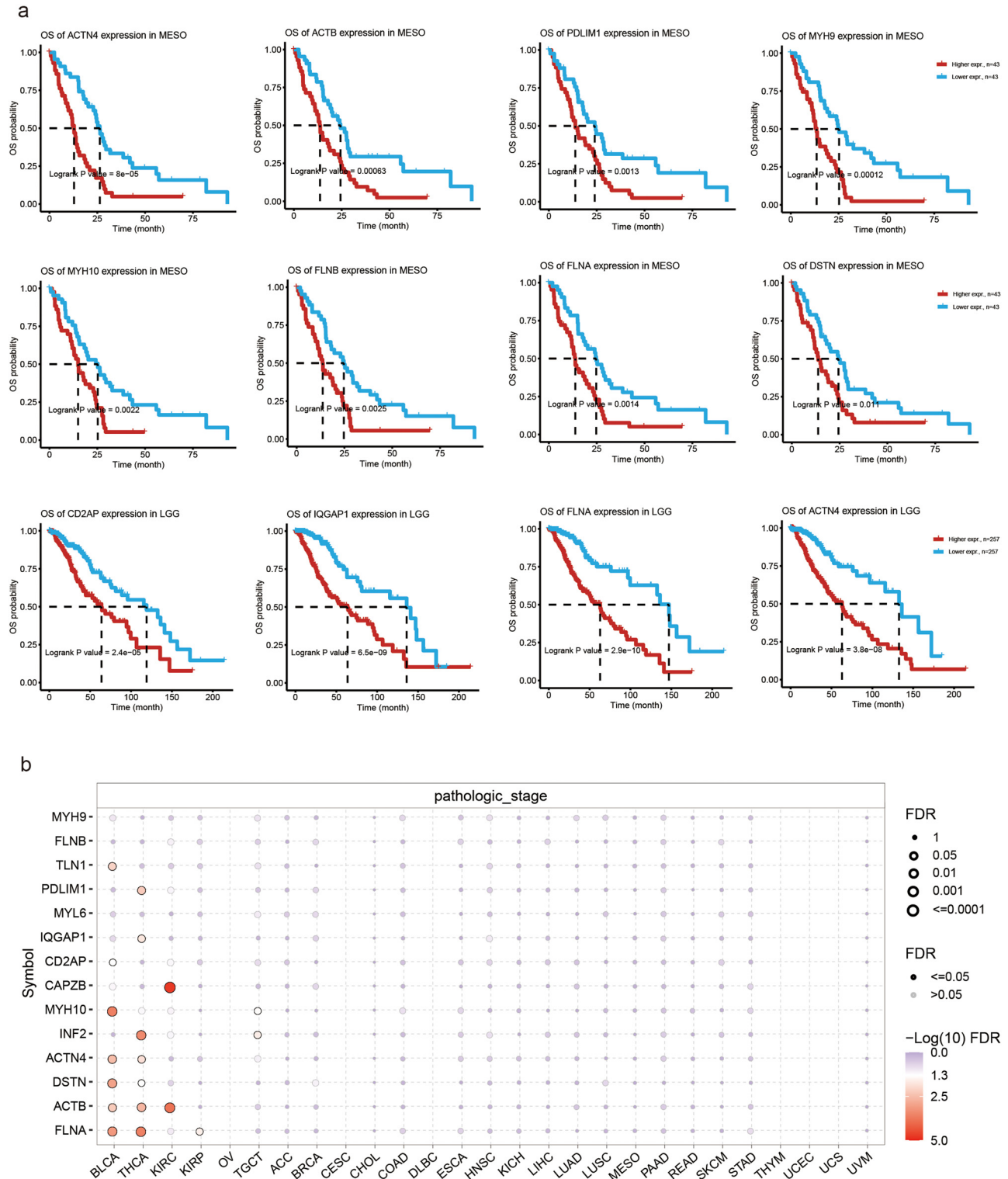
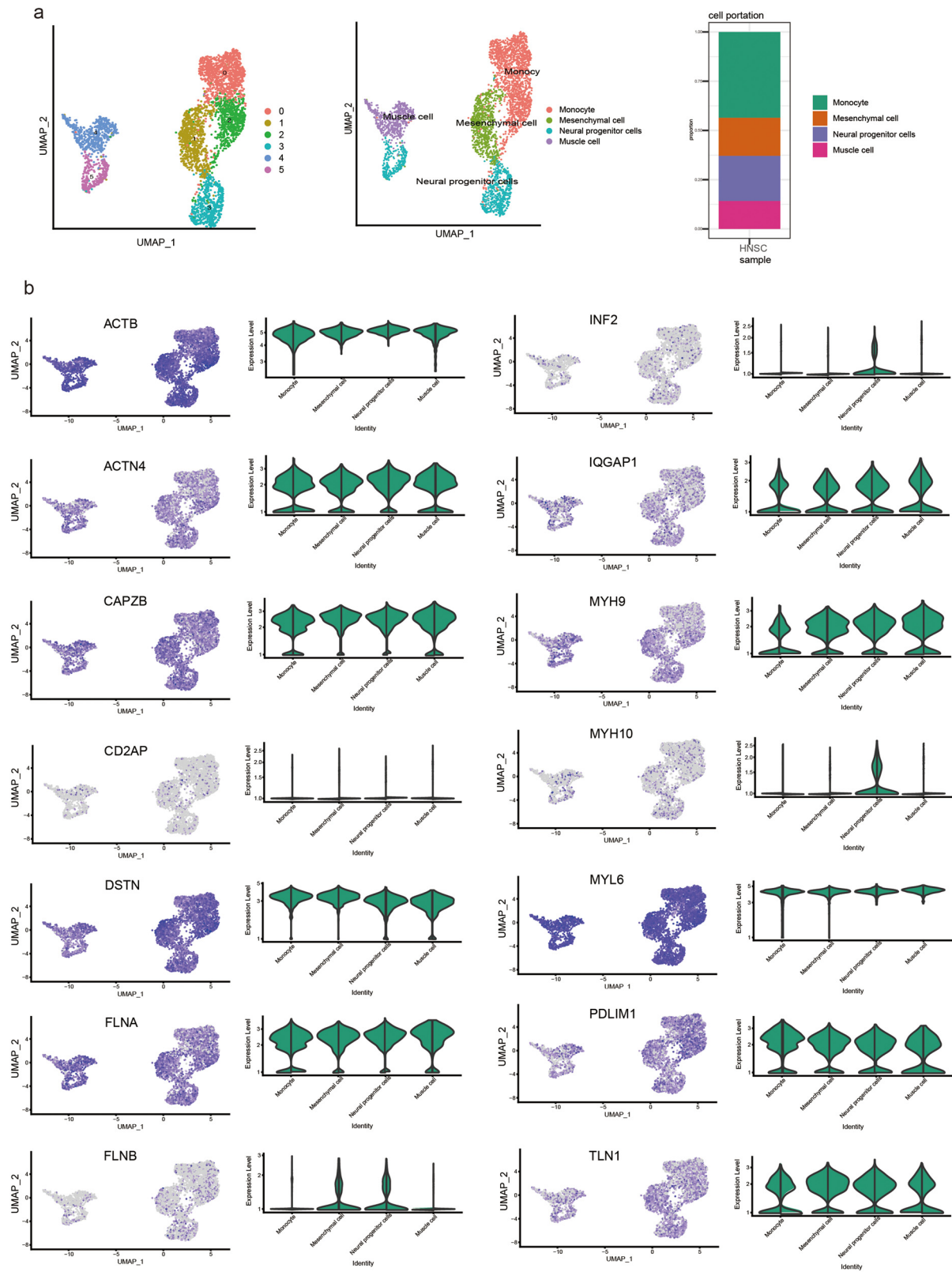


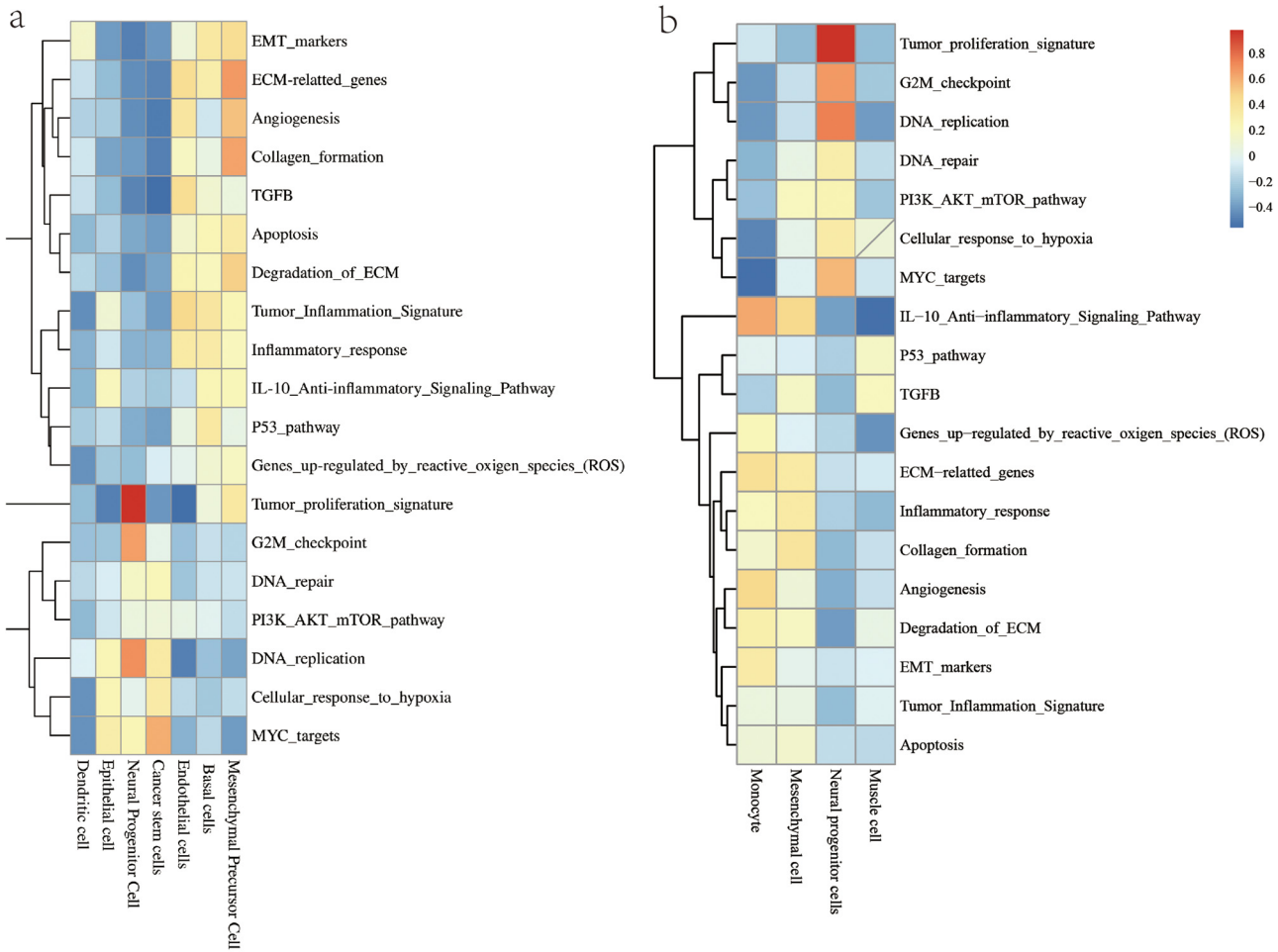
# Supplementary material



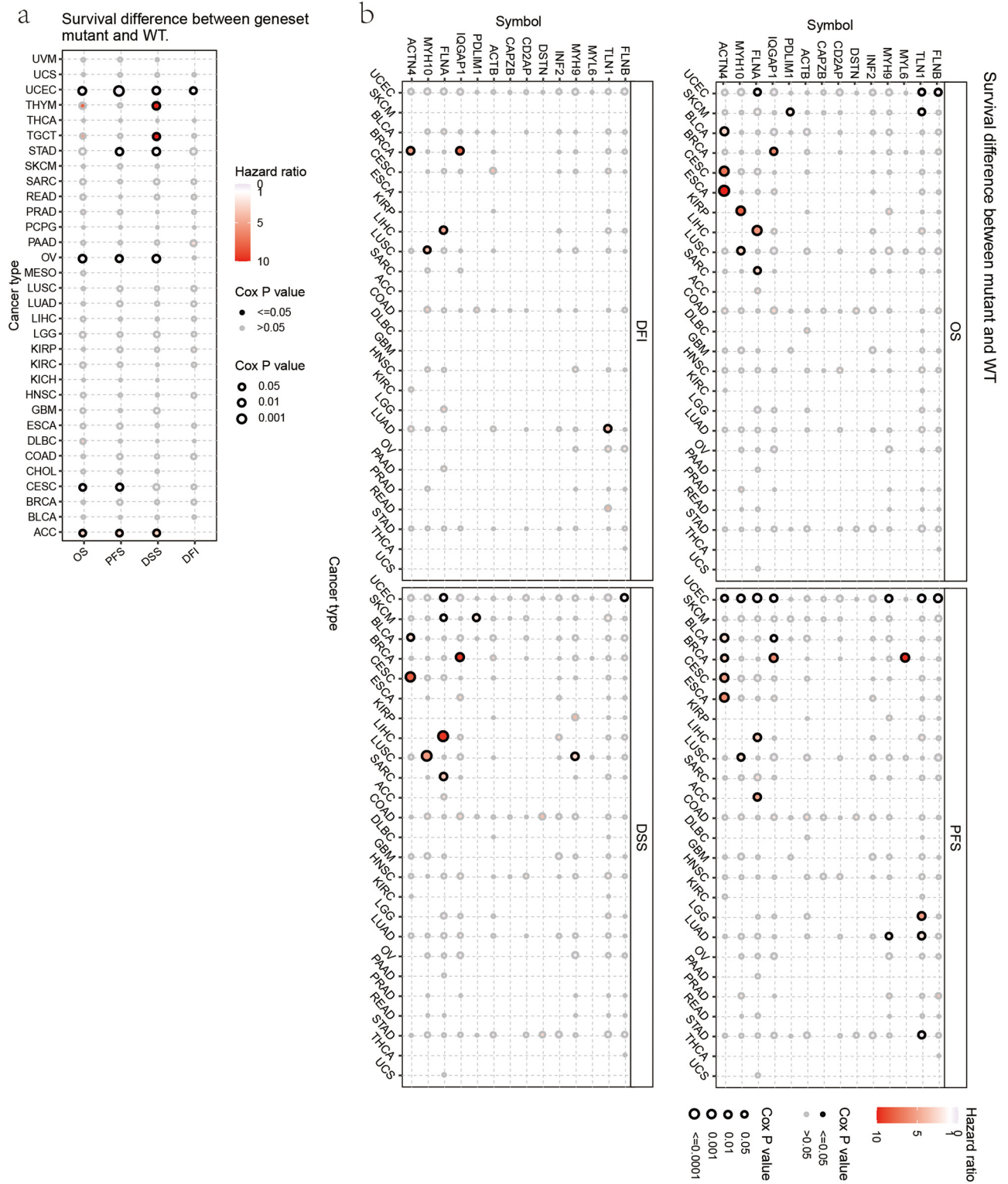
**Figure S1:** (a) Survival analysis based on a single gene expression level; (b) The correlation between disulfidptosis-related gene expression with cancer pathologic stage.



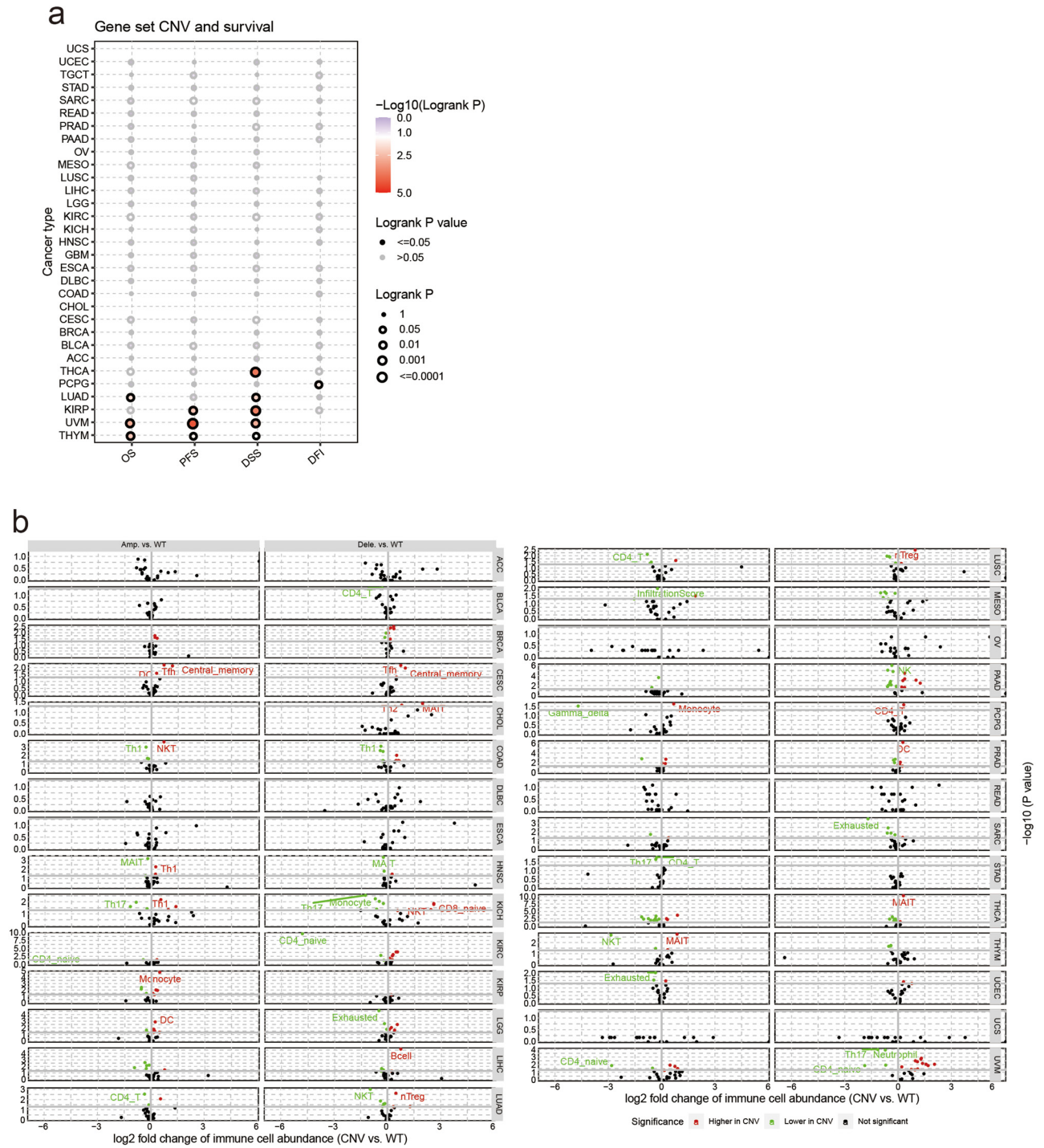
**Figure S2:** Single-cell sequencing analyzing the disulfidptosis-related gene expression in HNSC cells. (a) Cells were grouped and identified; (b) the expression level of disulfidptosis-related genes in different cell clusters.



**Figure S3:** Heatmap of score in each pathway in different cell subsets of BLCA (a) and HNSC (b). Each column represents a diverse group or a distinct cell subpopulation, and each row represents a pathway, with more red colors representing higher scores and more blue colors representing lower scores.



**Figure S4:** (a) The correlation between SNV with survival; (b) summarizes the survival difference between gene set mutant (deleterious) and wide type in the selected cancers.



**Figure S5:** (a) summarizes the profile of survival between gene set CNV groups in the selected cancers; (b) summarizes the difference of immune infiltration between gene set CNV groups.