

VEH/SIV group

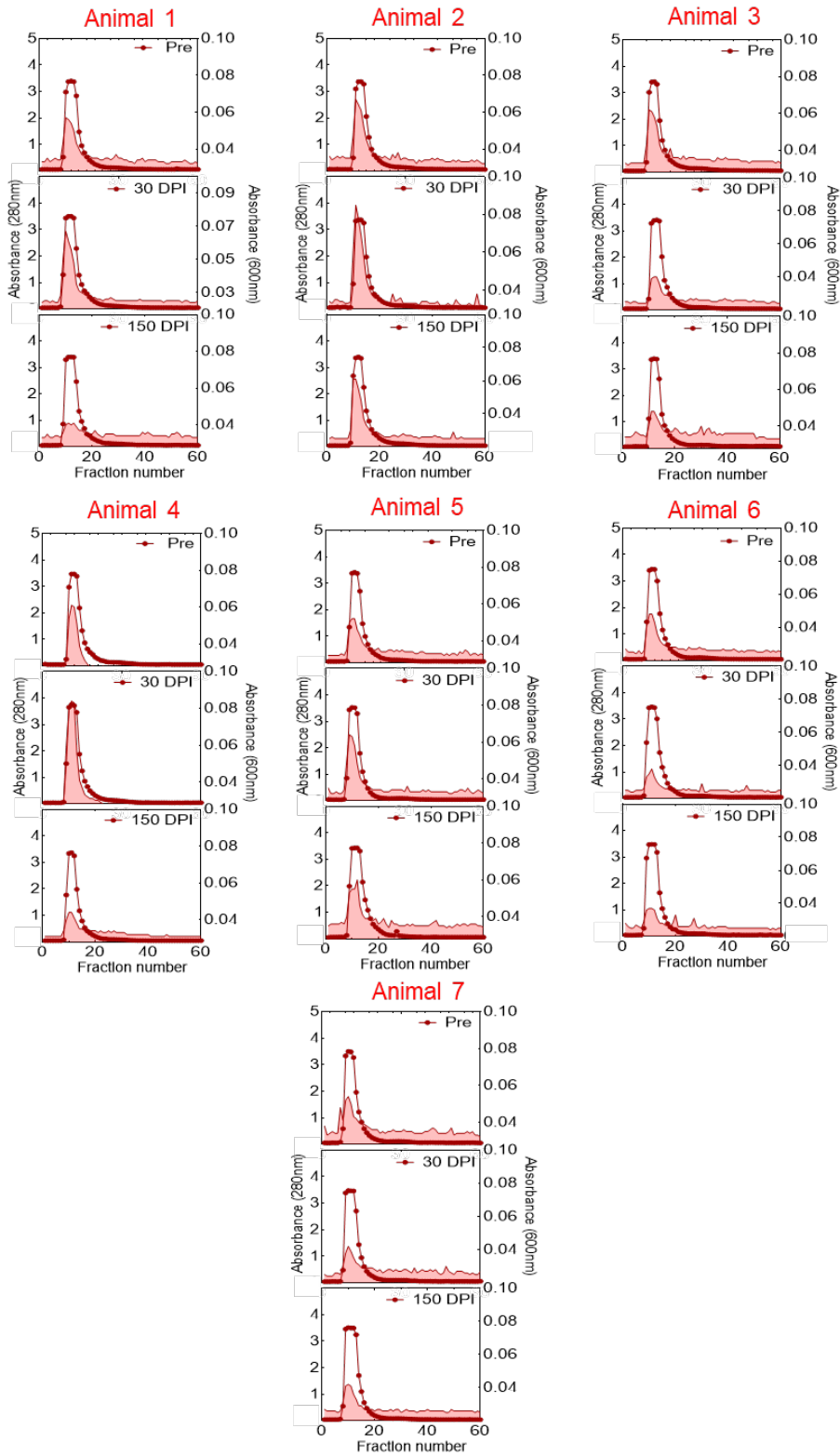


Figure S1: UV-Vis absorbance profile for individual VEH/SIV group.

THC/SIV

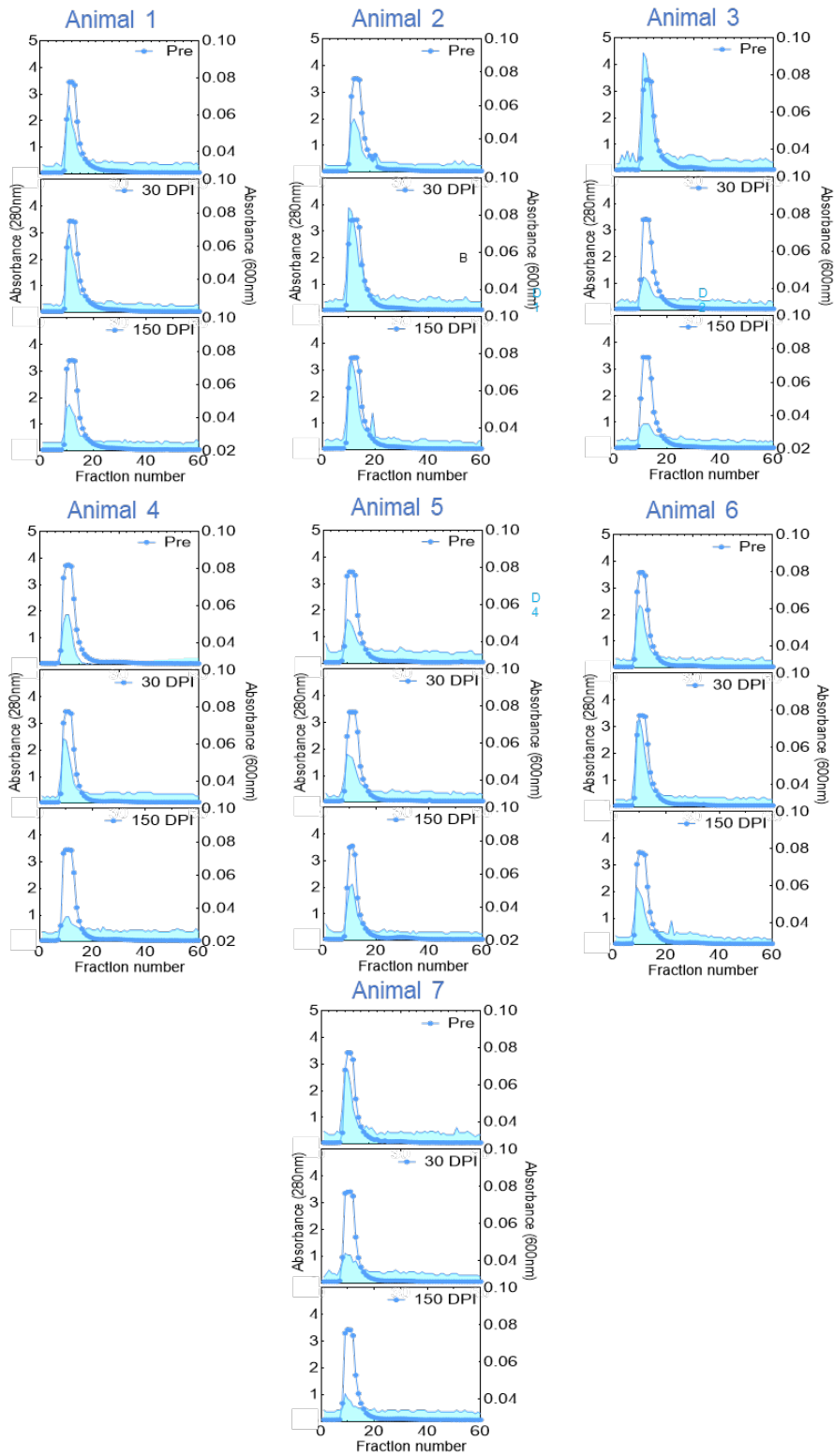


Figure S2: UV-Vis absorbance profile for individual THC/SIV group.

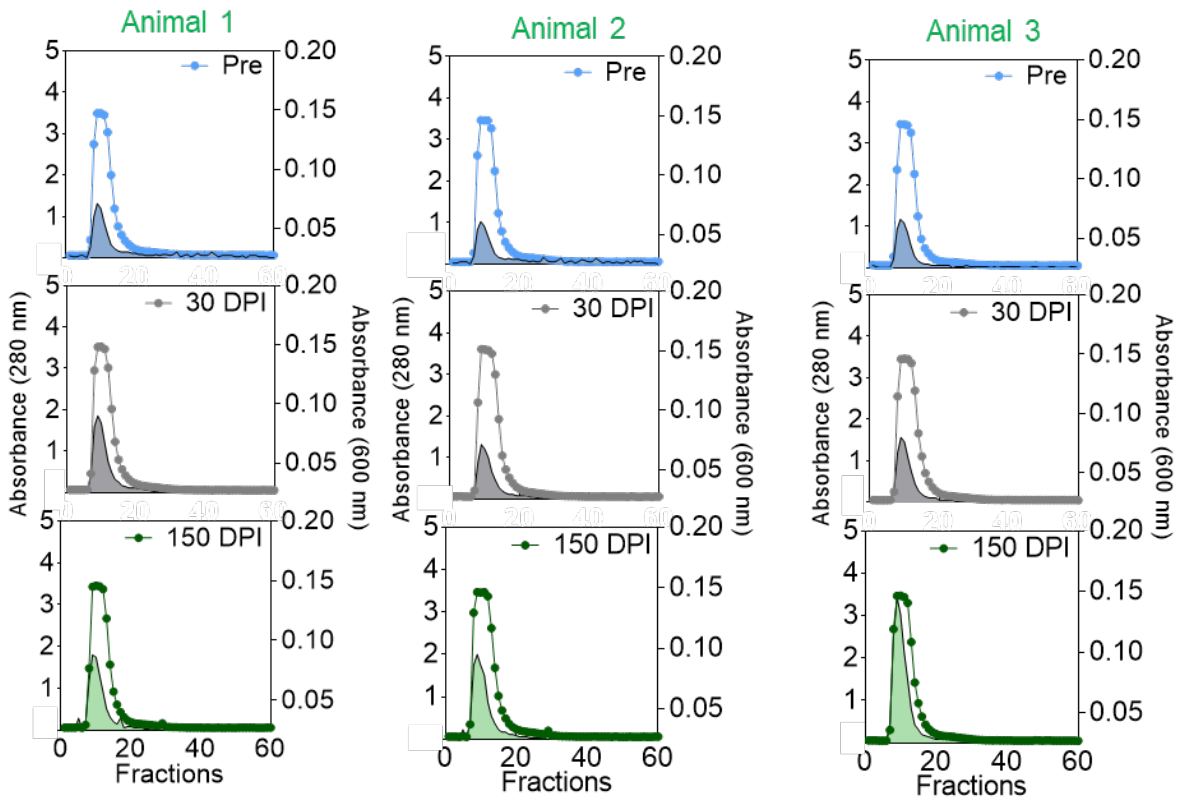


Figure S3: UV-Vis absorbance profile for individual THC only group.

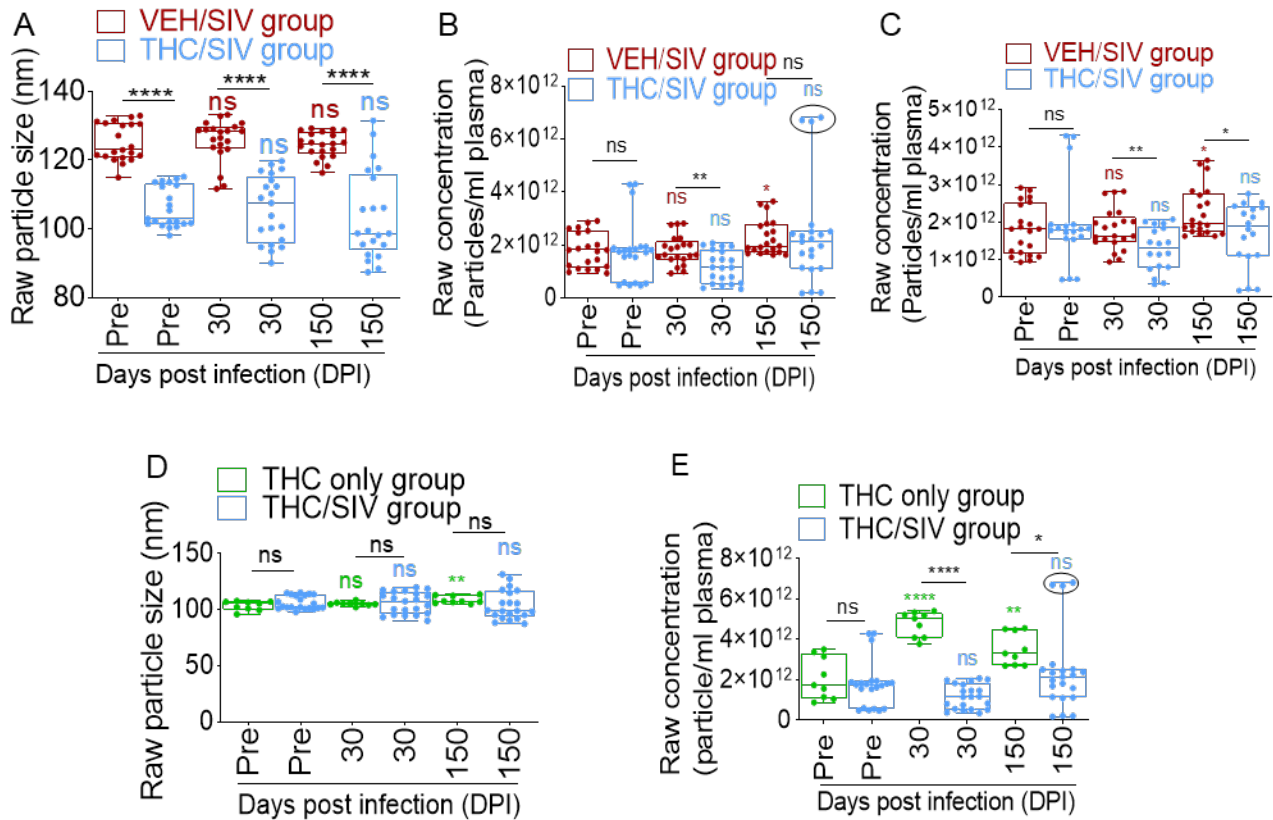


Figure S4: Raw NTA data analysis of BEVs: (A) Size and (B) concentration comparison between SIV group and SIV-THC group. (C) Concentration comparison without the outlier RM. (D) Size and (E) concentration comparison between THC group and THC/SIV group. Ordinary one-way ANOVA (Brown-Forsythe and Bartlett's tests, with Sidak's multiple comparisons test) was used to determine the statistical significance within the group. Binary Student's t-tests (Welch's correction) was used between groups for each of the time points in each group. \*\*\*\*  $p < 0.0001$ , \*\*\*  $p < 0.0005$ , \*\*  $p < 0.01$ , \*  $p < 0.05$ , ns non-significant.

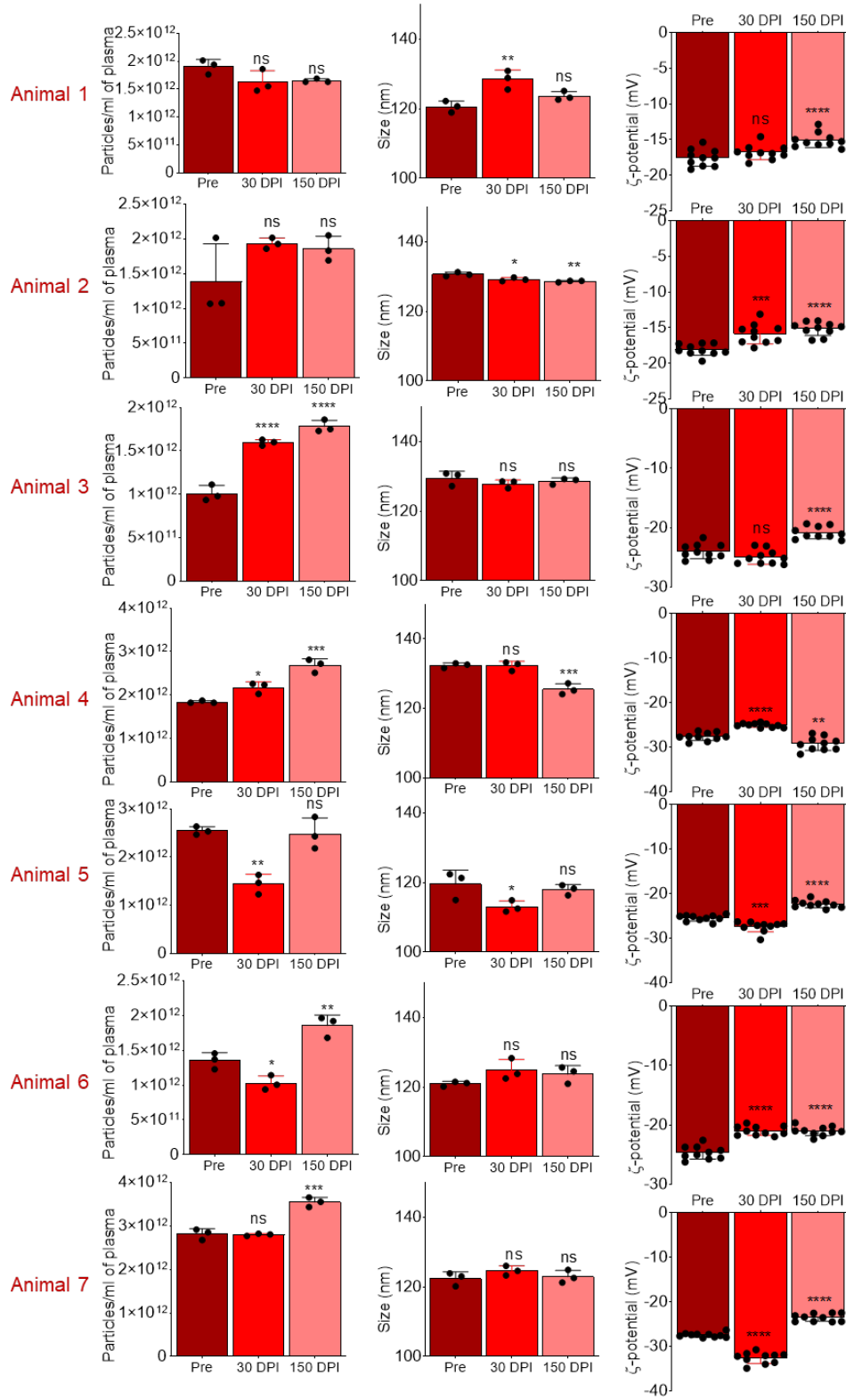


Figure S5: Raw NTA analysis of each individual RM for VEH/SIV group.

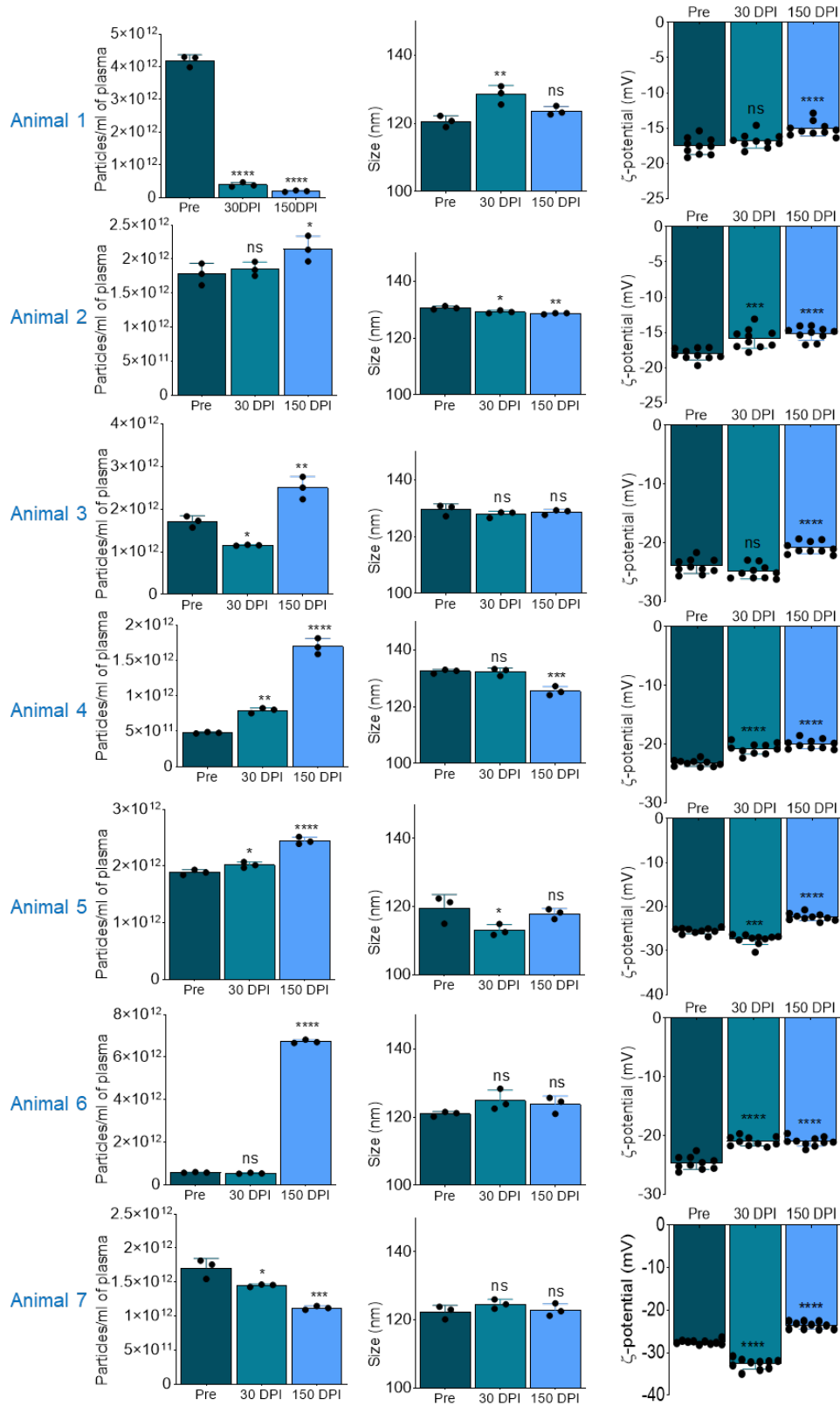


Figure S6: Raw NTA analysis of each individual RM for THC/SIV group.

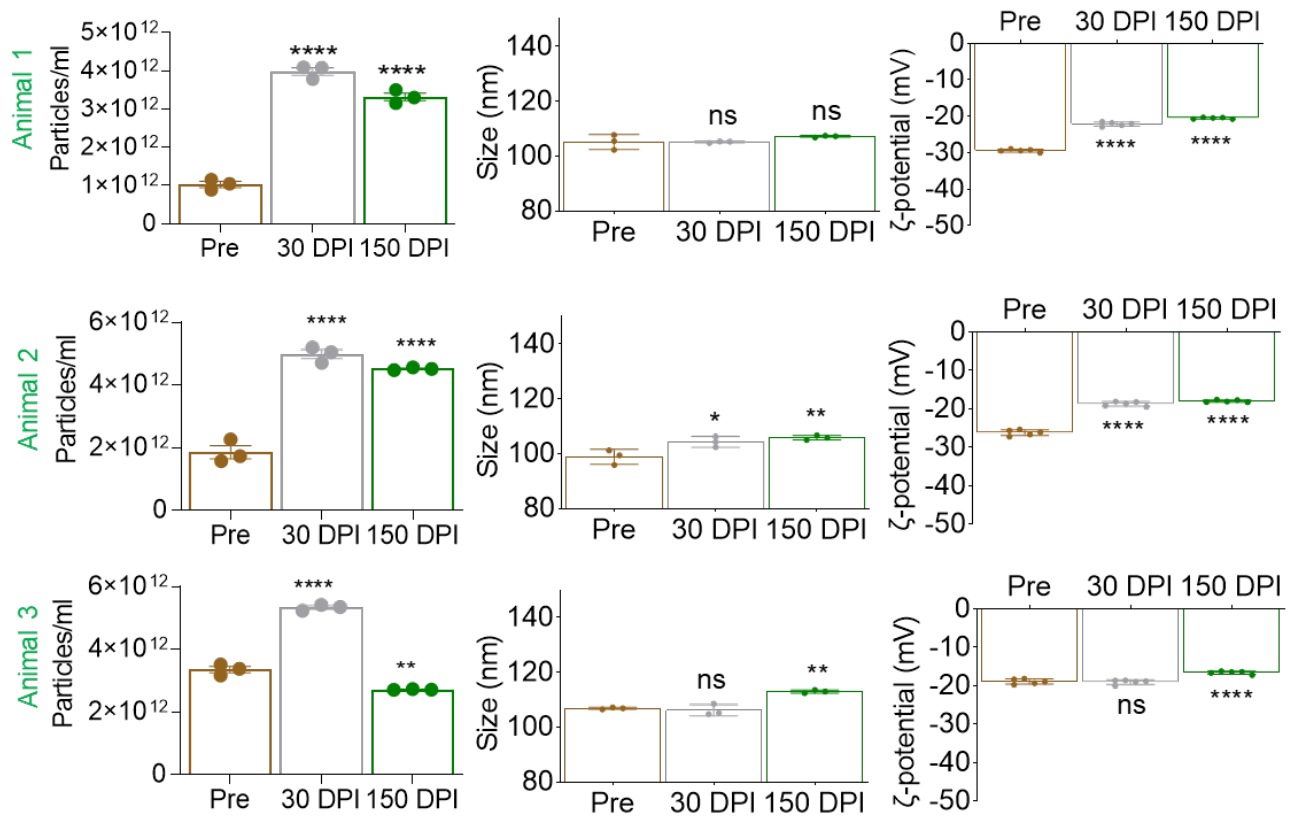


Figure S7: Raw NTA analysis of each individual RM for THC only group.

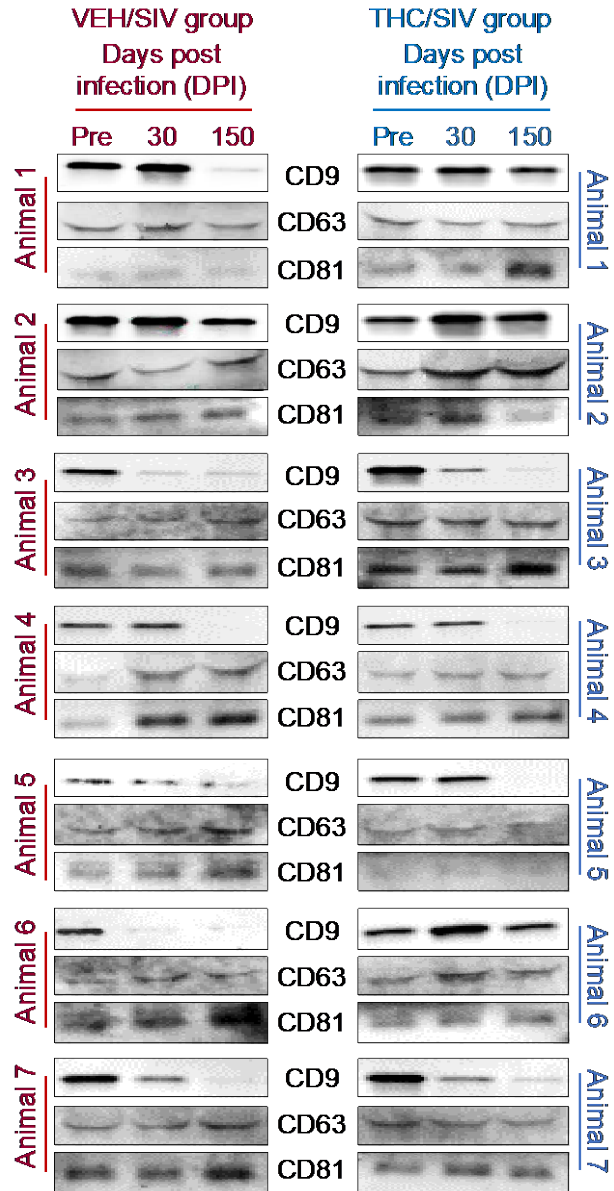


Figure S8. Tetraspanin WB of each individual RM for VEH/SIV and THC/SIV group.