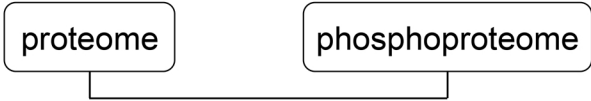


Gastric cancer samples tumor v.s. para-tumor

45 samples
5 batches



4 pairs



Protein extraction
Trypsin digestion

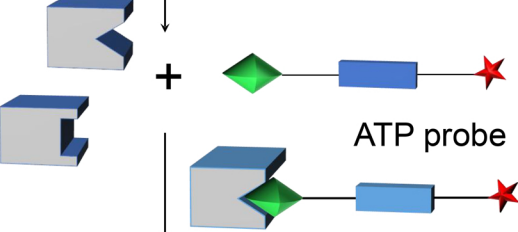


Protein extraction

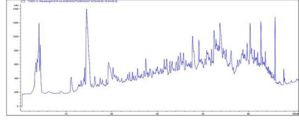


Buffer exchange

TMT labeling

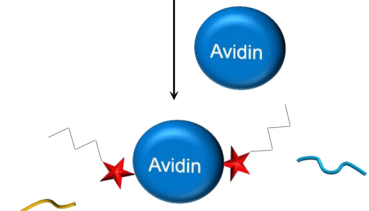


Combine and fractionate by bRP



TiO₂ beads

pS/T/Y peptides



LC-MS phosphoproteome

Chemical cleavage

