

Supplementary Appendix

This appendix has been provided by the authors to give readers additional information about their work. Supplement to: Pan-cancer analysis identifies the IRF family as a biomarker for survival prognosis and immunotherapy

Pan-cancer analysis identifies the IRF family as a biomarker for survival prognosis and immunotherapy

Supplemental Materials

Table of Contents

Figure S1 Flowchart of this work.

Figure S2 Expression and survival profiles of IRFs in pan-cancer.

Figure S3 Single nucleotide variation (SNV) frequency, CNV and methylation of IRFs.

Figure S4 Survival and clinical analysis of IRF-score in pan-cancer.

Figure S5 Pathway and immuno-infiltration analysis of IRF scores in pan-cancer.

Figure S6 ssGSEA and Cibersort analysis of IRF scores in pan-cancer.

Figure S7 Correlation between IRFscore and drug sensitivity and TMB.

Figure S8 Correlation between IRF-score and immune checkpoints and tumour stem cells.

Figure S1

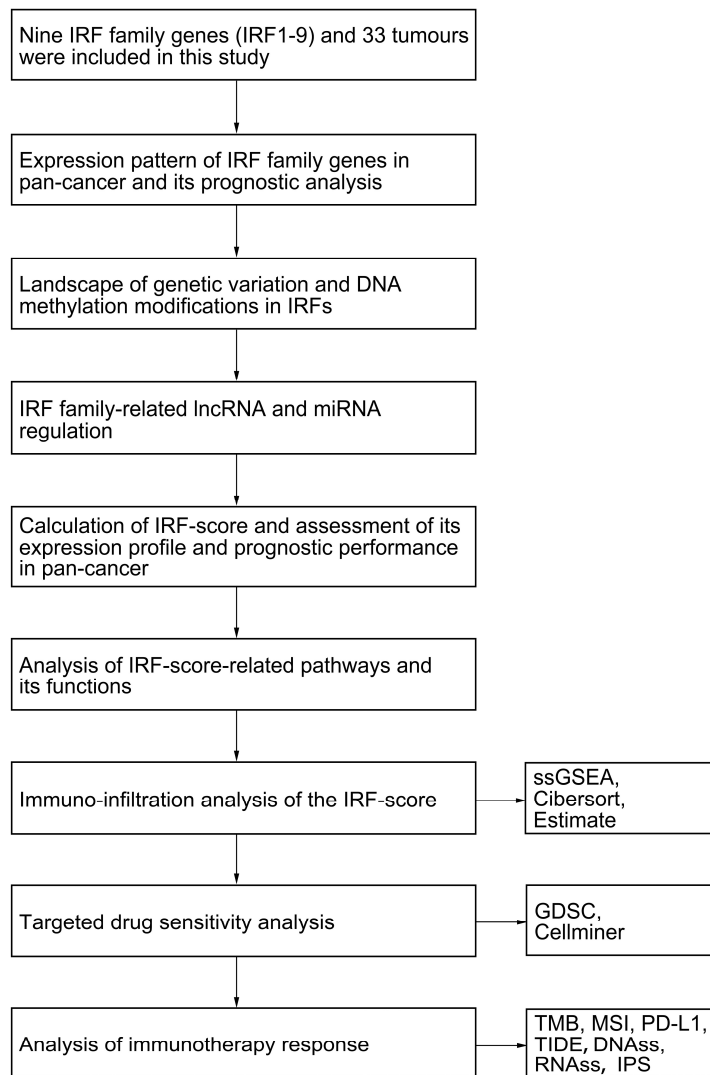


Figure S1 Flowchart of this work.

Figure S2

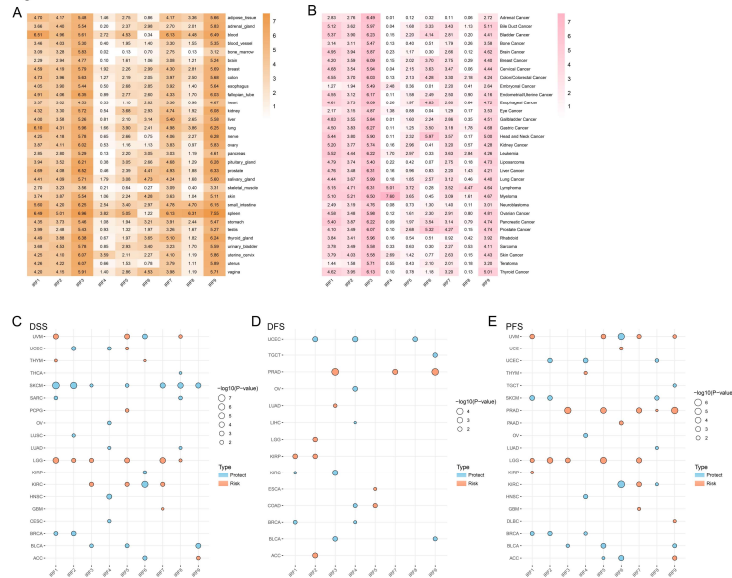


Figure S2 Expression and survival profiles of IRFs in pan-cancer. **A-B.** Heat map of IRF family gene expression signatures in GTEx (**A**) and CCLE (**B**) dataset. **C-E.** Survival analysis of IRF, including disease-specific survival (**C**), disease free survival (**D**) and progression free survival (**E**).

Figure S4

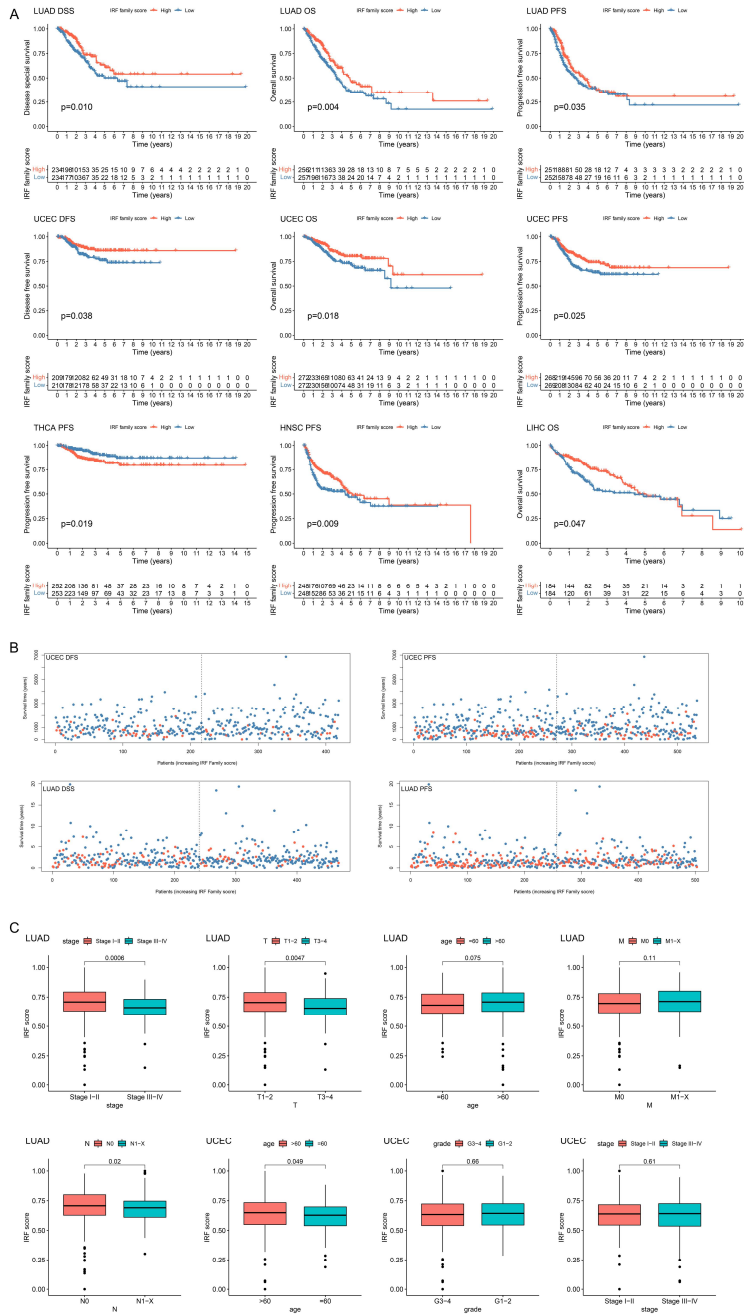


Figure S4 Survival and clinical analysis of IRF-score in pan-cancer. **A.** Kaplan-Meier analysis of survival differences in IRF-score in pan-cancer. **B.** Scatter plot of the distribution of DSS, DFS and PFS with IRF score in LUAD and UCEC patients. **C.** Boxplots of IRF-score between different characteristics in pan-cancer patients, including patient age, stage, grade, T and M.

Figure S6

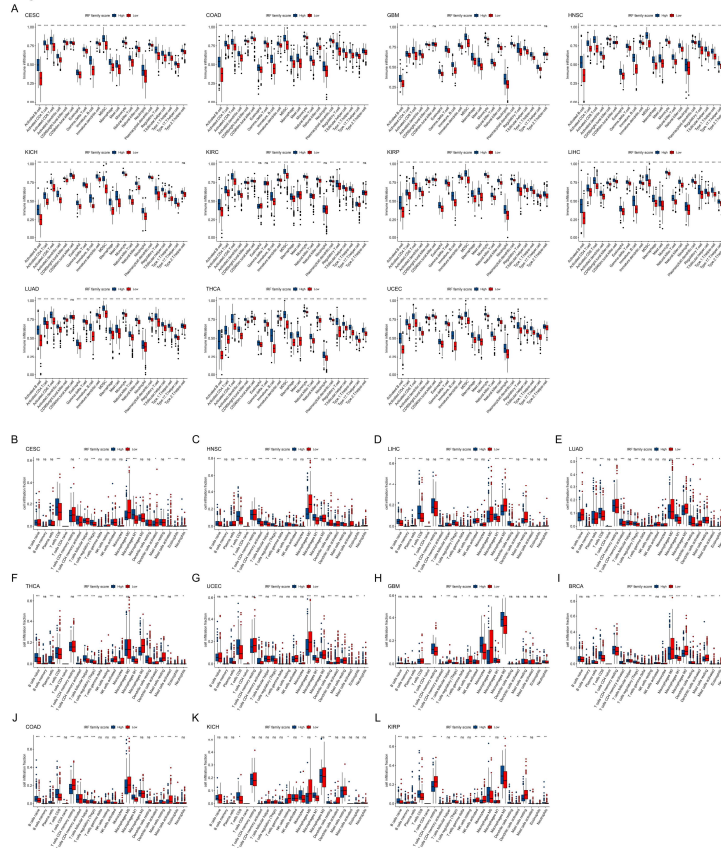


Figure S6 ssGSEA and Cibersort analysis of IRF scores in pan-cancer. **A.** Infiltration abundance of each immune cell in two IRF scoring groups in pan-cancer(ssGSEA). **B-L.** Ratio of infiltration of each immune cell in both IRF scoring groups in pan-cancer (Cibersort).

