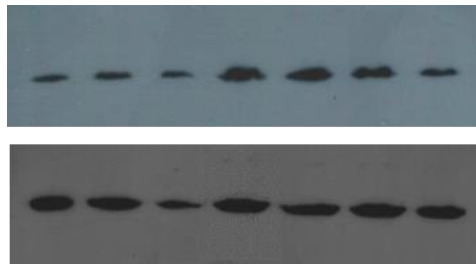
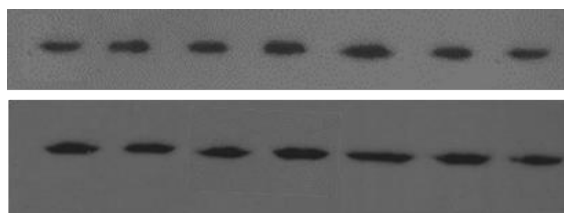


CB1 Western Blott

	Sample	Sample-blank	b-actin	b-actin-blanck	Result	% RD
Blanck	180,11	5,74	159,13	15,34	0,3742	87,24
SRD+CA 246	185,85		174,47			
Blanck	180,11	8,23	159,13	19,14	0,4300	100,25
SRD+CA 247	188,34		178,27			
Blanck	180,11	4,44	159,13	8,7	0,5103	118,99
SRD 238	184,55		167,83			
Blanck	180,11	11,25	159,13	26,23	0,4289	100,00
RD 236	191,36		185,36			
Blanck	180,11	10,47	159,13	19,13	0,5473	127,61
SRD 239	190,58		178,26			
Blanck	180,11	9,5	159,13	21,01	0,4522	105,42
SRD 249	189,61		180,14			
Blanck	180,11	8,72	159,13	19,09	0,4568	106,50
SRD+CA 252	188,83		178,22			



	Sample	Sample-blank	b-actin	b-actin-blanck	Result	% RD
Blanck	136,81	28,46	156,39	22,63	1,2576	91,83
SRD+CA 253	165,27		179,02			
Blanck	136,81	31,86	156,39	20,15	1,5811	115,46
SRD+CA 254	168,67		176,54			
Blanck	136,81	32,1	156,39	21,15	1,5177	110,83
SRD 250	168,91		177,54			
Blanck	136,81	36,25	156,39	26,47	1,3695	100,00
RD 242	173,06		182,86			
Blanck	136,81	39,11	156,39	24,98	1,5657	114,33
SRD 249	175,92		181,37			
Blanck	136,81	29,06	156,39	21,78	1,3343	97,43
SRD 238	165,87		178,17			
Blanck	136,81	27,8	156,39	20,84	1,3340	97,41
SRD+CA 248	164,61		177,23			



	Sample	Sample-blank	b-actin	b-actin-blank	Result	% RD
Blanck	111,84	40,7	117,67	18,15	2,2424	166,92
DRS 240	152,54		135,82			
Blanck	143,79	13,49	117,67	5,99	2,2521	167,64
DRS 251	157,28		123,66			
Blanck	143,79	8,85	117,67	8	1,1063	82,35
DRS+CA 254	152,64		125,67			
Blanck	143,79	18,27	114,69	13,6	1,3434	100,00
DR 237	162,06		128,29			
Blanck	143,79	17,44	117,67	10,65	1,6376	121,90
DRS 250	161,23		128,32			
Blanck	143,79	10,56				
DRS+CA 247	154,35					
Blanck	140,9	5,35	117,67	3,99	1,3409	99,81
DRS+CA 252	146,25		121,66			

