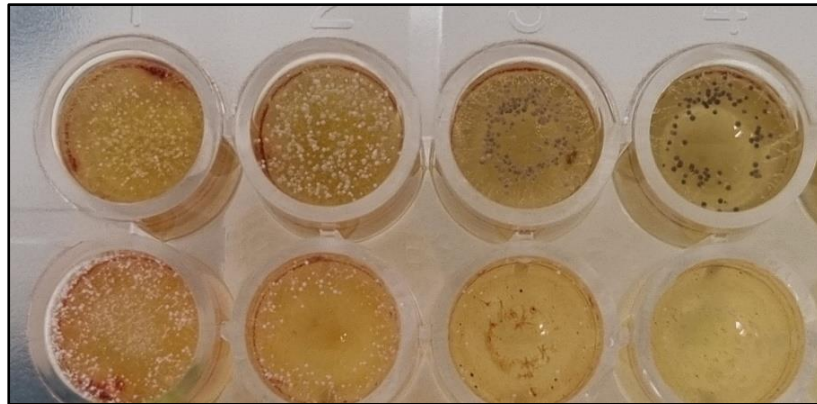
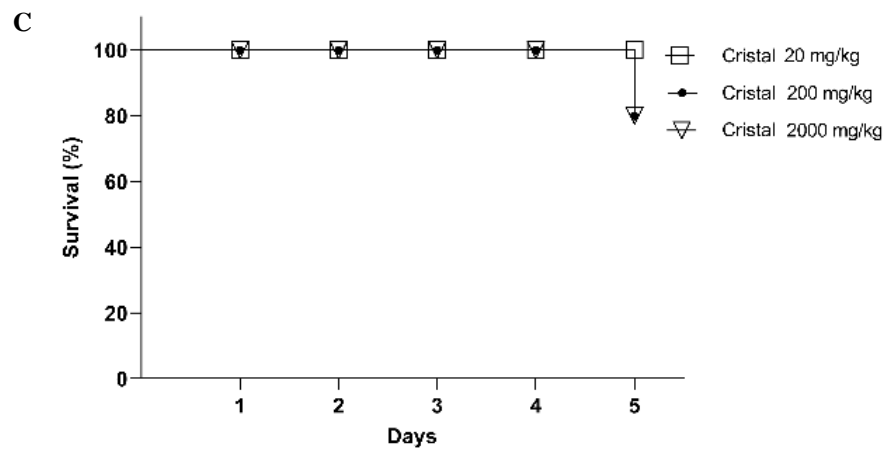
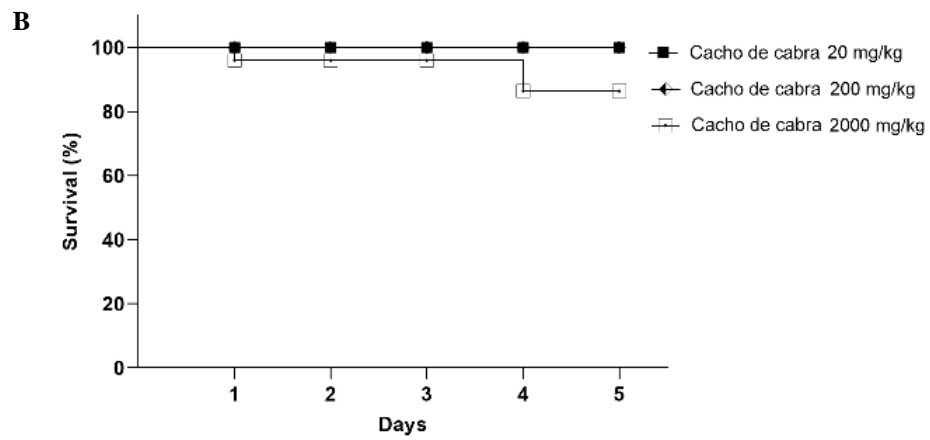
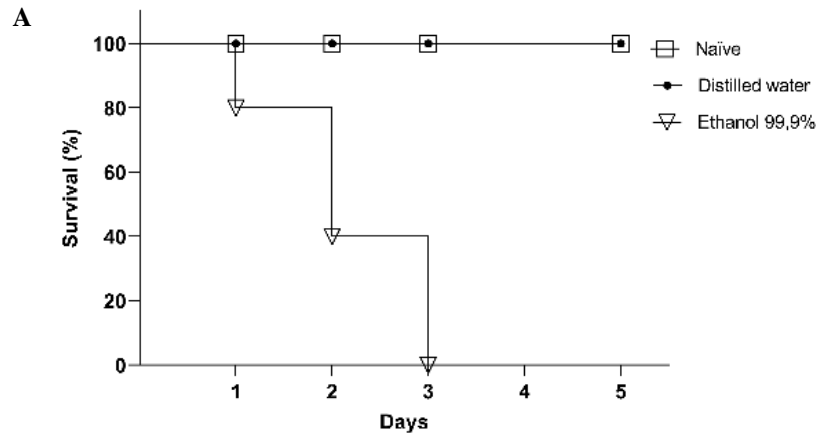


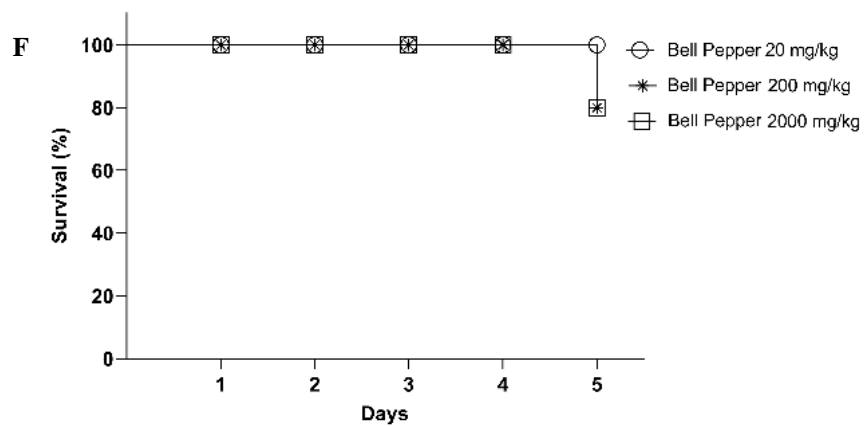
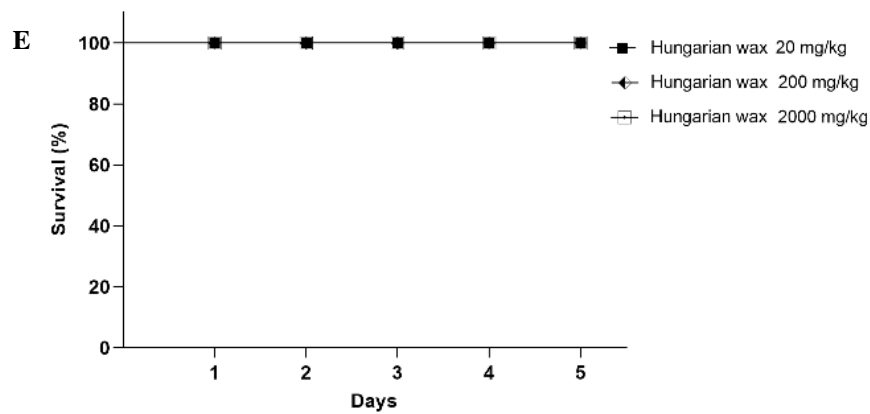
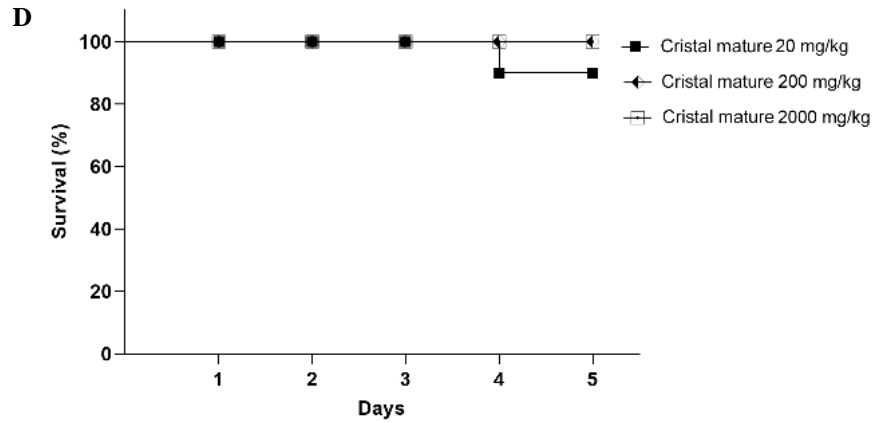
## *Supplementary Material*

### 1. Supplementary Figures



**Supplementary Figure 1.** *Aspergillus niger* MUM05.11 (upper part) from left to right; treatment with CAP at 250 ug/mL, 125 ug/mL and 60 ug/mL respectively and control (only RPMI 1640 medium).





**Supplementary Figure 2.** Kaplan-Meier survival curve of *Galleria mellonella* larvae injected with aqueous extracts of *Capsicum annuum* and *C. baccatum* varieties. (A) control; (B) treatments with aqueous extract of *C. annuum* Cacho de Cabra; (C) treatments with aqueous extract of *C. baccatum* Cristal; (D) treatments with aqueous extract of mature Cristal; (E) treatments with aqueous extract of *C. annuum* Hungarian Wax; (F) treatments with aqueous extract of *C. annuum* Bell pepper.

