

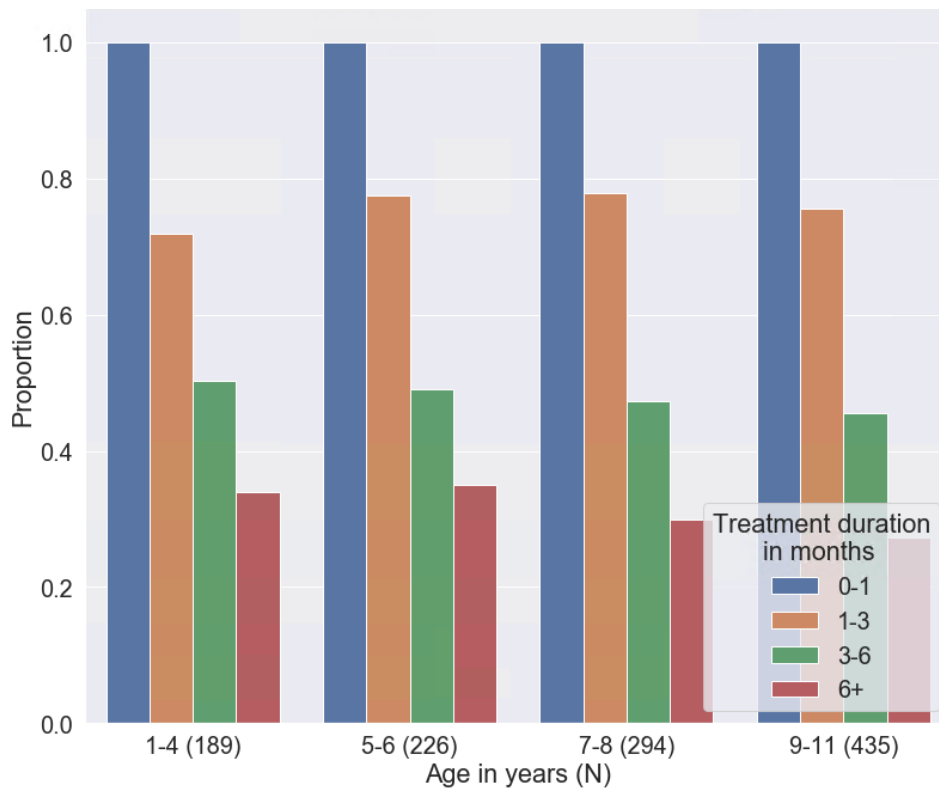
**Supplementary:**

**Table S1 – distributions of 10-gram oil bottles in the first medical cannabis treatment dispensed per indication, divided into products.**

<b>T%C%</b>	<b>Autism</b>	<b>Epilepsy</b>	<b>Tourette</b>	<b>Pediatric cancer</b>
T1C28	98	40	11	1
T0C24	39	35	9	3
T1C20	636	284	131	11
T3C15	202	15	22	25
T10C10	33	4	8	7
T5C10	9	2	3	3
T5C5	31	1	47	1
T20C4	16	2	4	28
T15C3	11	1	8	12
T10C2	14	2	7	38

**Each row presents the components' concentrations (w/w%).** T% is the concentration of THC in the preparation, and C% is the concentration of CBD in the preparation. The order of appearance was determined by the prevalence of THC concentration in the products.

**Figure S1 – Persistence rate in 6 months of treatment by age groups**



**Figures S2-S4: Amounts and THC:CBD ratios in the first 6 months in epilepsy, Tourette syndrome, and oncology.**

In the following figures, Black boxes indicate treatment discontinuation, dark green marks increased amount or THC:CBD ratio compared to the previous month, orange marks indicate a decreased amount or THC:CBD ratio compared to the previous month, and light green marks indicate no change in amounts or THC:CBD ratio compared to the previous month.

Figure S2a: Amount in the first 6 months of therapy in the epileptic population

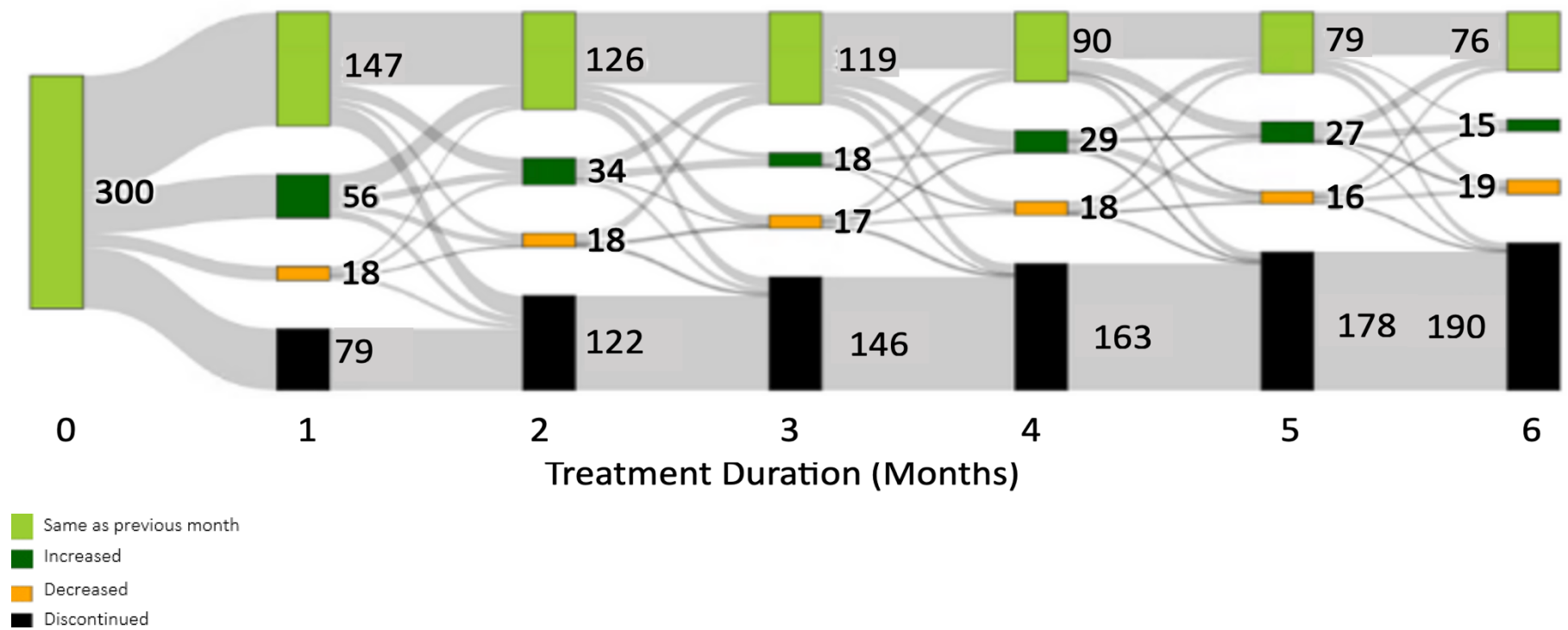
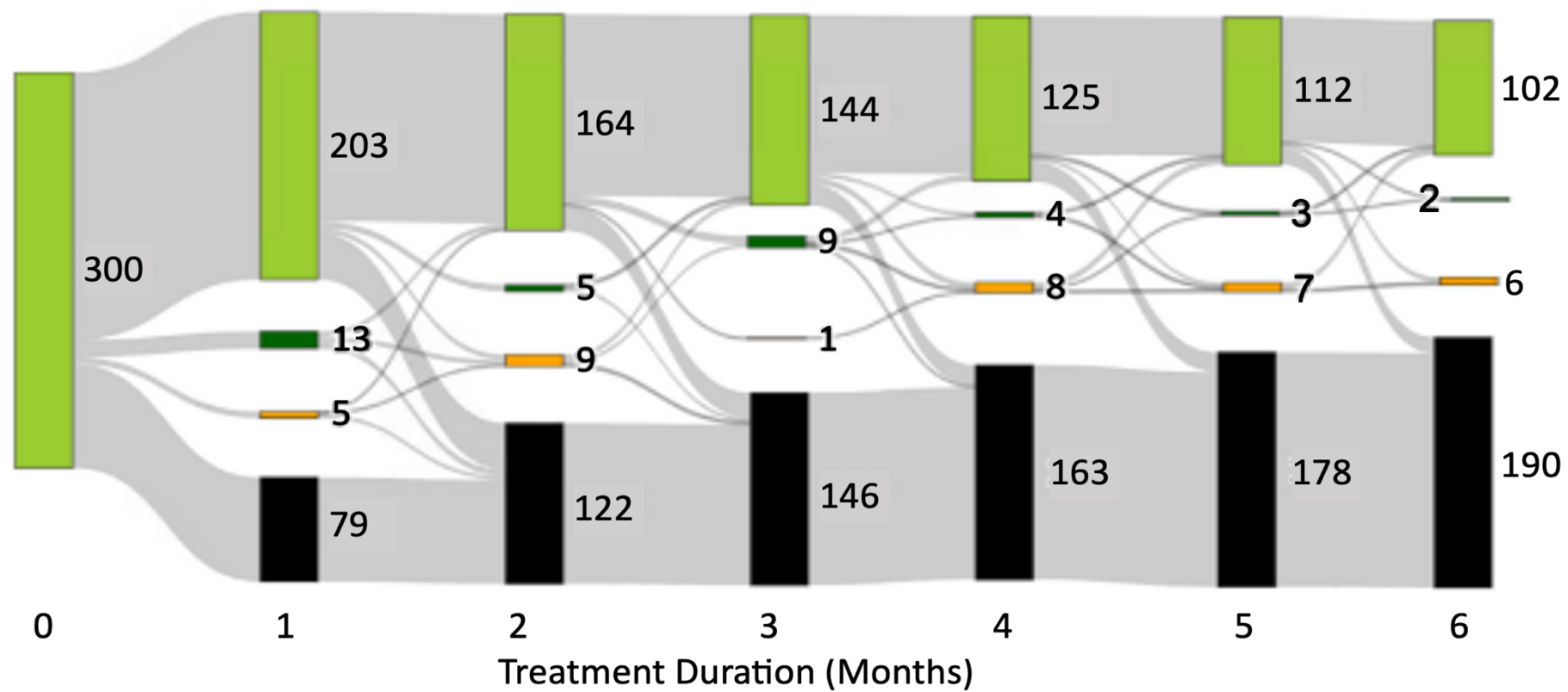
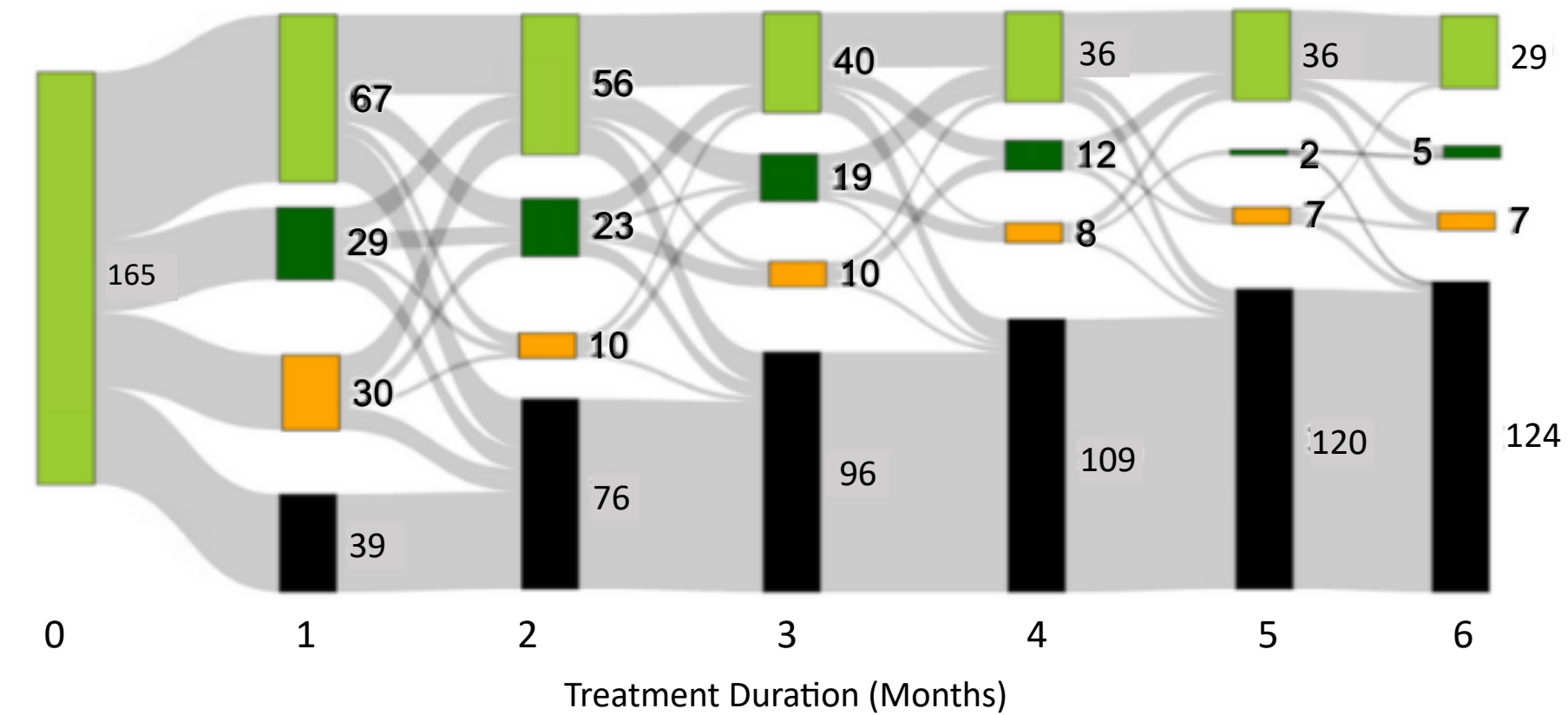


Figure S2b: THC:CBD ratio in the first 6 months of therapy in the epileptic population



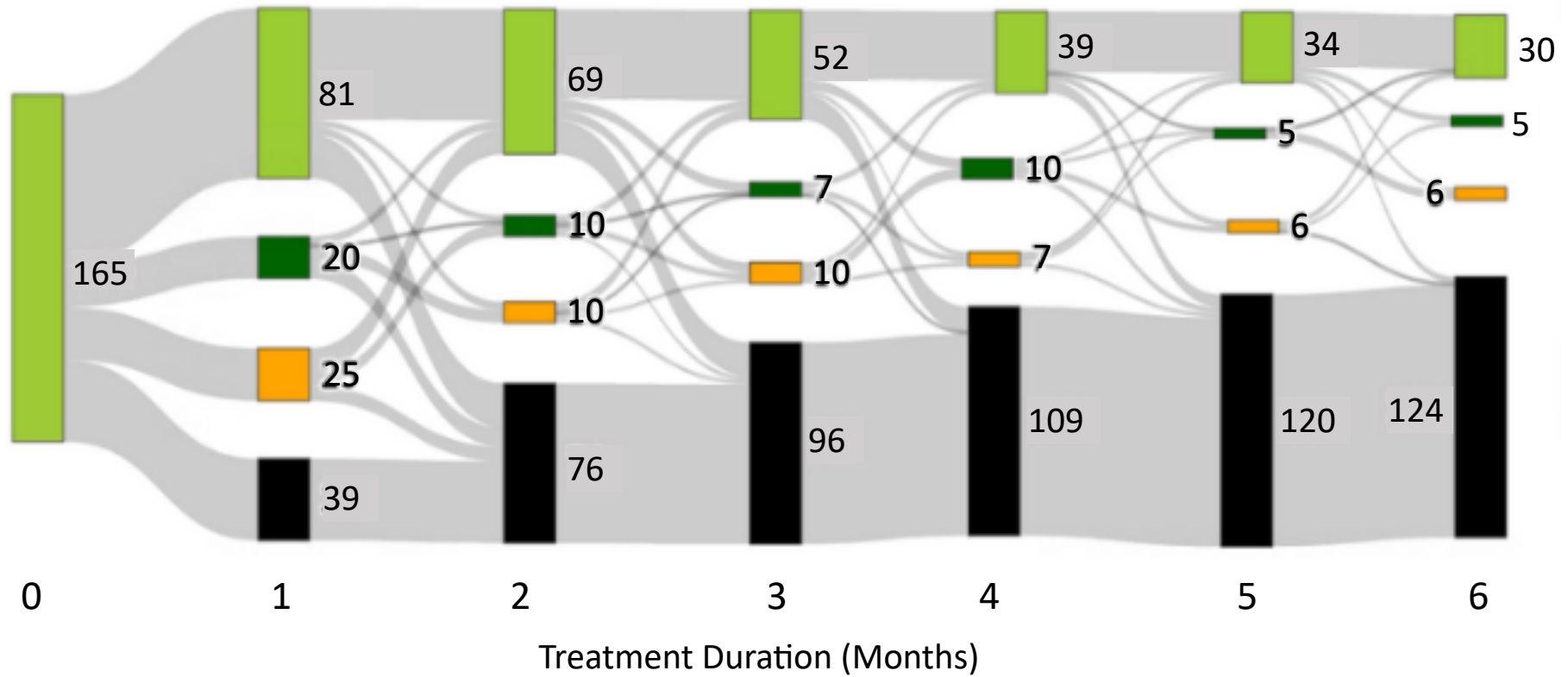
- Same as previous month
- Increased
- Decreased
- Discontinued

Figure S3a: Amount in the first 6 months of therapy in the Tourette population



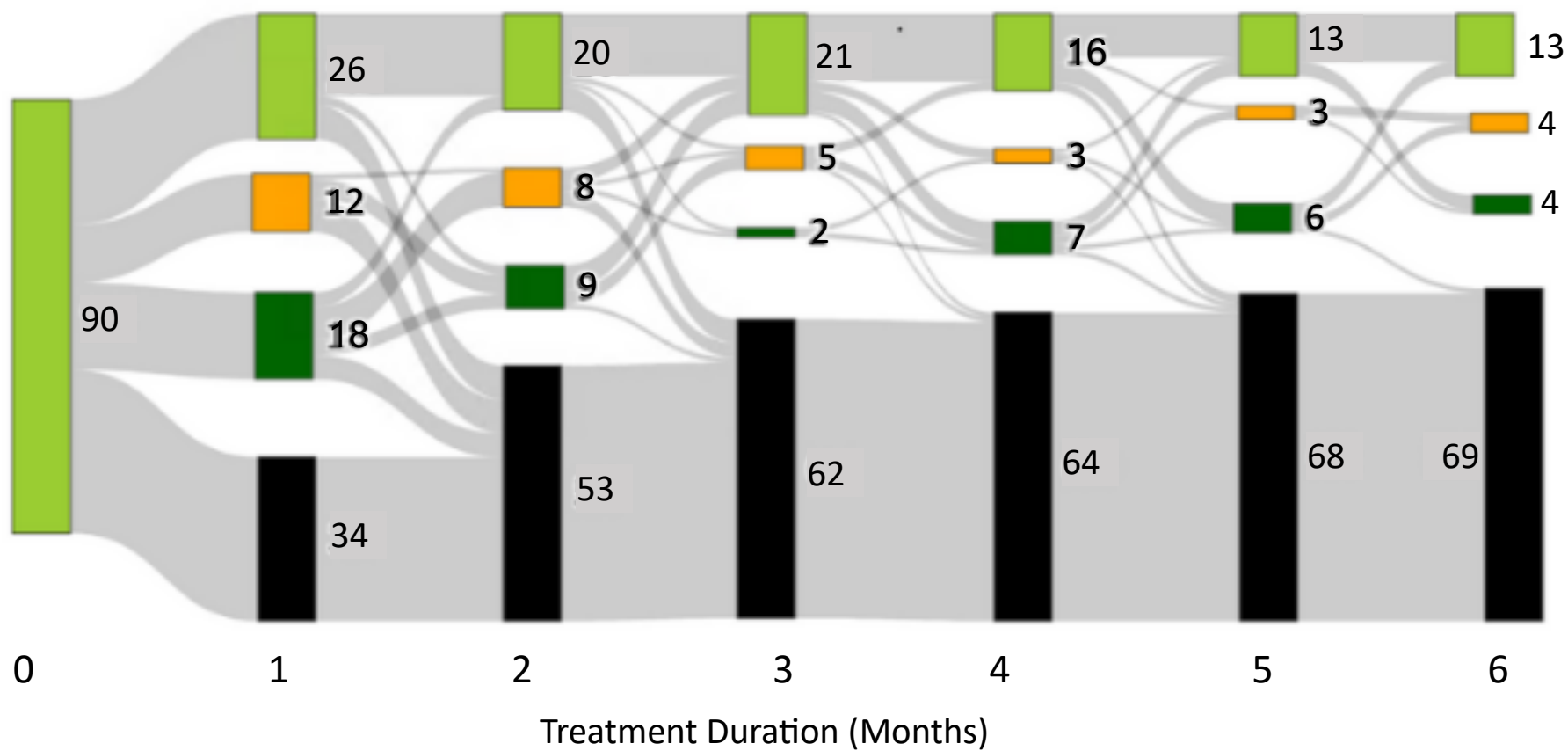
- Same as previous month
- Increased
- Decreased
- Discontinued

Figure S3b: THC:CBD ratio in the first 6 months of therapy in the Tourette population



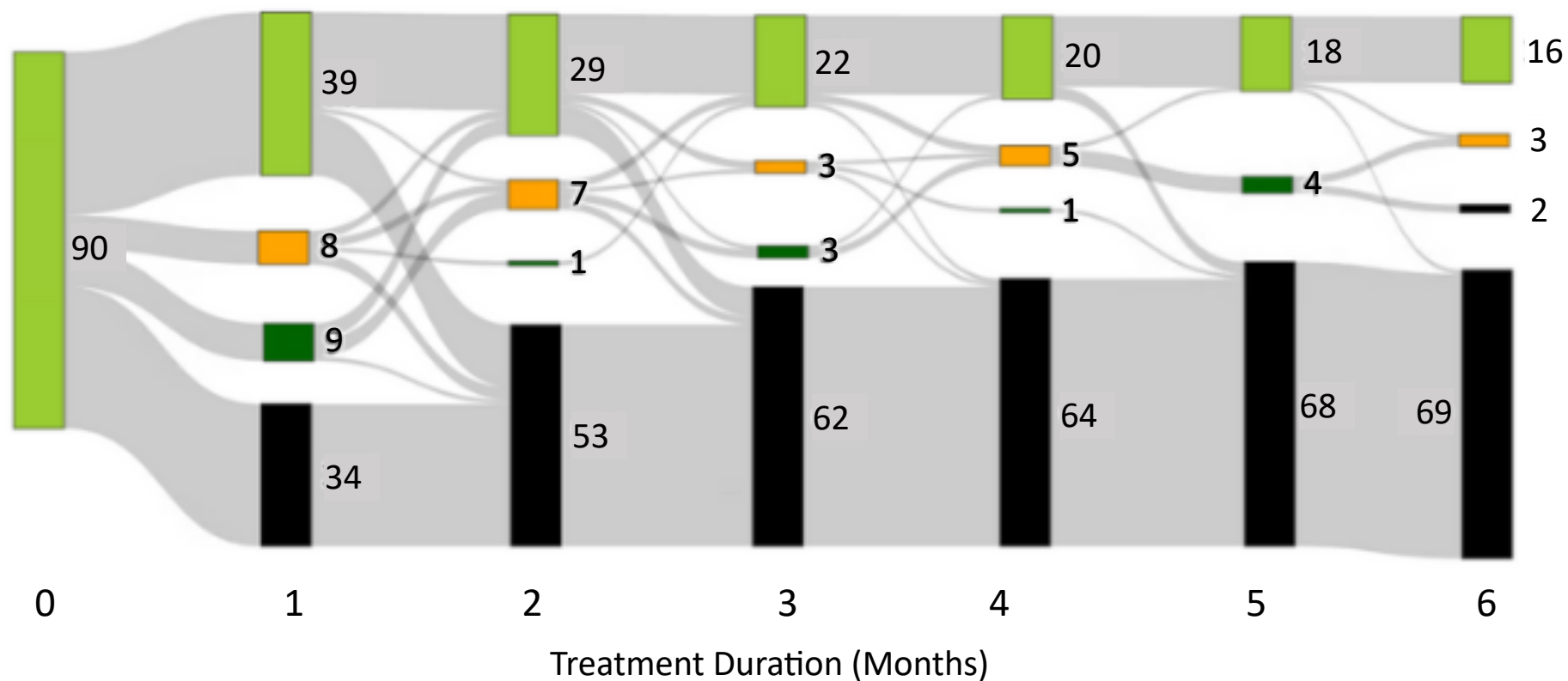
- Same as previous month
- Increased
- Decreased
- Discontinued

Figure S4a: Amount in the first 6 months of therapy in the oncology population



- Same as previous month
- Increased
- Decreased
- Discontinued

Figure S4b: THC:CBD ratio in the first 6 months of therapy in the oncology population



- Same as previous month
- Increased
- Decreased
- Discontinued

Figure S5: Mean THC:CBD ratio during treatment by age in the ASD pediatric population in the first 12 months of treatment

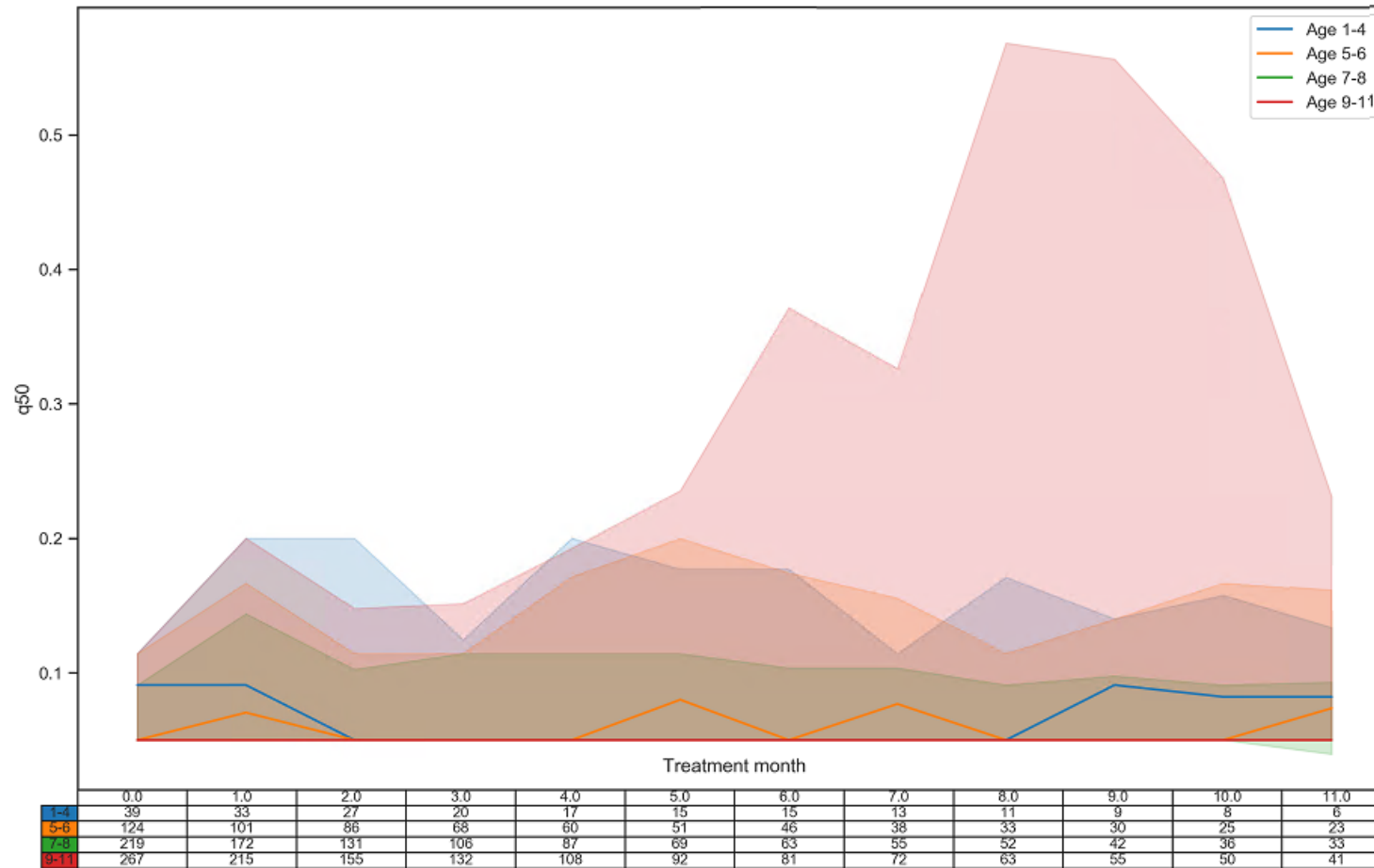


Figure S5: Mean THC:CBD ratio with the group size that continued treatment. The shaded area under the curve is the standard deviation. Approximately 50% of the subjects have the same THC:CBD ratio.