

## Supplemental files

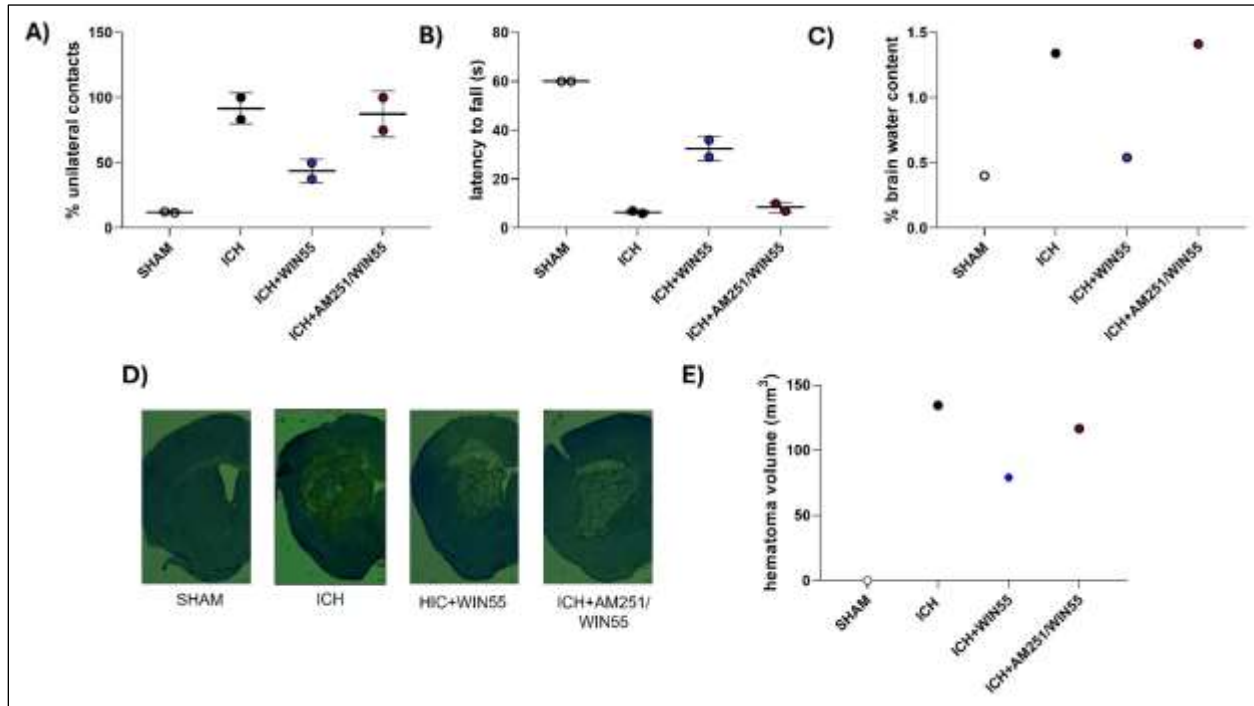
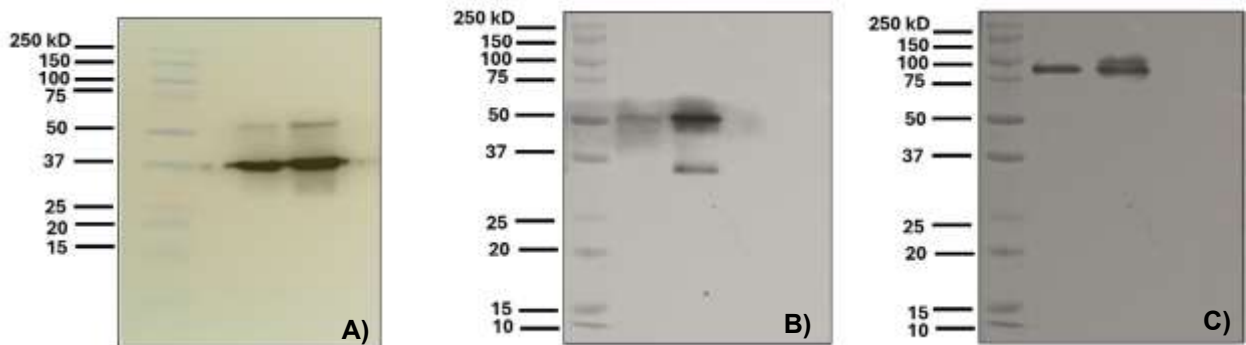
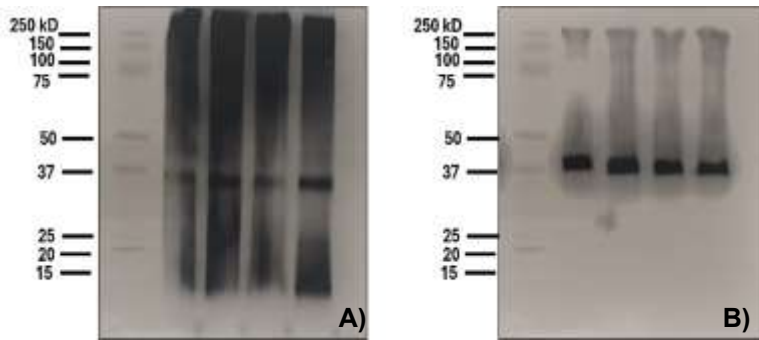


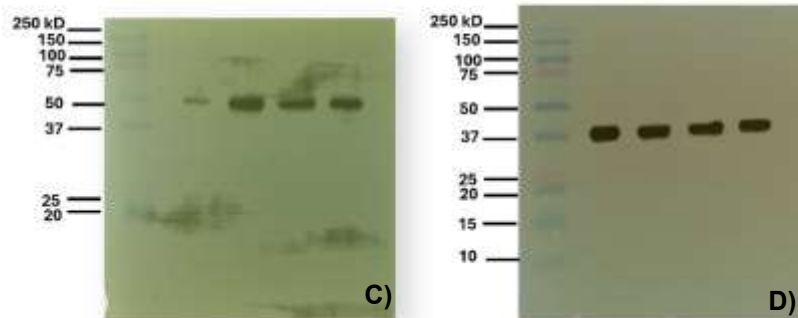
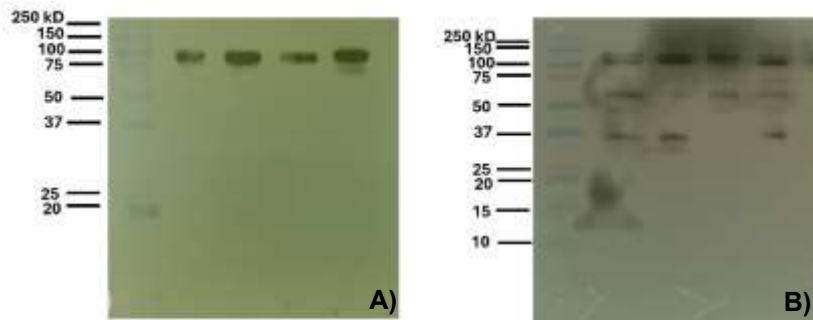
Figure 1. Motor activity recovery in animals after ICH and treated with WIN55 or AM251/WIN55. A Cylinder test. B Inverted grid test. C Brain water content in animals after ICH and treated with WIN55 or AM251/WIN55. Hematoma volume in animals after ICH and treated with WIN55 or AM251/WIN55 D Representative micrographs of coronal striatal sections stained with cresyl violet. The scale bars represent 200  $\mu\text{m}$ . E Quantifying the hematoma volume is expressed in cubic millimeters.



Full unedited blot for Figure 1. A) CB1 and GAPDH cytosolic fraction. B) CB1 membrane fraction. C) Na<sup>+</sup>/K<sup>+</sup>-ATPase  $\alpha$ 1 membrane fraction

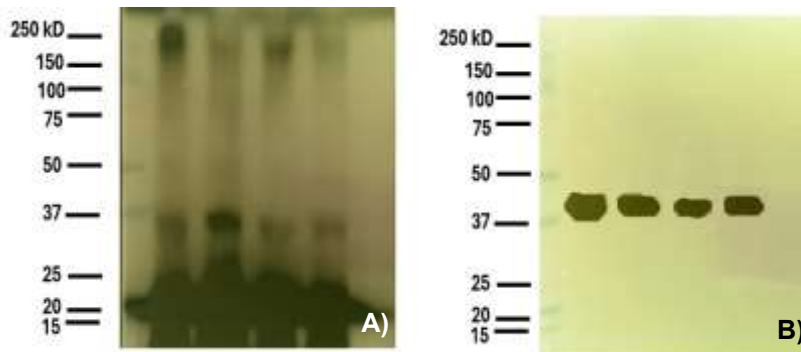


Full unedited blot for Figure 4. A ) AQP4 B) GAPDH



Full unedited blot for Figure 5. A ) gp91phox B) NLRP3  
C) caspase 1 D) GAPDH

D)



Full unedited blot for Figure 9. A ) AQP4 B) GAPDH