



Supporting Information

Table of Contents		Page
FIGURE S1	Cytotoxic effects of methanol extract of <i>O. hispidus</i> and doxorubicin on the tested cell lines	2
FIGURE S2	Cytotoxic effects of <i>O. hispidus</i> sub-extracts and doxorubicin on the tested cell lines	3
FIGURE S3	Cytotoxic effects of fractions obtained from n-hexane sub-extract of <i>O. hispidus</i> and doxorubicin on the tested cell lines	4
FIGURE S4	Cytotoxic effects of fractions obtained from dichloromethane subextract of <i>O. hispidus</i> and doxorubicin on the tested cell lines	5
FIGURE S5	Cytotoxic effects of compounds isolated from active fractions of <i>O. hispidus</i> and doxorubicin on tested cell lines	6
FIGURE S6	Chemical structure and key ^1H - ^1H COSY () ve HMBC (H  C) correlations for compound 3	7
FIGURE S7	HR-ESI-MS Spectrum of compound 3 (negative mode)	7
FIGURE S8	^1H NMR spectrum of compound 3 (in CD_3OD , ^1H :500 MHz).	8
FIGURE S9	^{13}C NMR spectrum of compound 3 (in CD_3OD , ^{13}C : 125 MHz).	9
FIGURE S10	HMQC spectrum of compound 3 .	10
FIGURE S11	COSY spectra of compound 3	11
FIGURE S12	HMBC spectra of compound 3	12
FIGURE S13	UV-Vis spectrum of compound 3	13
FIGURE S14	FTIR spectrum of compound 3	13

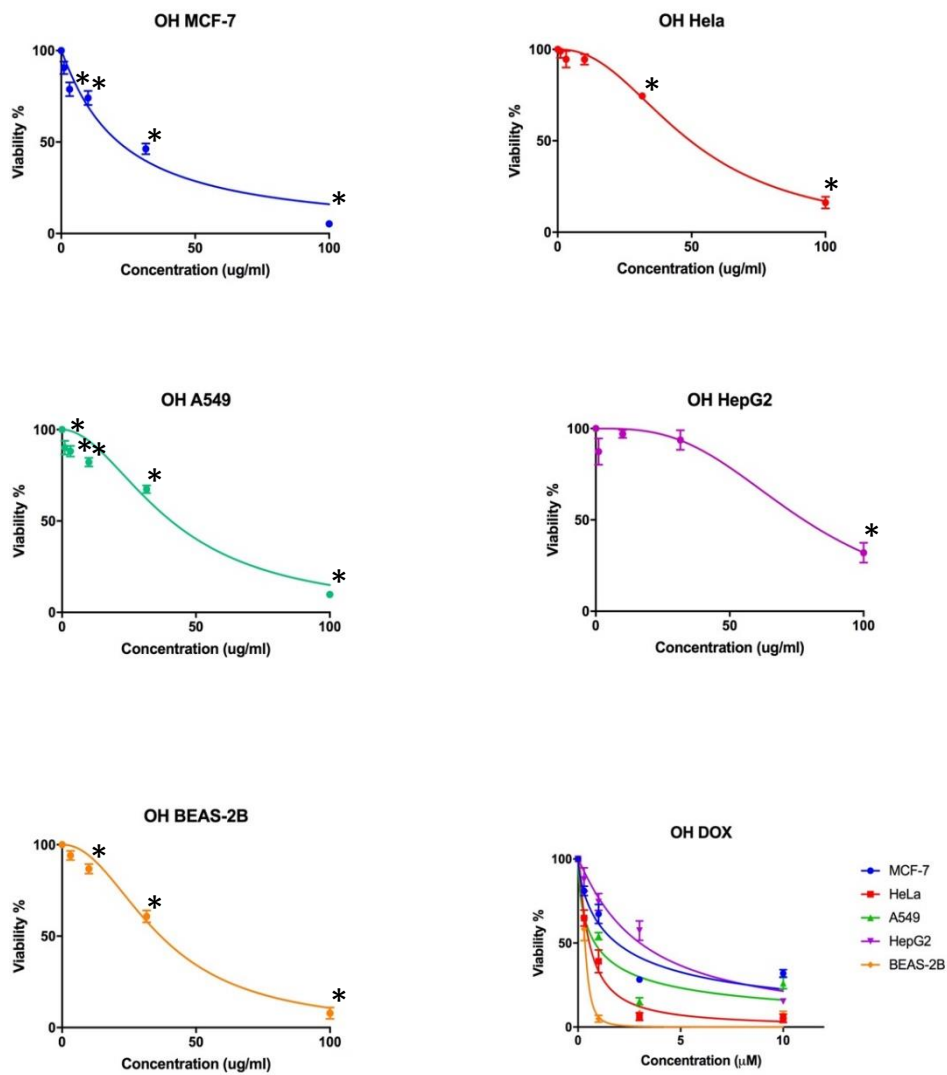


FIGURE S1 Cytotoxic effects of methanol extract of *O. hispidus* and doxorubicin on the tested cell lines (% mean cell viability \pm SEM) OH: *O. hispidus*; Dox: Doxorubicin; SEM: Standard Error of Mean; *: Statistically significant compared to control (One way-ANOVA)

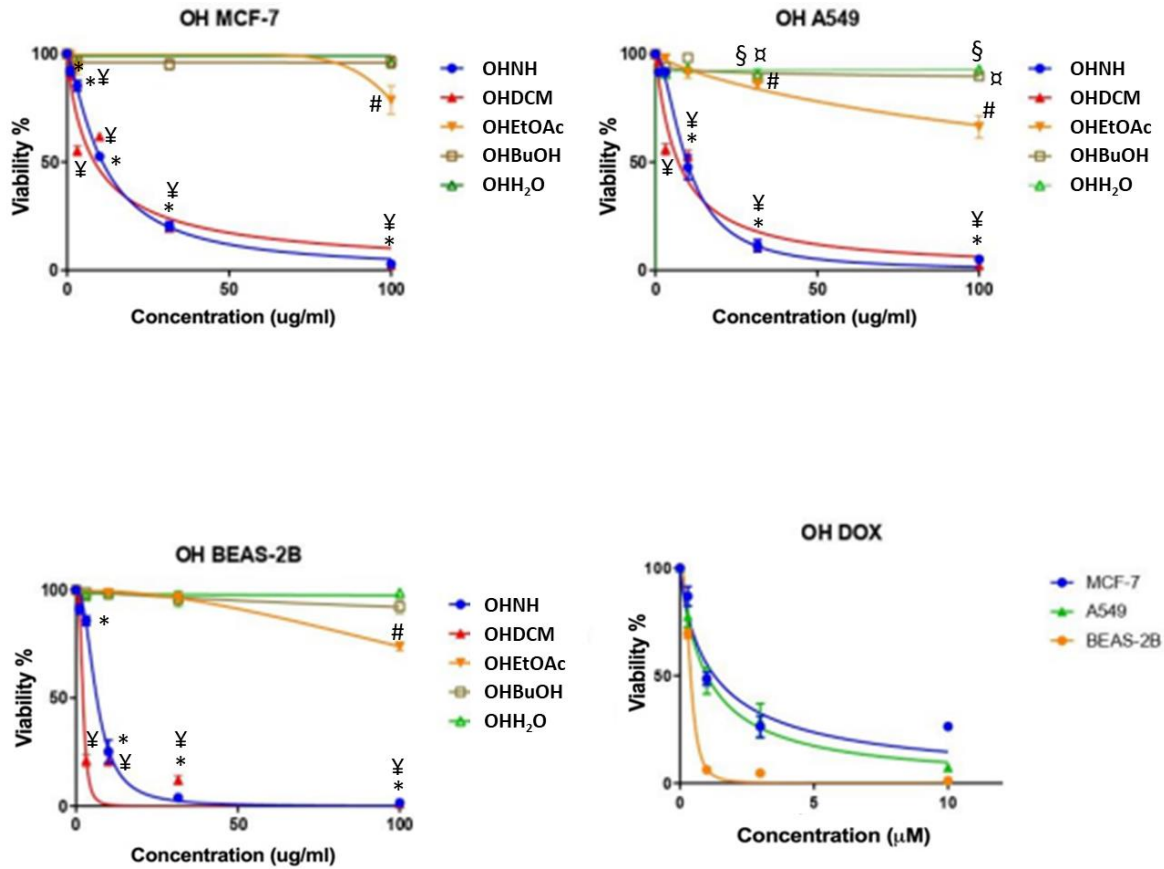


FIGURE S2 Cytotoxic effects of *O. hispidus* sub-extracts and doxorubicin on the tested cell lines (% mean cell viability \pm SEM) OH: *O. hispidus*; Dox: Doxorubicin; OHNH: n-hexane; OHDCM: dichloromethane; OHEtOAc: ethyl acetate; OHBuOH: n-butanol; OHH₂O: water; SEM: Standard Error of Mean; *: Statistically significant compared to control for OHNH (One way-ANOVA); †: Statistically significant compared to control for OHDCM (One way-ANOVA); #: Statistically significant compared to control for OHEtOAc (One way-ANOVA); ‡: Statistically significant compared to control for OHBuOH; §: Statistically significant compared to control for OHH₂O.

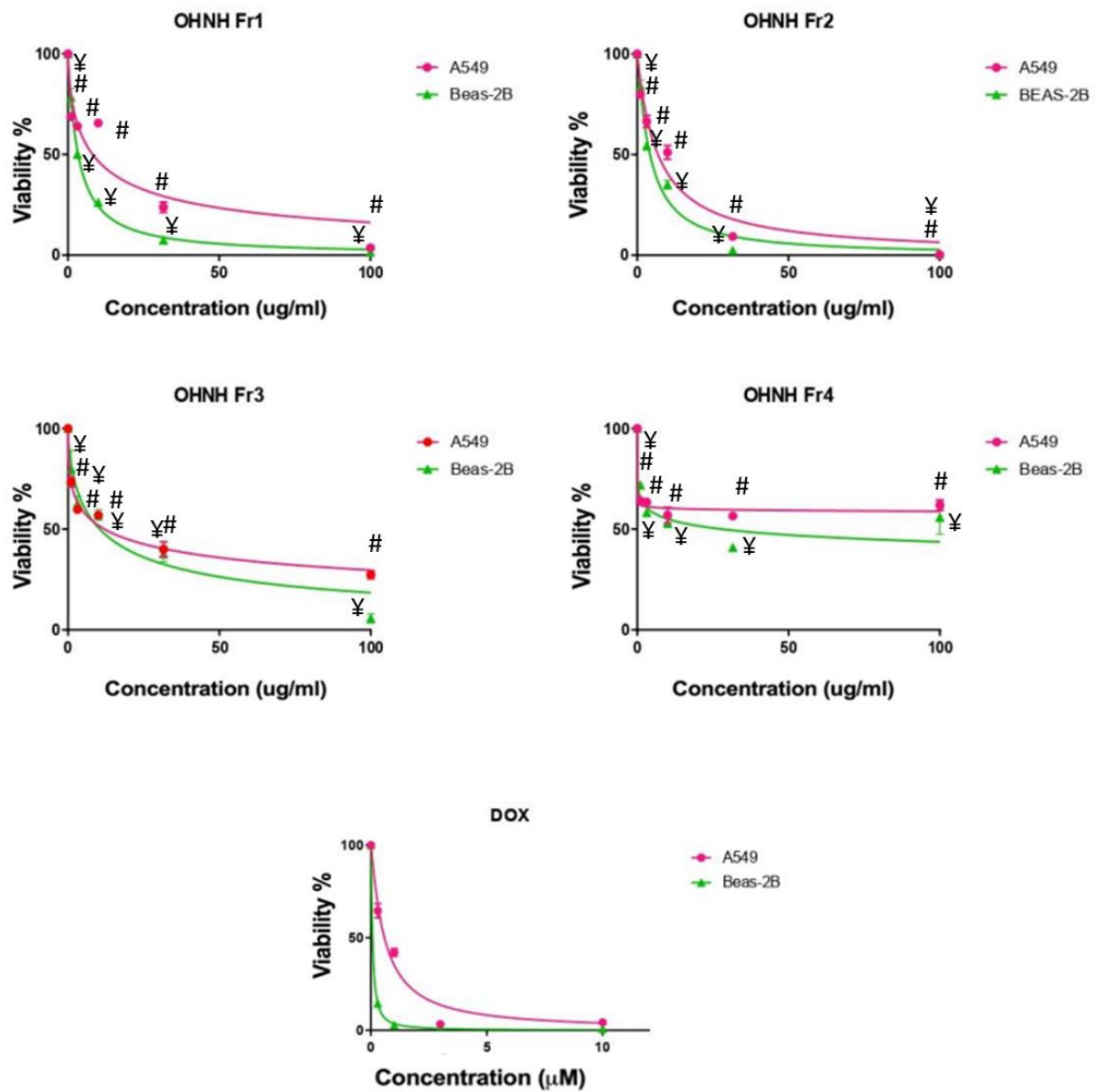


FIGURE S3 Cytotoxic effects of fractions obtained from n-hexane sub-extract of *O. hispidus* and doxorubicin on the tested cell lines (% mean cell viability \pm SEM) OH: *O. hispidus*; Dox: Doxorubicin; #: Statistically significant compared to control for A549 (One way-ANOVA); ¥: Statistically significant compared to control for BEAS-2B (One way-ANOVA).

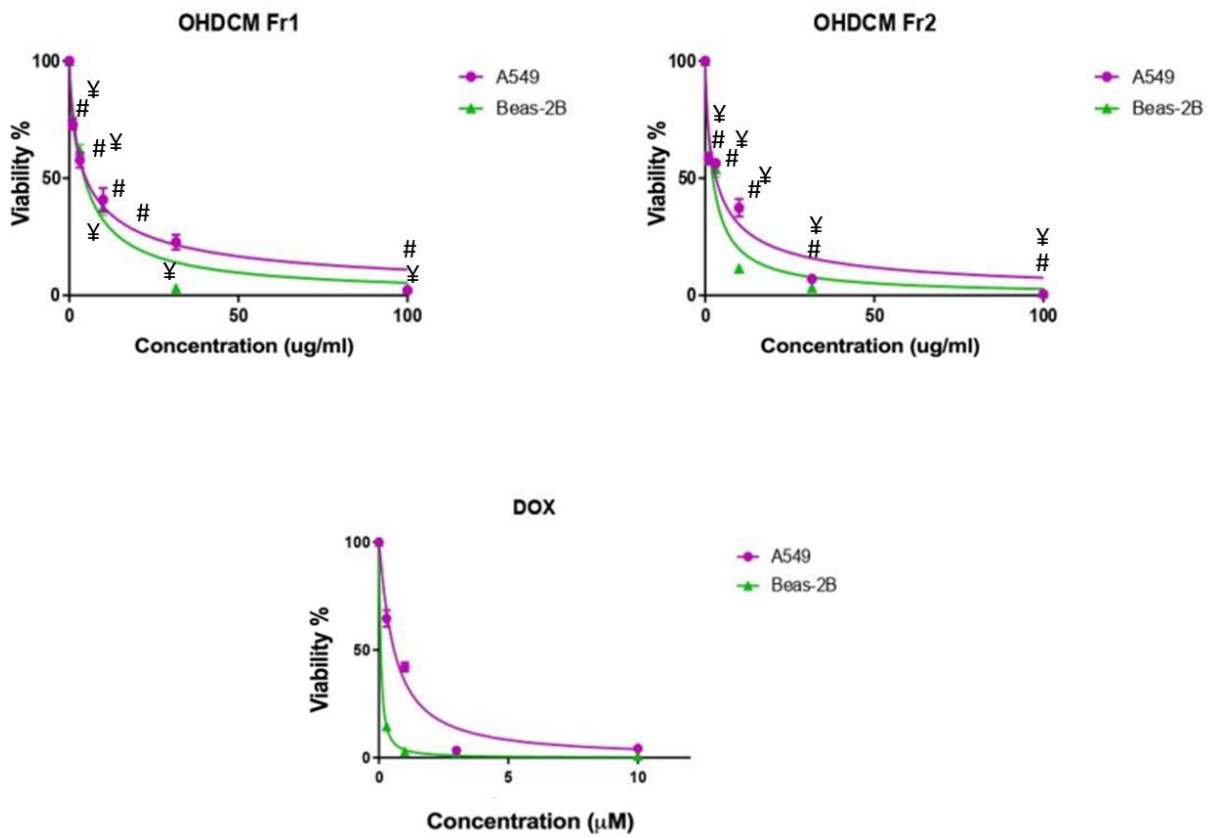


FIGURE S4 Cytotoxic effects of fractions obtained from dichloromethane subextract of *O. hispidus* and doxorubicin on the tested cell lines OH: *O. hispidus*; Dox: Doxorubicin; #: Statistically significant compared to control for A549 (One way-ANOVA); ¥: Statistically significant compared to control for BEAS-2B (One way-ANOVA).

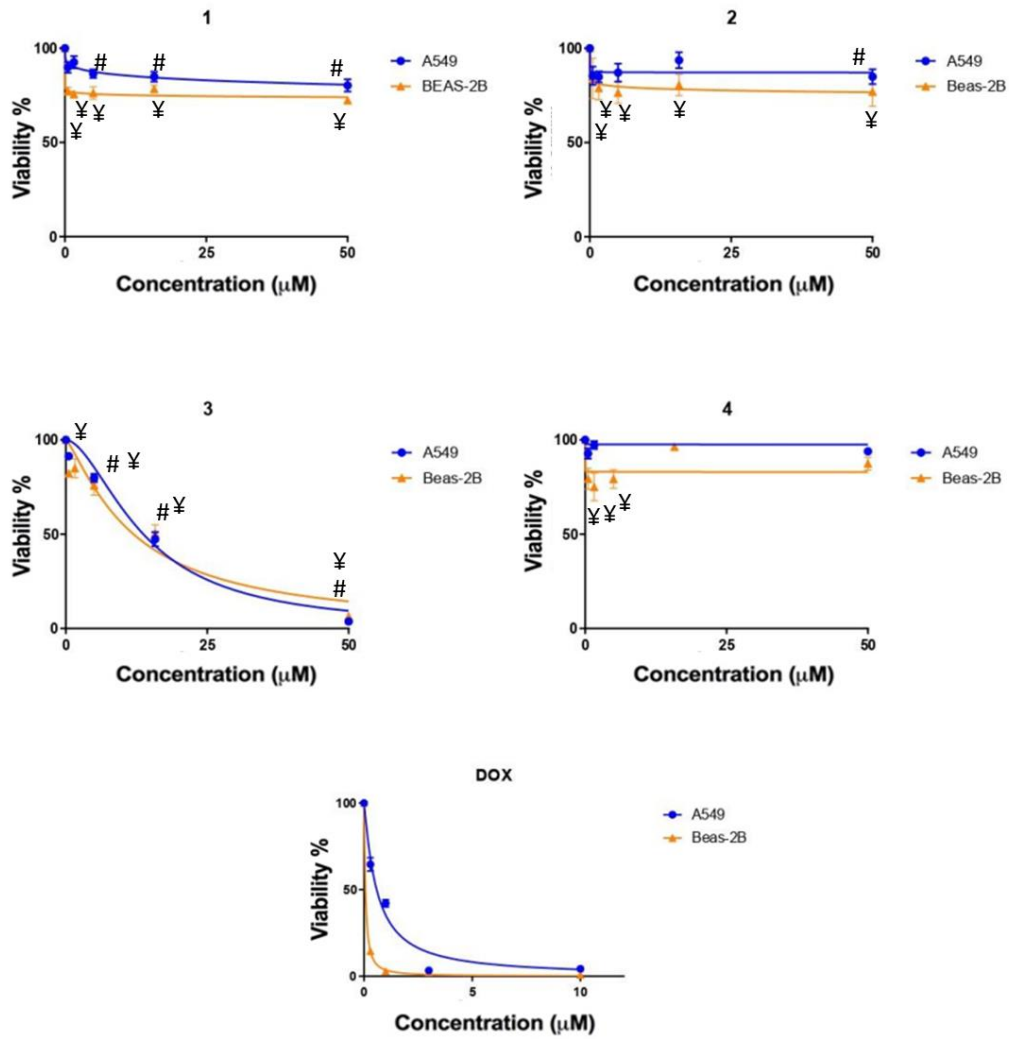


FIGURE S5 Cytotoxic effects of compounds isolated from active fractions of *O. hispidus* and doxorubicin on tested cell lines (% mean cell viability \pm SEM) Dox: Doxorubicin; 1: Umbelliferone 6-carboxylic acid; 2: Umbelliferone; 3: 2',6'-dihydroxy-4'-methoxy-3''-(α,α -dimethylallyl)-4''-hydroxy β -hydroxydihydrochalcone ; 4: Nodakenetin.

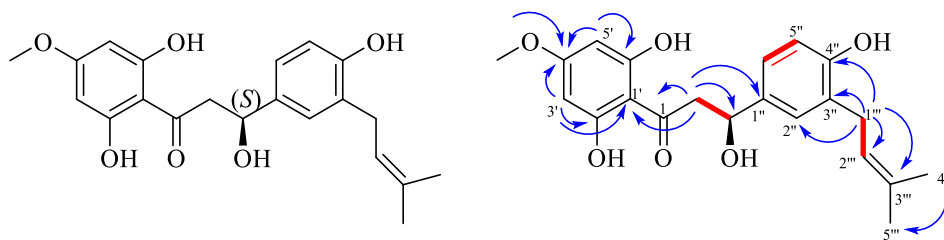


FIGURE S6 Chemical structure and key ^1H - ^1H COSY (—) ve HMBC (H—C) correlations for compound **3**

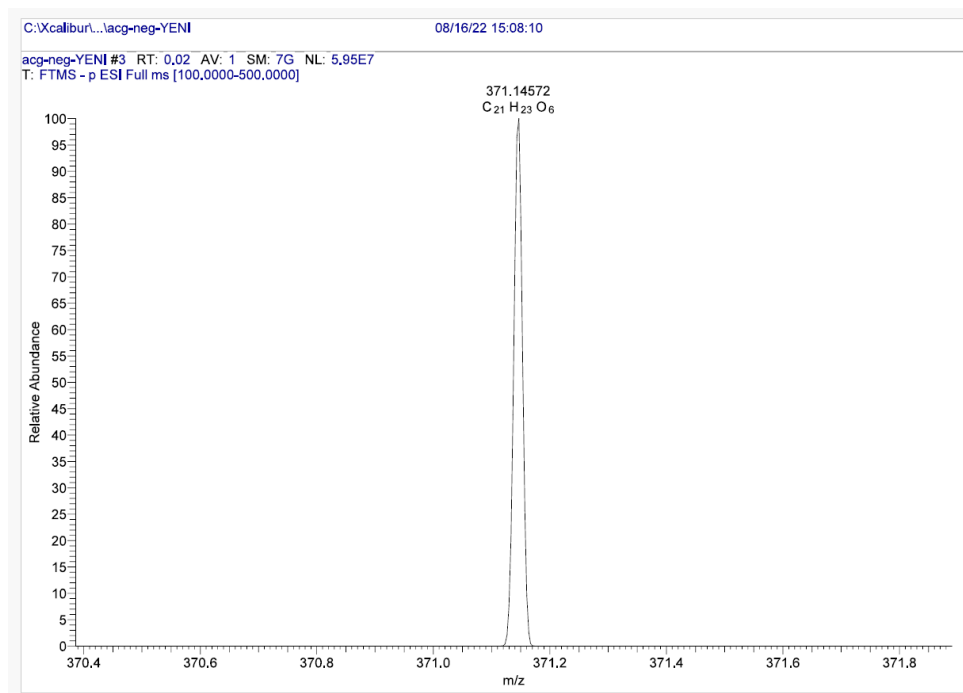


FIGURE S7 HR-ESI-MS Spectrum of compound **3** (negative mode)

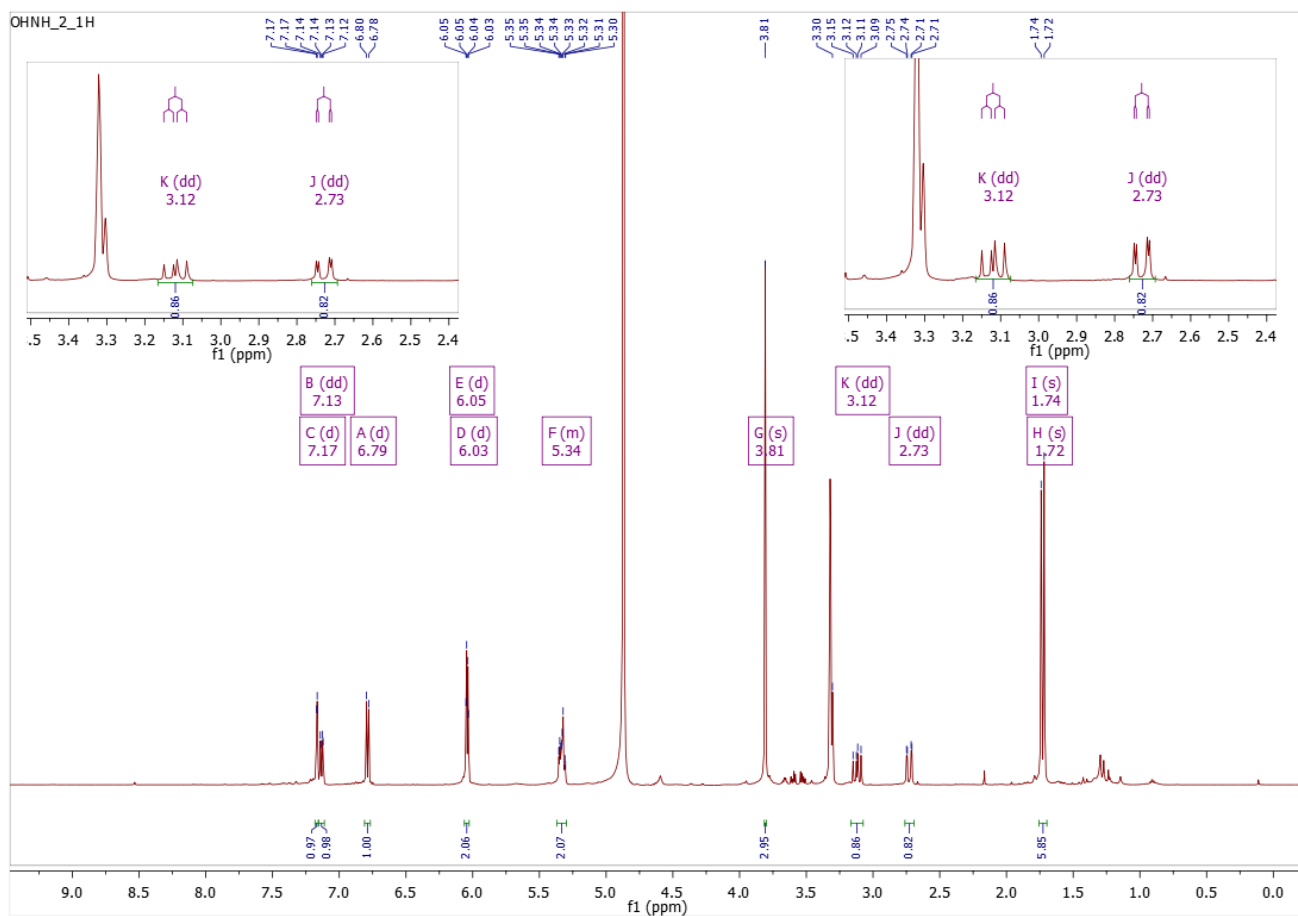


FIGURE S8 ^1H NMR spectrum of compound **3** (in CD_3OD , ^1H :500 MHz)

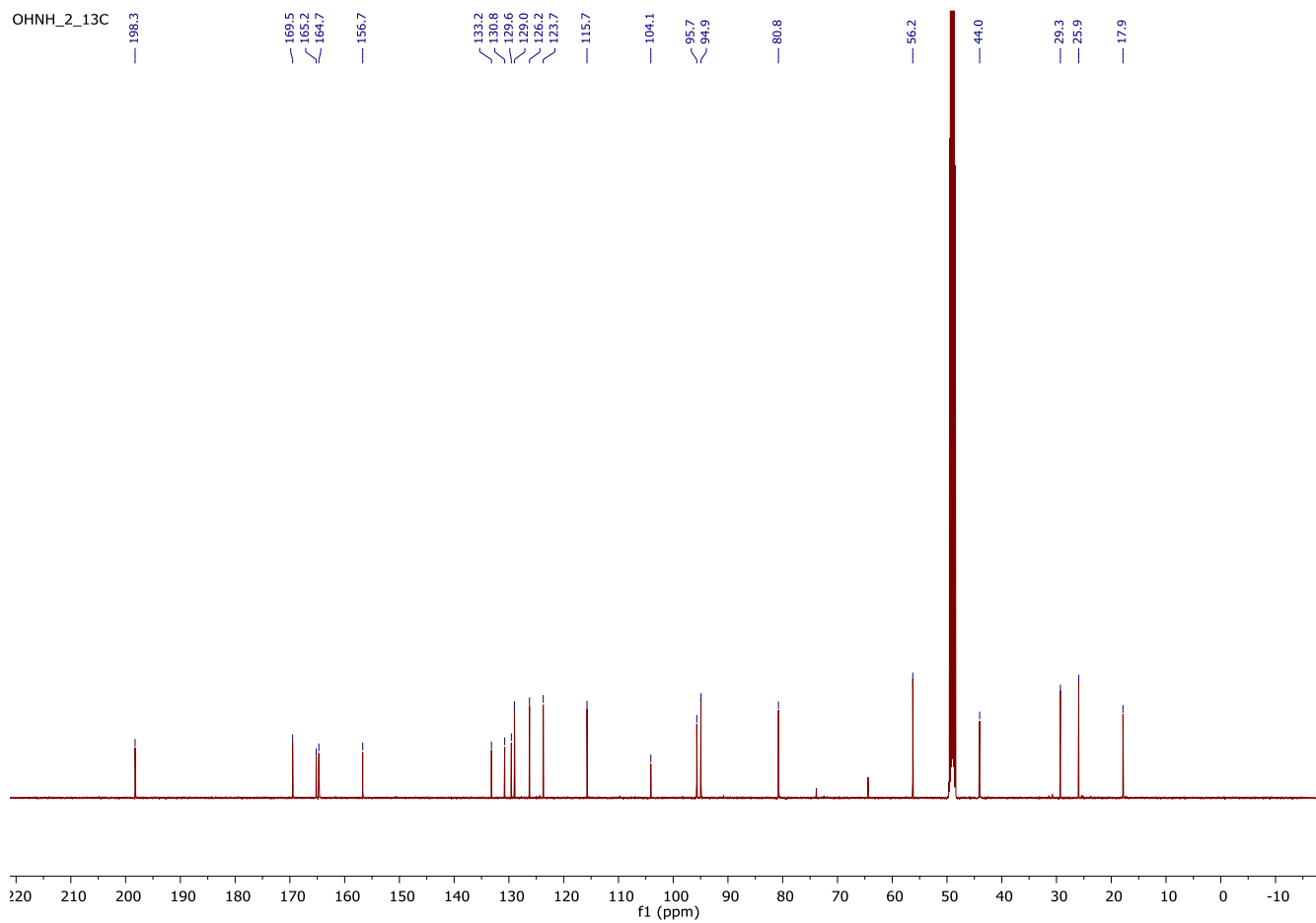


FIGURE S9 ^{13}C NMR spectrum of compound **3** (in CD_3OD , ^{13}C 125: MHz)

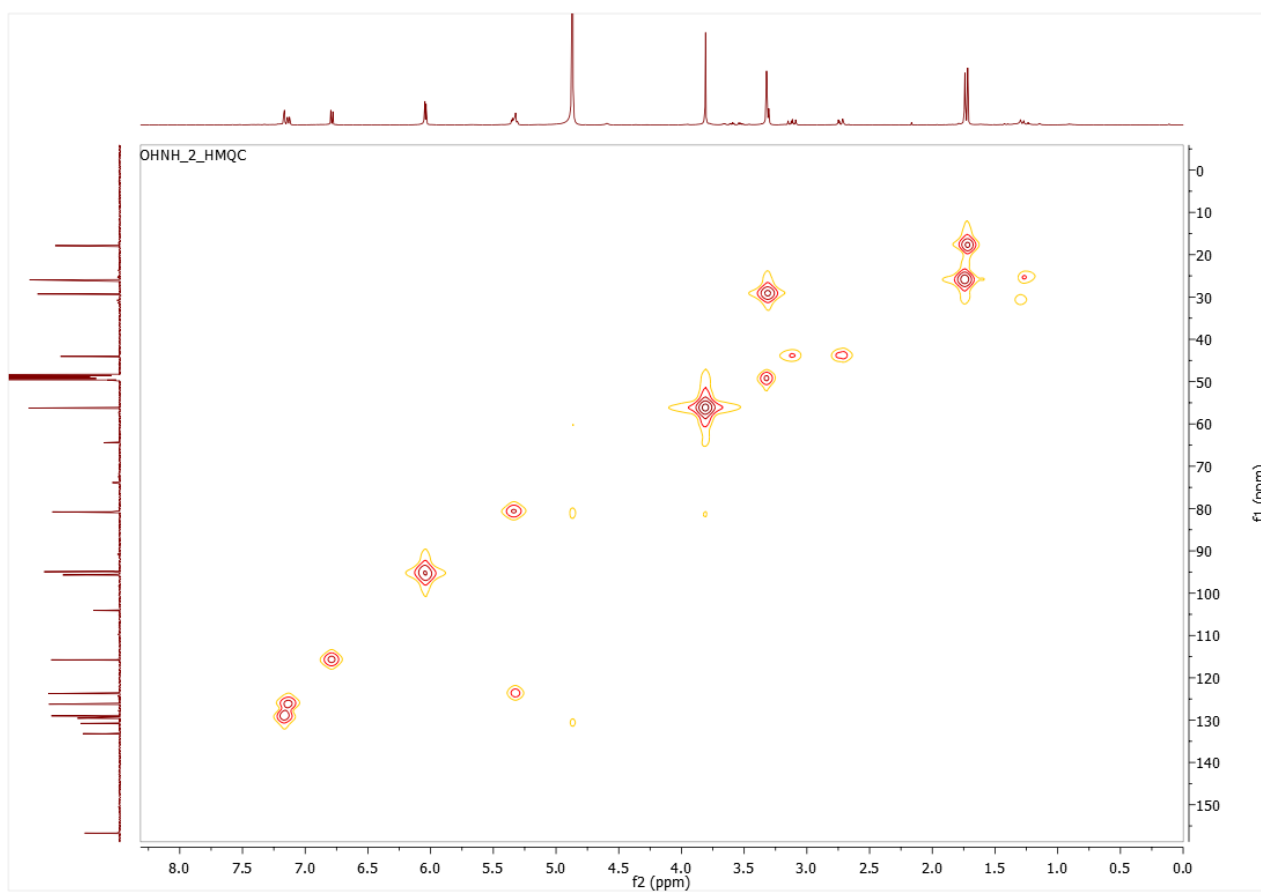


FIGURE S10 HMOC spectrum of compound **3**

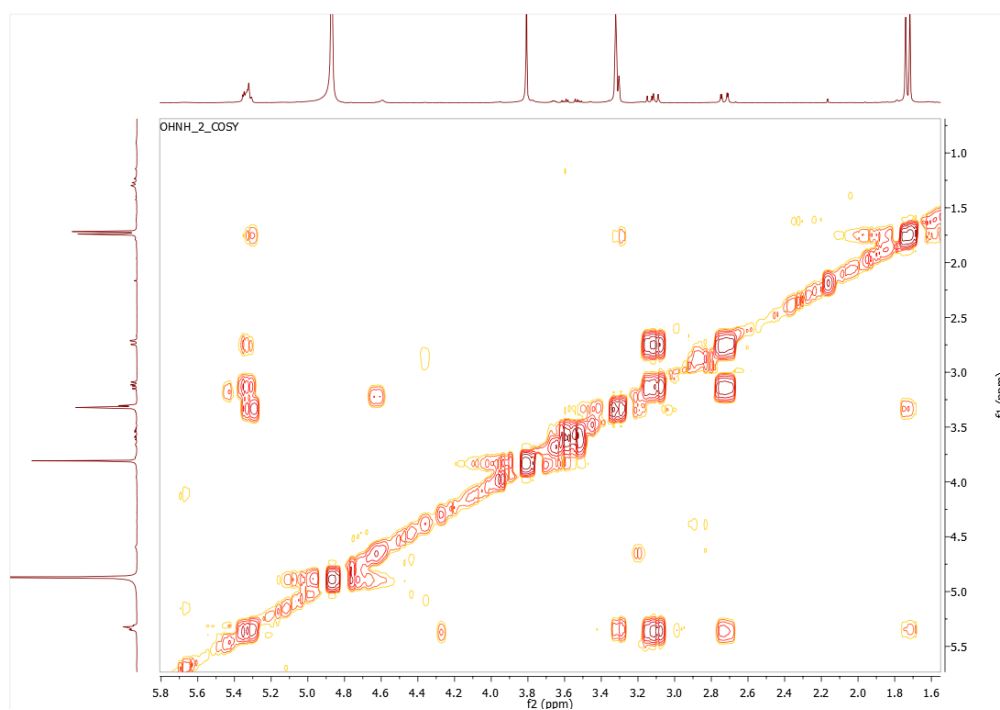
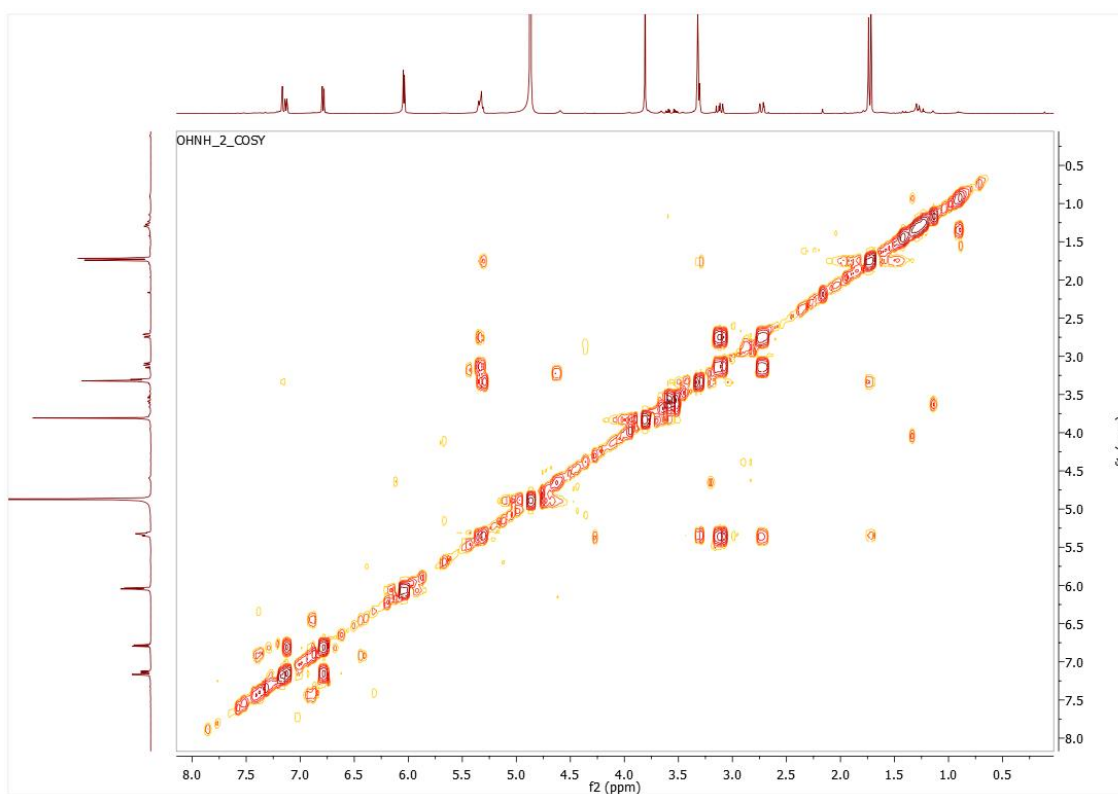


FIGURE S11 COSY spectra of compound 3

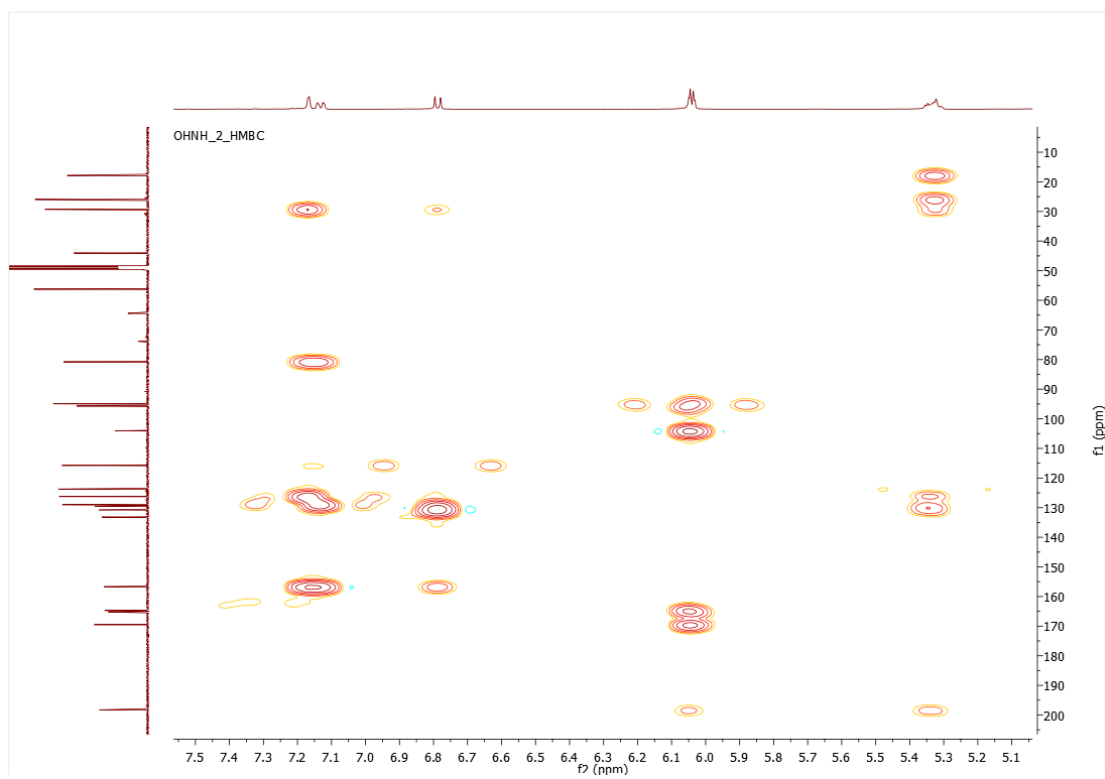
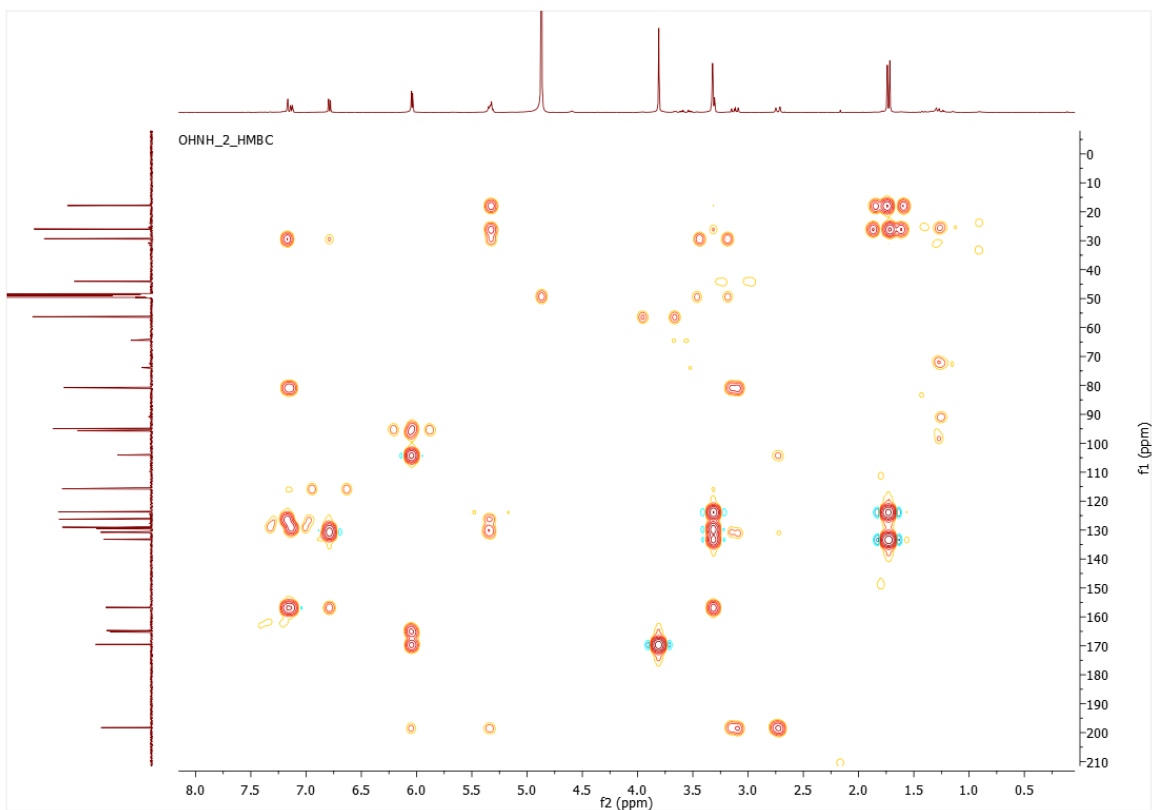


FIGURE S12 HMBC spectra of compound 3

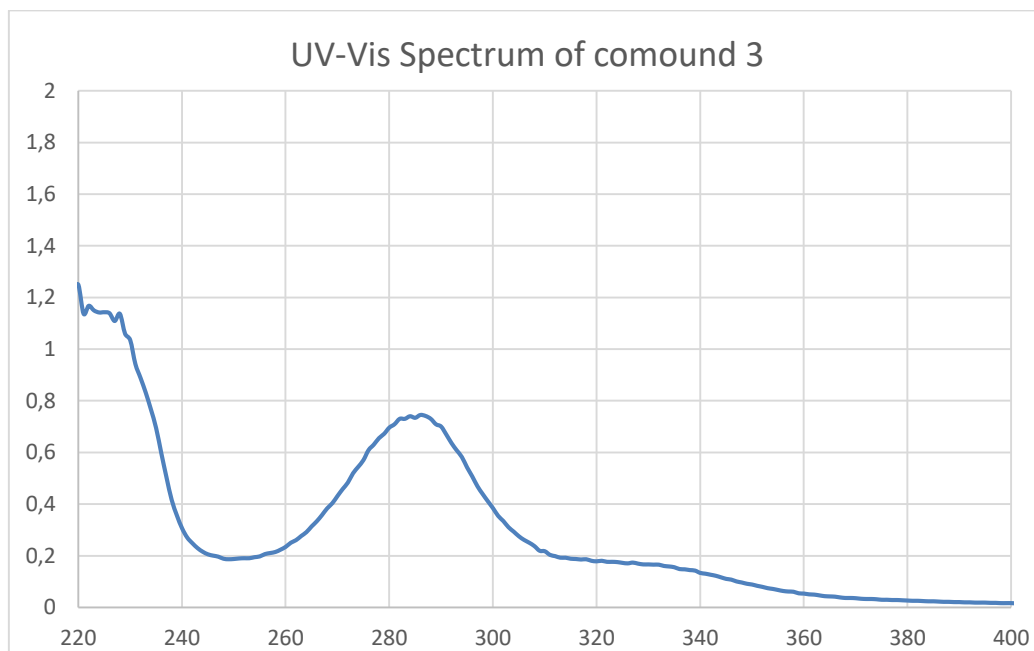


Figure S13 UV-Vis spectrum of Compound 3

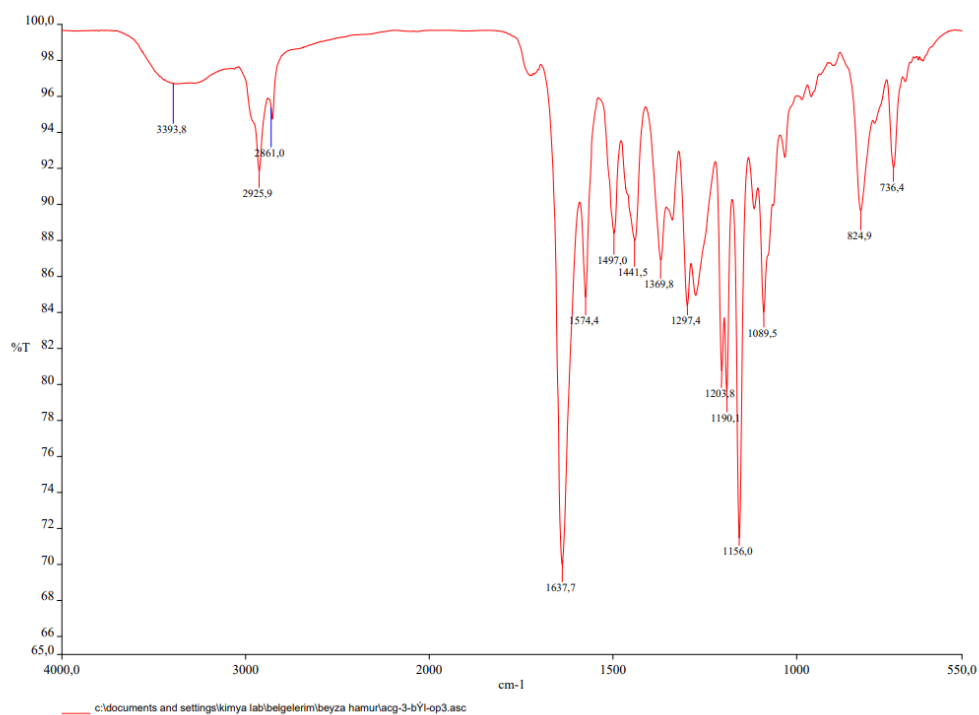


Figure S14 FTIR spectrum of Compound 3