

SUPPLEMENTARY MATERIAL

Cannabidiol may prevent the development of congestive hepatopathy secondary to right ventricular hypertrophy associated with pulmonary hypertension in rats.

Anna Krzyżewska, Marta Baranowska-Kuczko, Anna Galicka, Irena Kasacka, Krzysztof Mińczuk, Hanna Kozłowska

Correspondence: anna.krzyzewska@umb.edu.pl

Western blot:

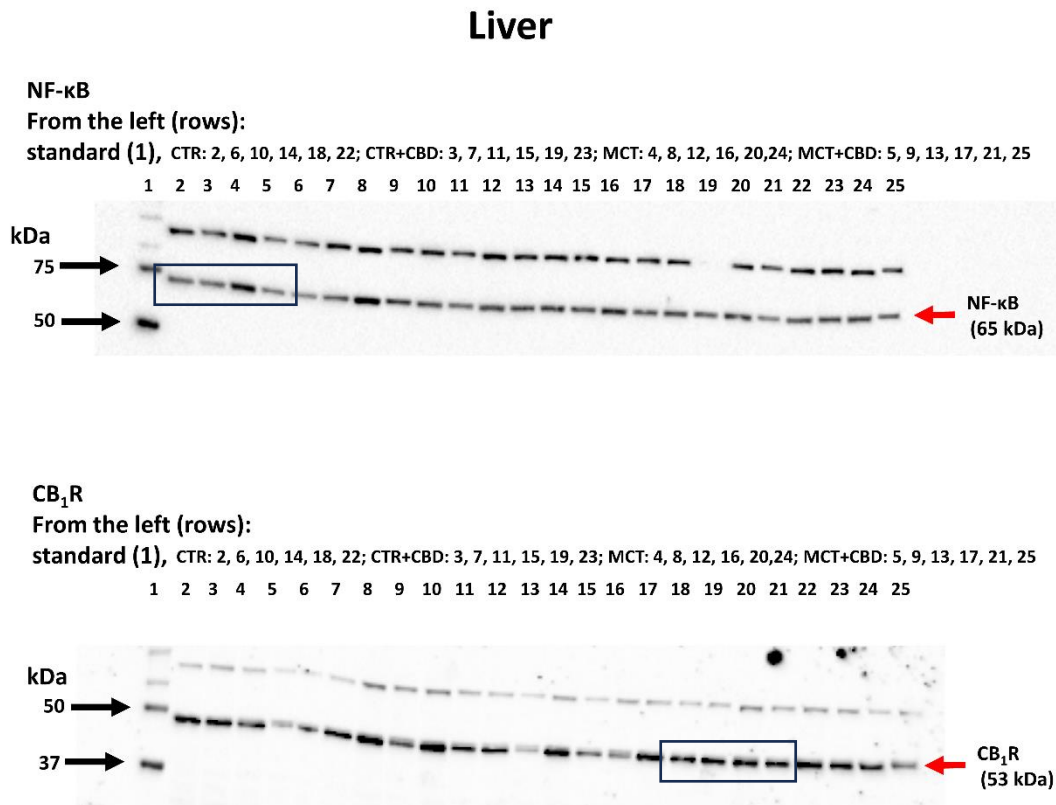


Figure S1. Uncropped western blots shown in Figure 3 and Figure 4. Abbreviations: CBD-cannabidiol; CTR-control; MCT-monocrotaline; NF- κ B - nuclear factor- κ B, CB₁R - cannabinoid receptor type 1.

The red arrows indicate bands detected with the anti- NF- κ B and anti-CB₁R antibodies.

The black arrows indicate specific molecular weights obtained using the Western C standard which help identify and characterize the molecules separated in a gel

The bands highlighted with the frames are shown in the manuscript as representative images.

CB₂R

From the left (rows):

standard (25), CTR: 1, 5, 9, 13, 18, 21; CTR+CBD: 2, 6, 12, 16, 18, 22; MCT: 3, 7, 11, 15, 19,23; MCT+CBD: 4, 8, 12, 16, 20, 24

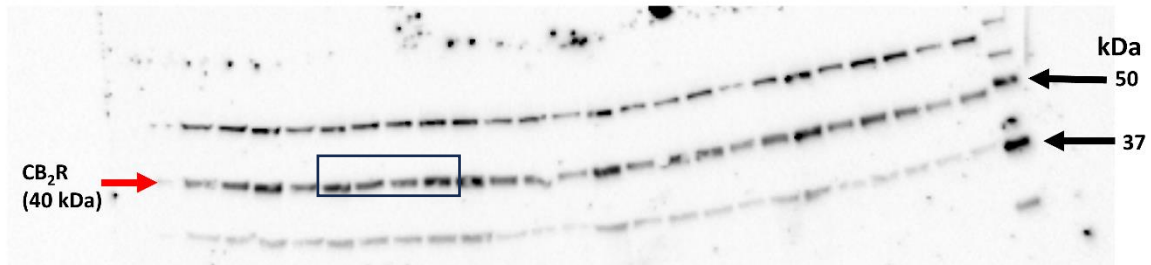


Figure S2. Uncropped western blots shown in Figure 4. Abbreviations: CBD- cannabidiol; CTR-control; MCT-monocrotaline; CB₂R – cannabinoid receptor type 2.

The red arrows indicate bands detected with the anti-CB₂R antibodies.

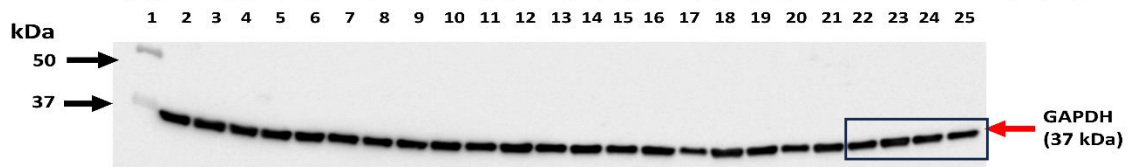
The black arrows indicate specific molecular weights obtained using the Western C standard which help identify and characterize the molecules separated in a gel.

The bands highlighted with the frames are shown in the manuscript as representative images.

GAPDH

From the left (rows):

standard (1), CTR: 2, 6, 10, 14, 18, 22; CTR+CBD: 3, 7, 11, 15, 19, 23; MCT: 4, 8, 12, 16, 20,24; MCT+CBD: 5, 9, 13, 17, 21, 25



GAPDH

From the left (rows):

CTR: 1, 5, 9, 13, 18, 21; CTR+CBD: 2, 6, 12, 16, 18, 22; MCT: 3, 7, 11, 15, 19,23; MCT+CBD: 4, 8, 12, 16, 20, 24



Figure S3. Uncropped western blots shown in Figure 3 and Figure 4. Abbreviations: CBD- cannabidiol; CTR-control; MCT-monocrotaline, GAPDH- Glyceraldehyde 3-Phosphate Dehydrogenase.

The red arrows indicate bands detected with the anti-GAPDH antibodies.

The black arrows indicate specific molecular weights obtained using the Western C standard which help identify and characterize the molecules separated in a gel.

The bands highlighted with the frames are shown in the manuscript as representative images.

Histology:

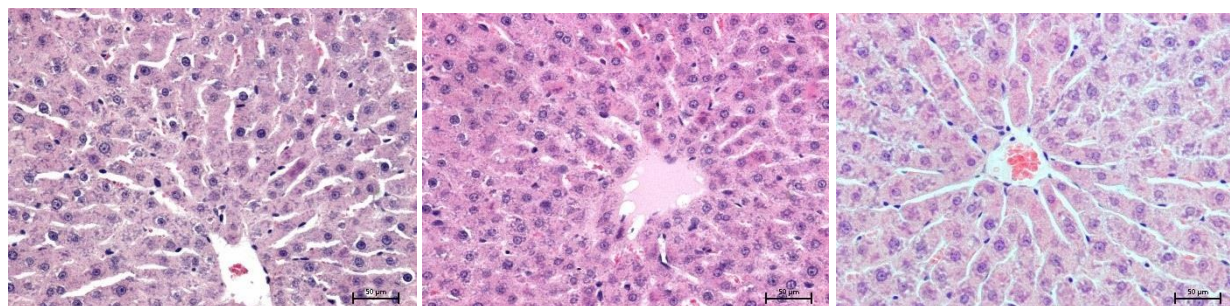


Figure S4. Example images of liver sections stained with hematoxylin and eosin from 3 different animals from control (CTR) group.

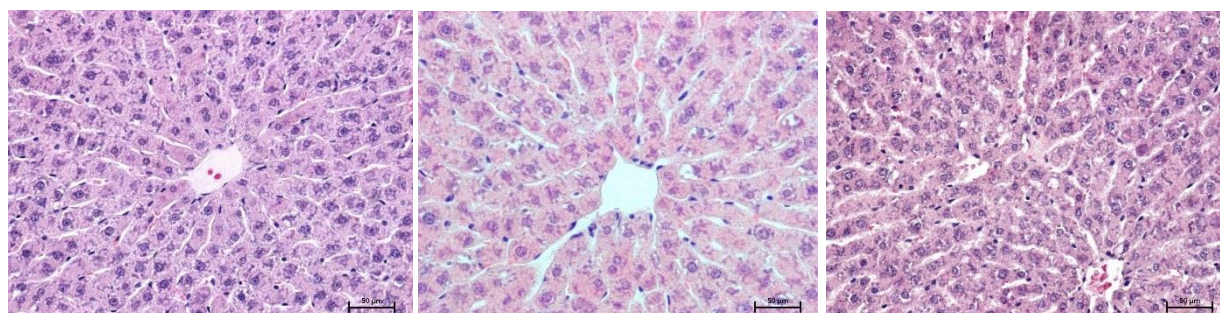


Figure S5. Example images of liver sections stained with hematoxylin and eosin from 3 different animals from control + cannabidiol (CTR + CBD) group.

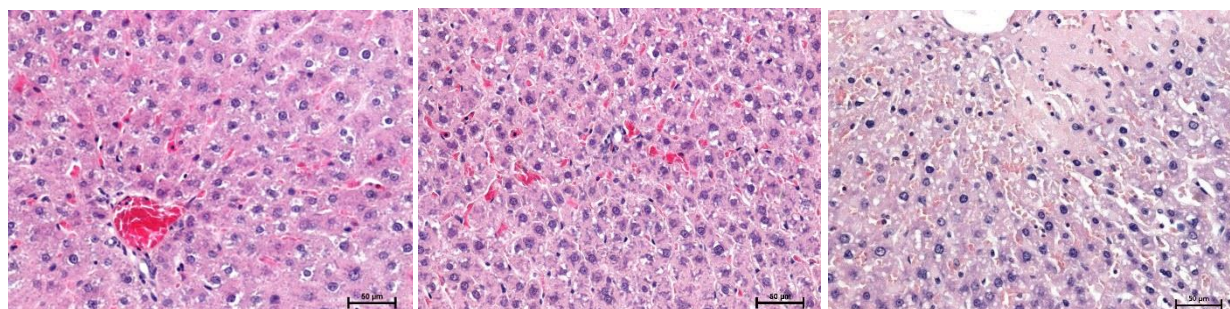


Figure S6. Example images of liver sections stained with hematoxylin and eosin from 3 different animals from monocrotaline (MCT) group.

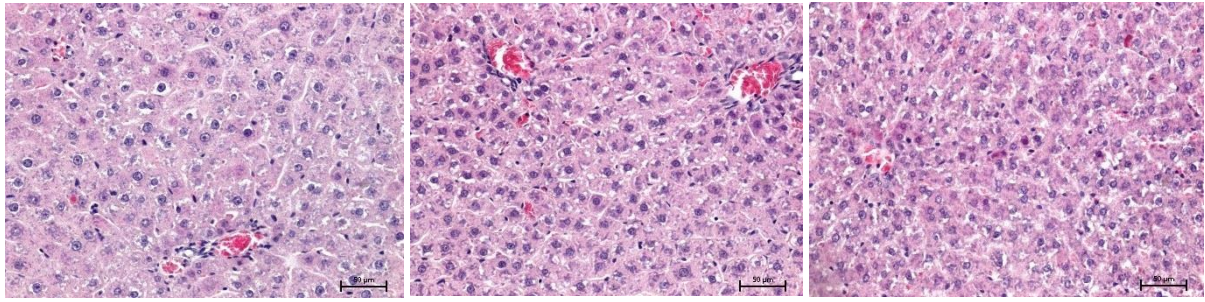


Figure S7. Example images of liver sections stained with hematoxylin and eosin from 3 different animals from monocrotaline + cannabidiol (MCT + CBD) group.