

Original images for blots

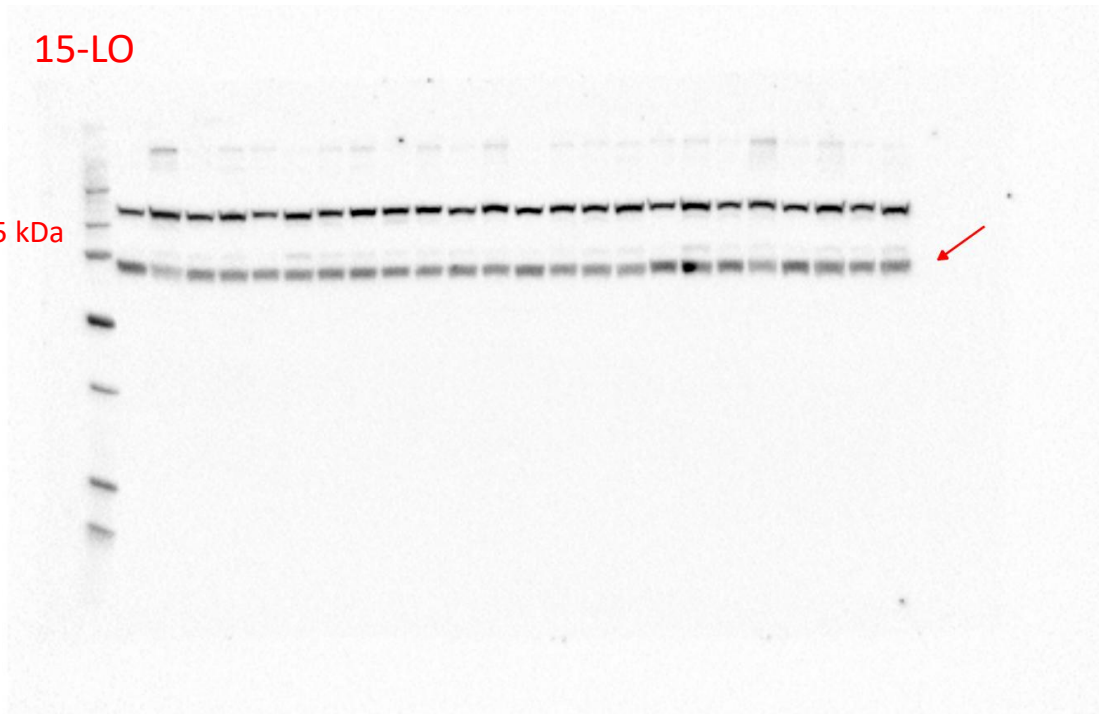
The upper images represent the uncropped chemiluminescent blot image corresponding with the images placed in the manuscript.

The lower images represent the stain-free blot image of the same membrane after transfer which is used for creating a multichannel image (overlaid view) to normalize data.

Loading order: control (C), control+cannabidiol (C+CBD), high-fat diet (HFD), high-fat diet + cannabidiol (HFD+CBD).

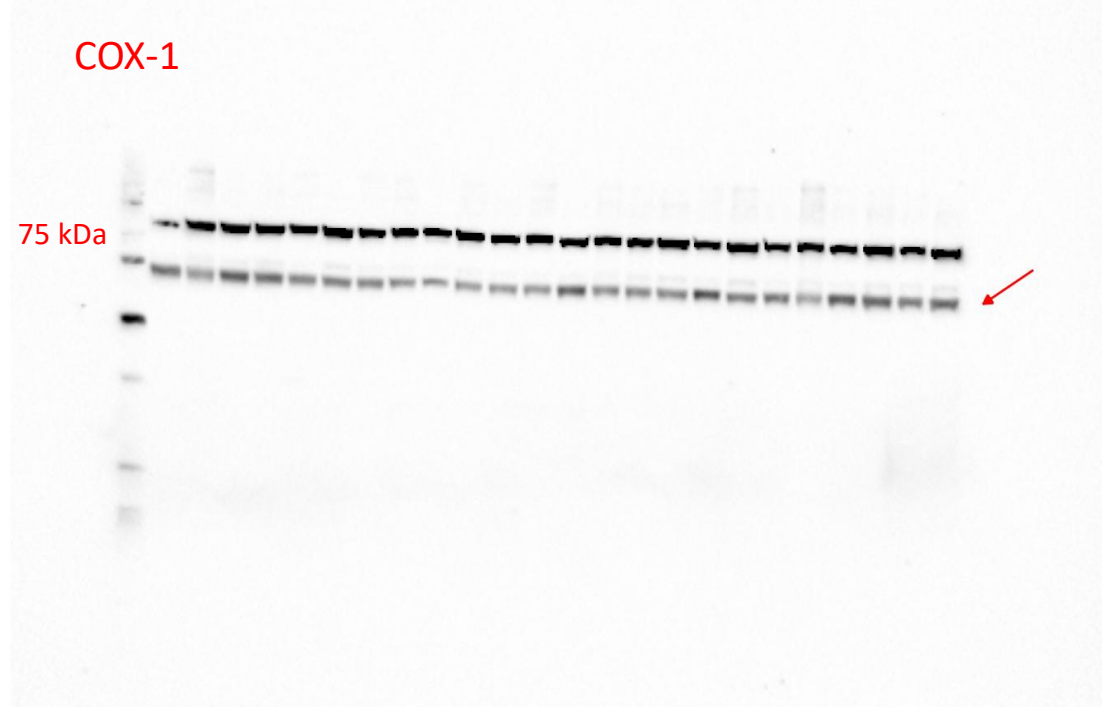
15-LO

75 kDa

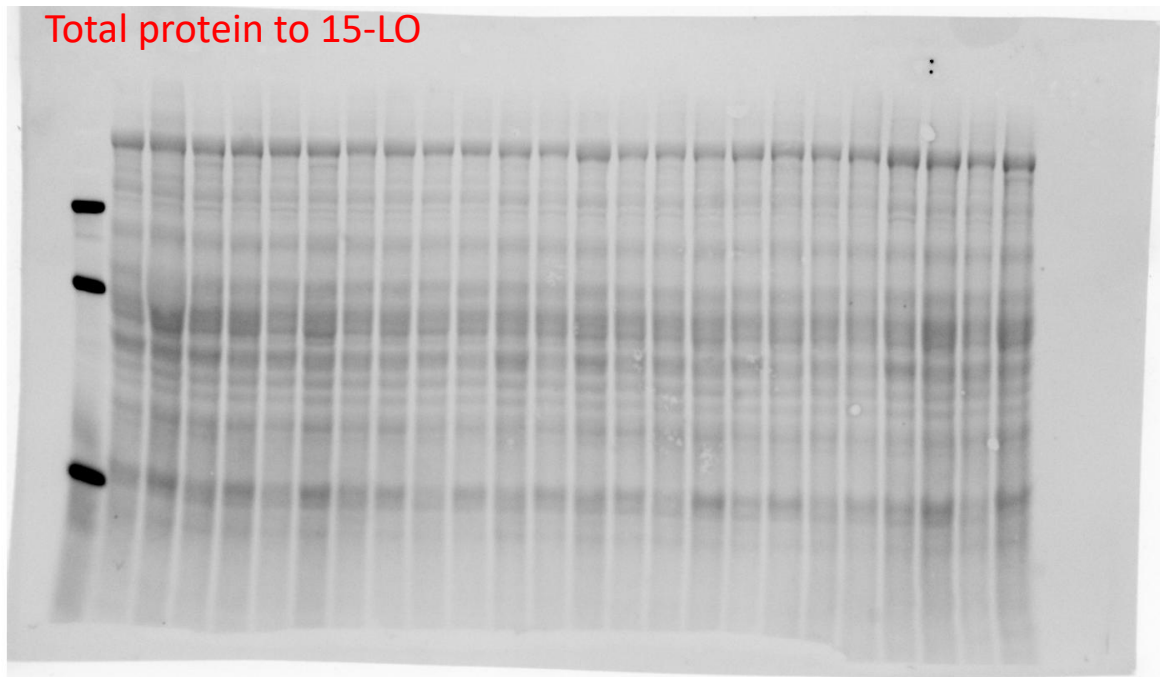


COX-1

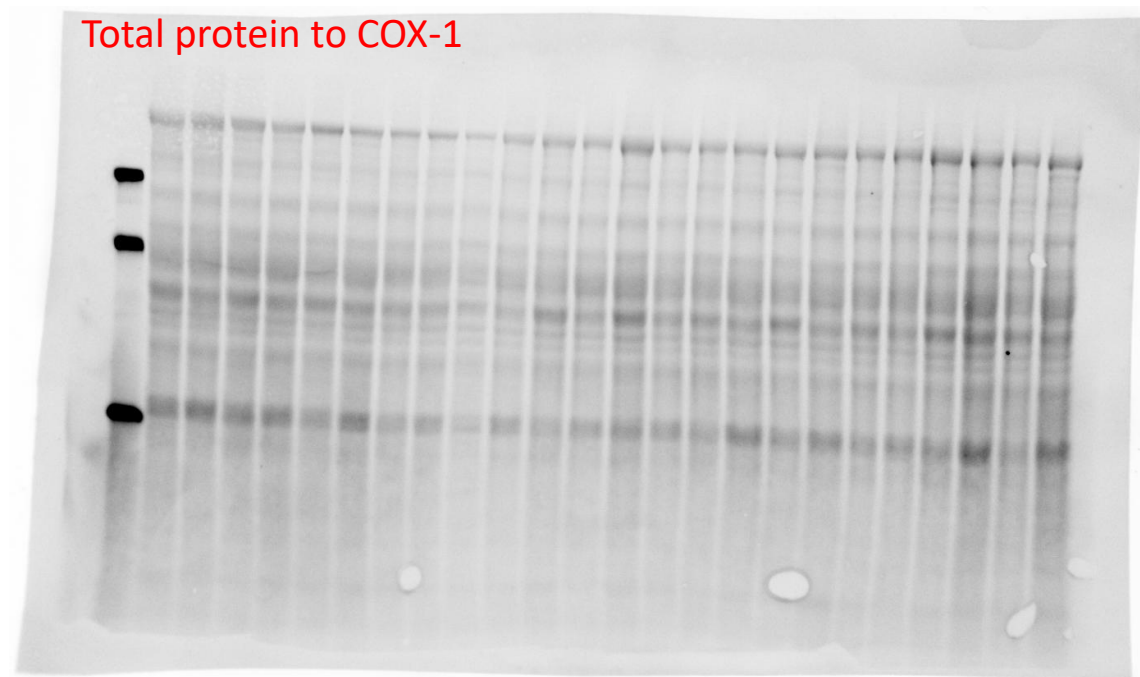
75 kDa



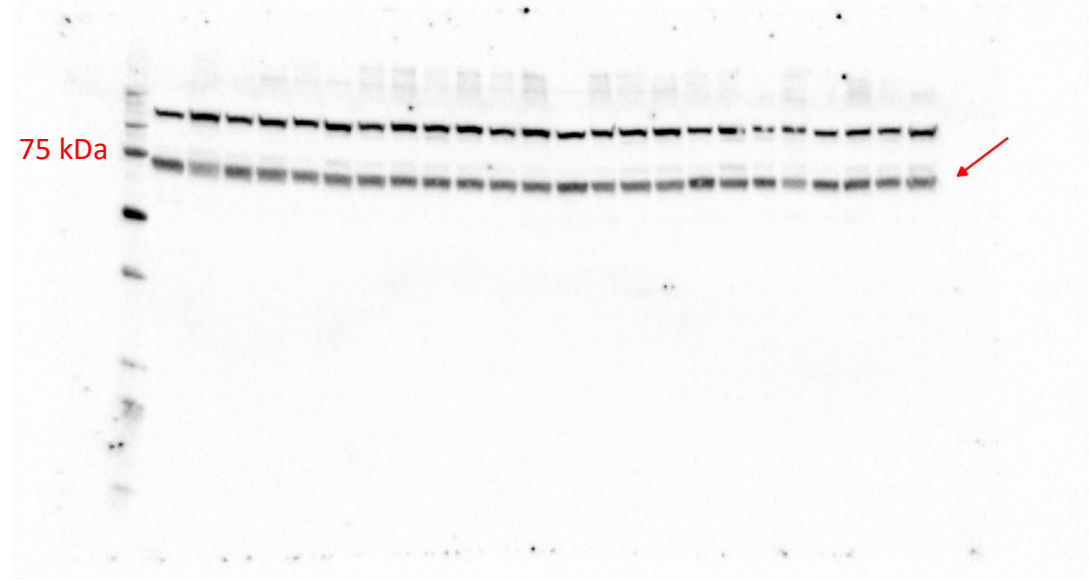
Total protein to 15-LO



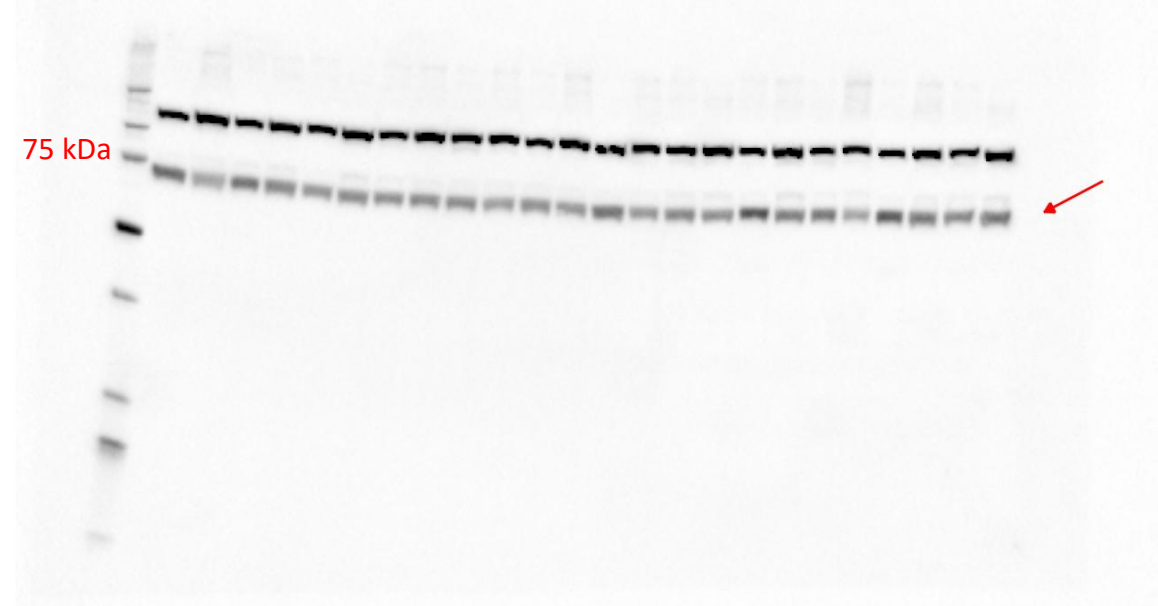
Total protein to COX-1



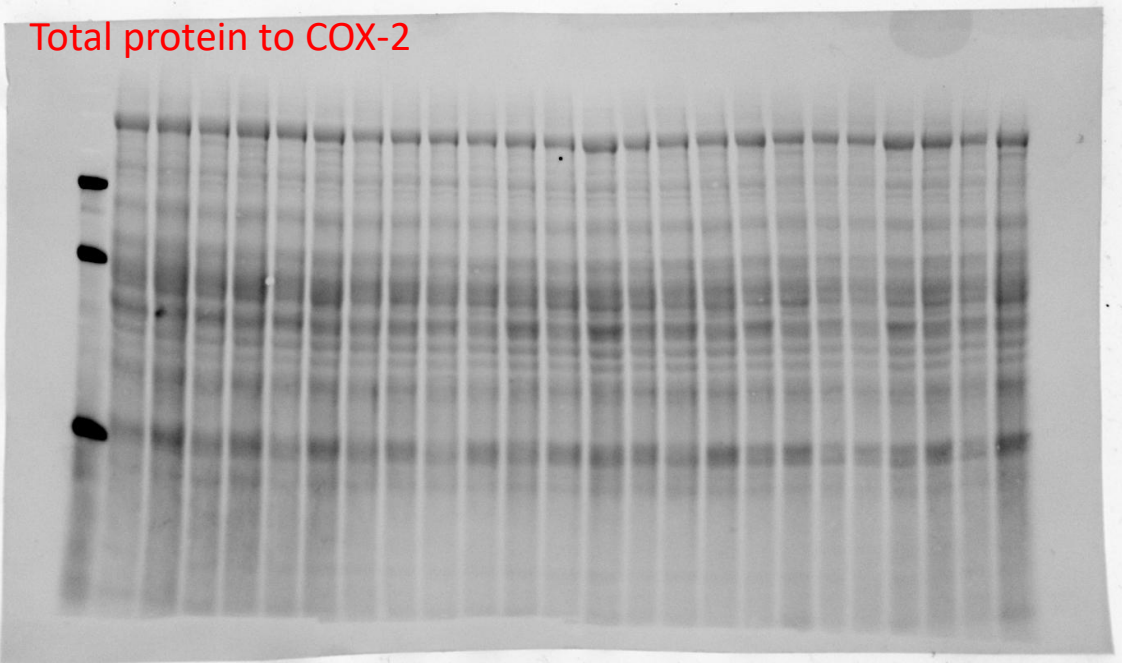
COX-2



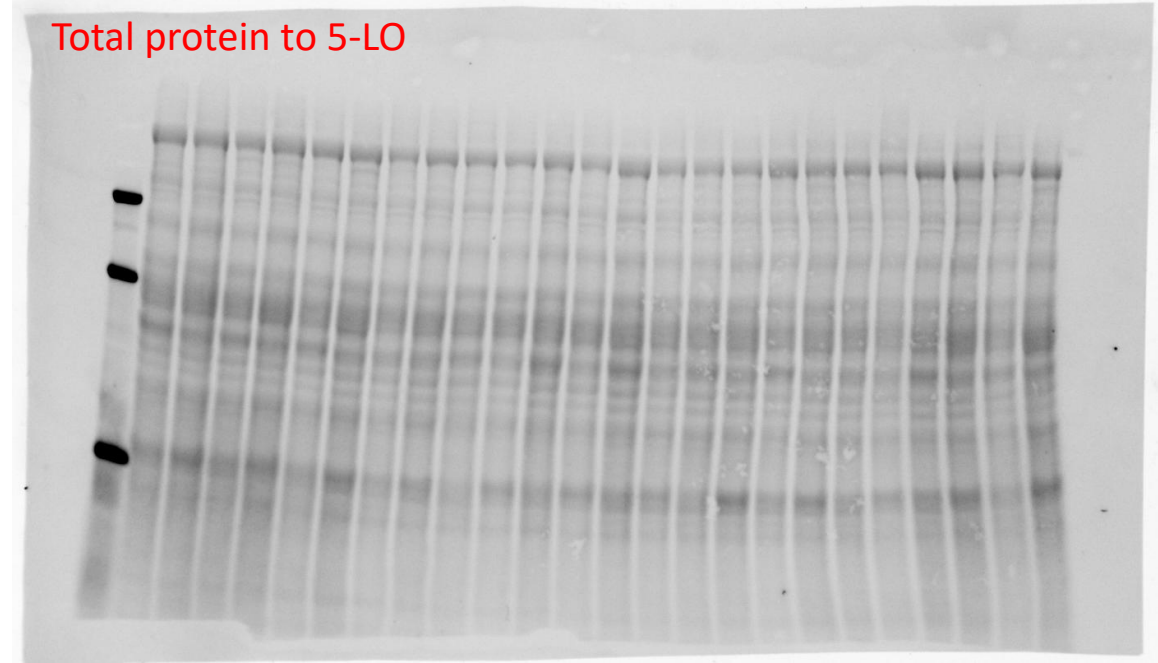
5-LO



Total protein to COX-2

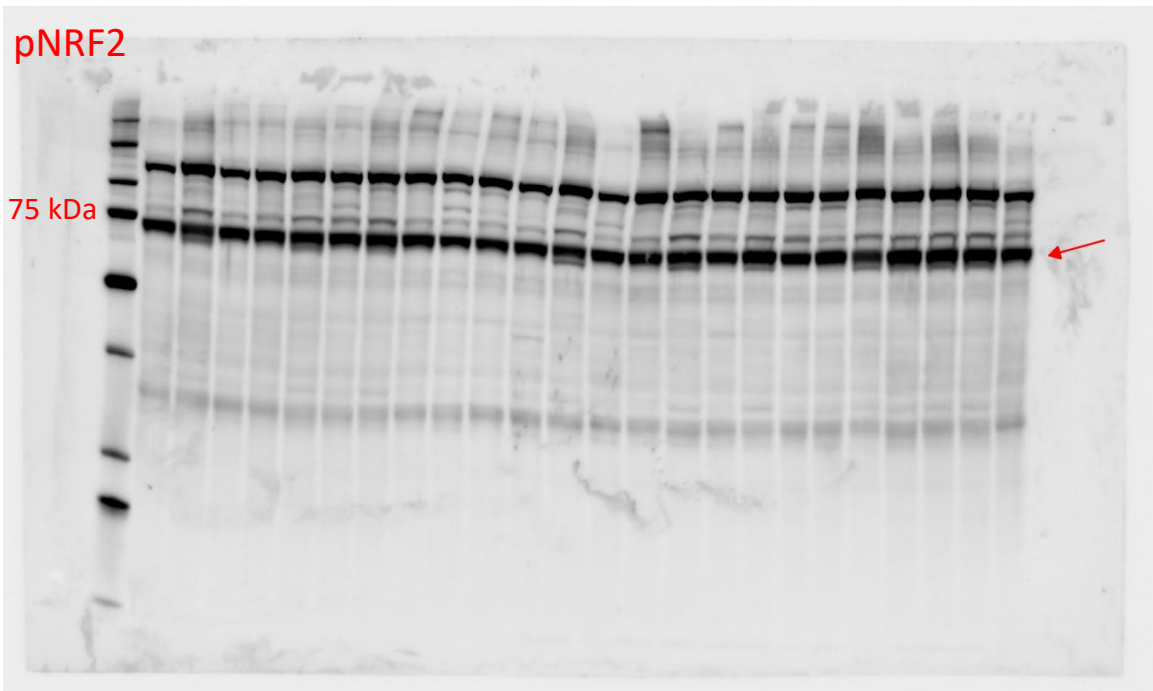


Total protein to 5-LO



pNRF2

75 kDa



Total protein to pNRF2

