

## **STAP-2 facilitates insulin signaling through binding to CAP/c-Cbl and regulates adipocyte differentiation.**

Yuichi Sekine<sup>1,\*</sup>, Kazuna Kikkawa<sup>1</sup>, Sachie Honda<sup>1</sup>, Yuto Sasaki<sup>2</sup>, Shoya Kawahara<sup>2</sup>, Akihiro Mizushima<sup>2</sup>, Sumihito Togi<sup>3</sup>, Masahiro Fujimuro<sup>1</sup>, Kenji Oritani<sup>4</sup>, Tadashi Matsuda<sup>2,\*</sup>

<sup>1</sup>Department of Cell Biology, Kyoto Pharmaceutical University, Kyoto, 607-8412, Japan

<sup>2</sup>Department of Immunology, Graduate School of Pharmaceutical Sciences, Hokkaido University, Sapporo, 060-0812, Japan

<sup>3</sup>Division of Genomic Medicine, Department of Advanced Medicine, Medical Research Institute, Kanazawa Medical University, Kahoku, Ishikawa, 920-0293, Japan

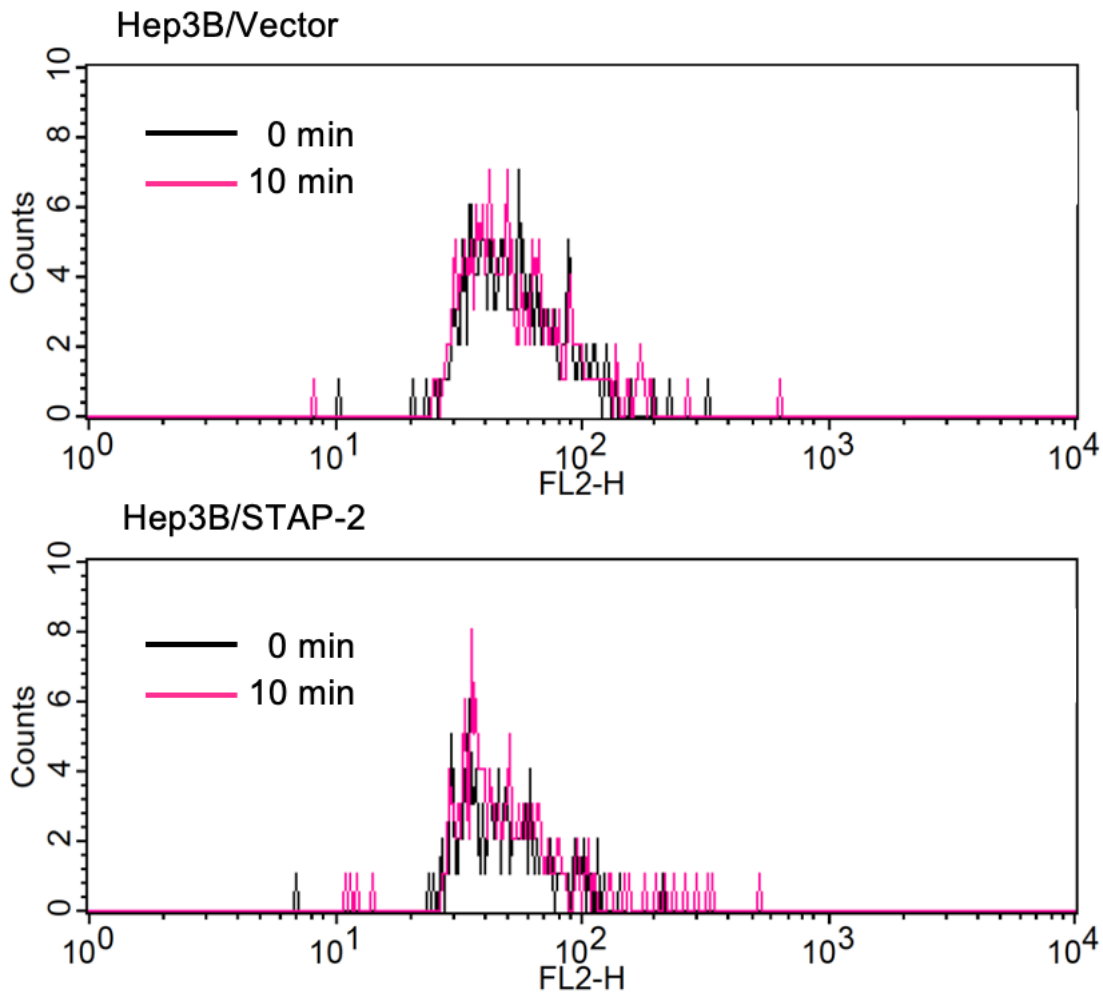
<sup>4</sup>Department of Hematology, International University of Health and Welfare, Narita, Chiba, 286-8686, Japan

\*Author to whom correspondence should be addressed,

Dr. Yuichi Sekine: [sekine@mb.kyoto-phu.ac.jp](mailto:sekine@mb.kyoto-phu.ac.jp),

Dr. Tadashi Matsuda: [tmatsuda@pharm.hokudai.ac.jp](mailto:tmatsuda@pharm.hokudai.ac.jp)

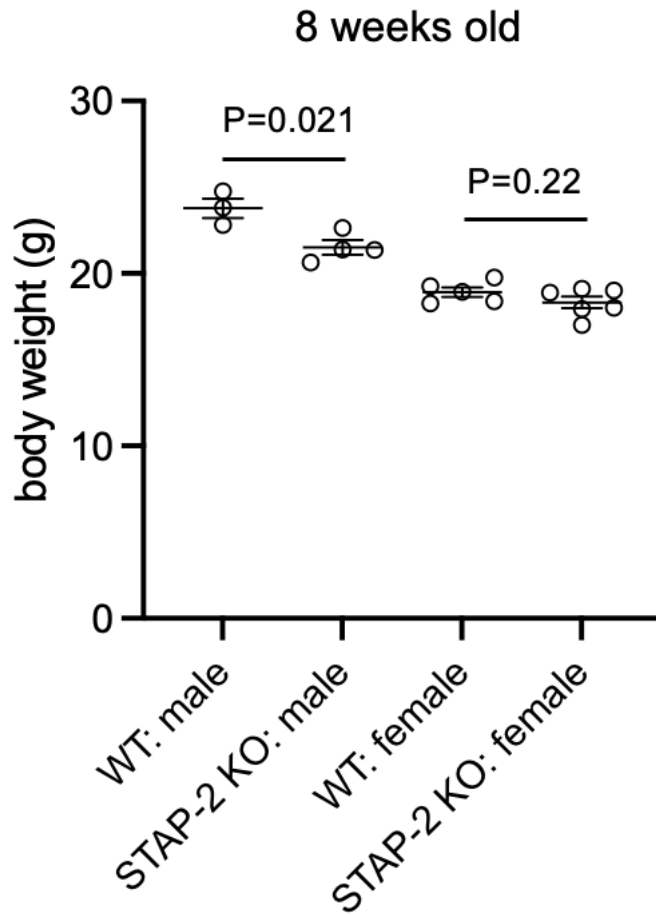
## Supplementary Figure S1



### Supplementary Figure S1.

Hep3B/Vector or stably expressing STAP-2 were transfected with GLUT4-Myc-GFP. Thirty-six h after transfection, cells were starved for 12 h and stimulated without (blue line) or with insulin (1  $\mu\text{g}/\text{ml}$ ) for 10 min (black line). The histograms show the surface-exposed GLUT4-Myc levels in the GFP-positive cells.

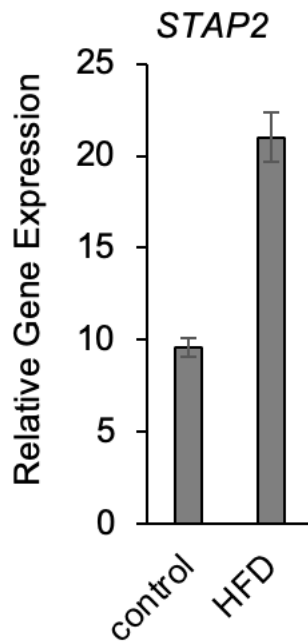
## Supplementary Figure S2



### Supplementary Figure S2.

The graph shows body weights of Normal diet-fed animals at 8 weeks old with mean  $\pm$  SEM. WT male (n=3) and female (n=5), STAP-2 KO male (n=4) and female (n=6). Student's two-tailed t test.

## Supplementary Figure S3



### Supplementary Figure S3.

The graph shows *Stap2* mRNA expression in white adipose tissues (WAT) from HFD feeding mice using publicly available RNA-seq data (NCBI GEO; GSE129573). Error bars represent  $\pm$ SEM, n=2.