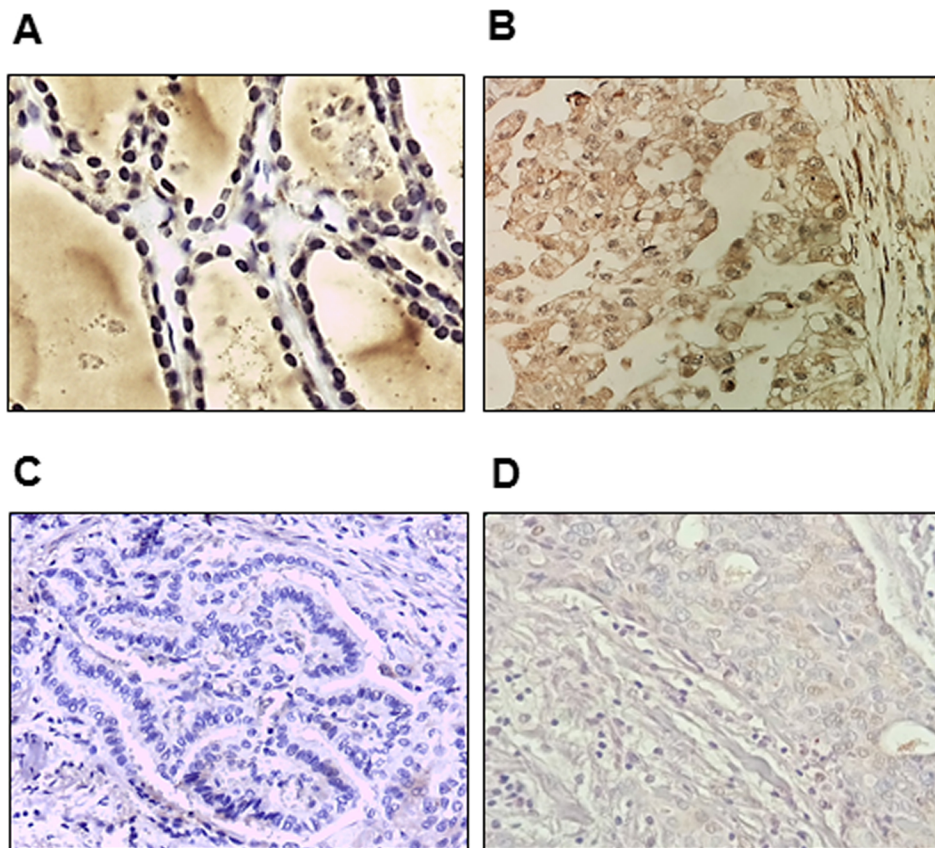
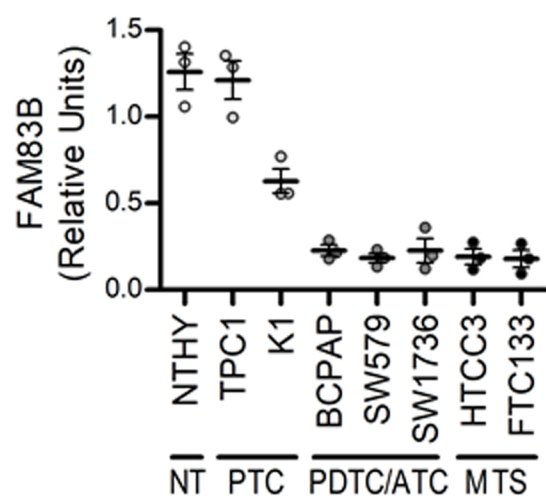
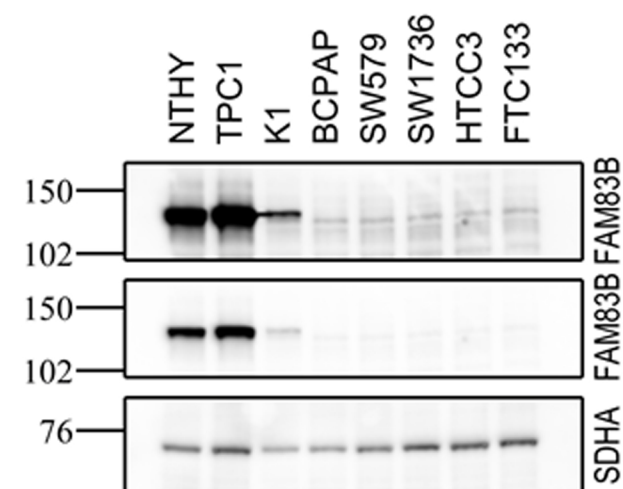
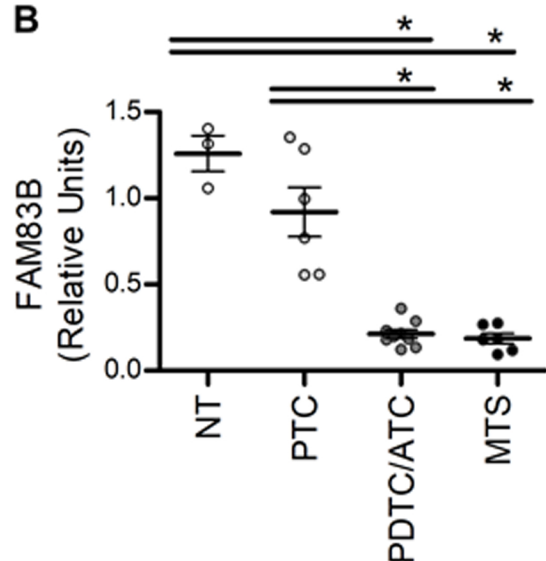


Supplementary Figure 1: FAM83B expression in thyroid paraffin-embedded tissues.

A positive cytoplasmic FAM83B staining was observed in FFPE normal thyroid tissue (A) and in follicular thyroid carcinoma (B) samples (Magnification 40X). No FAM83B staining was detected in papillary thyroid carcinoma (C) and in poorly differentiated thyroid carcinoma (D) samples (Magnification 40X).



A**B**

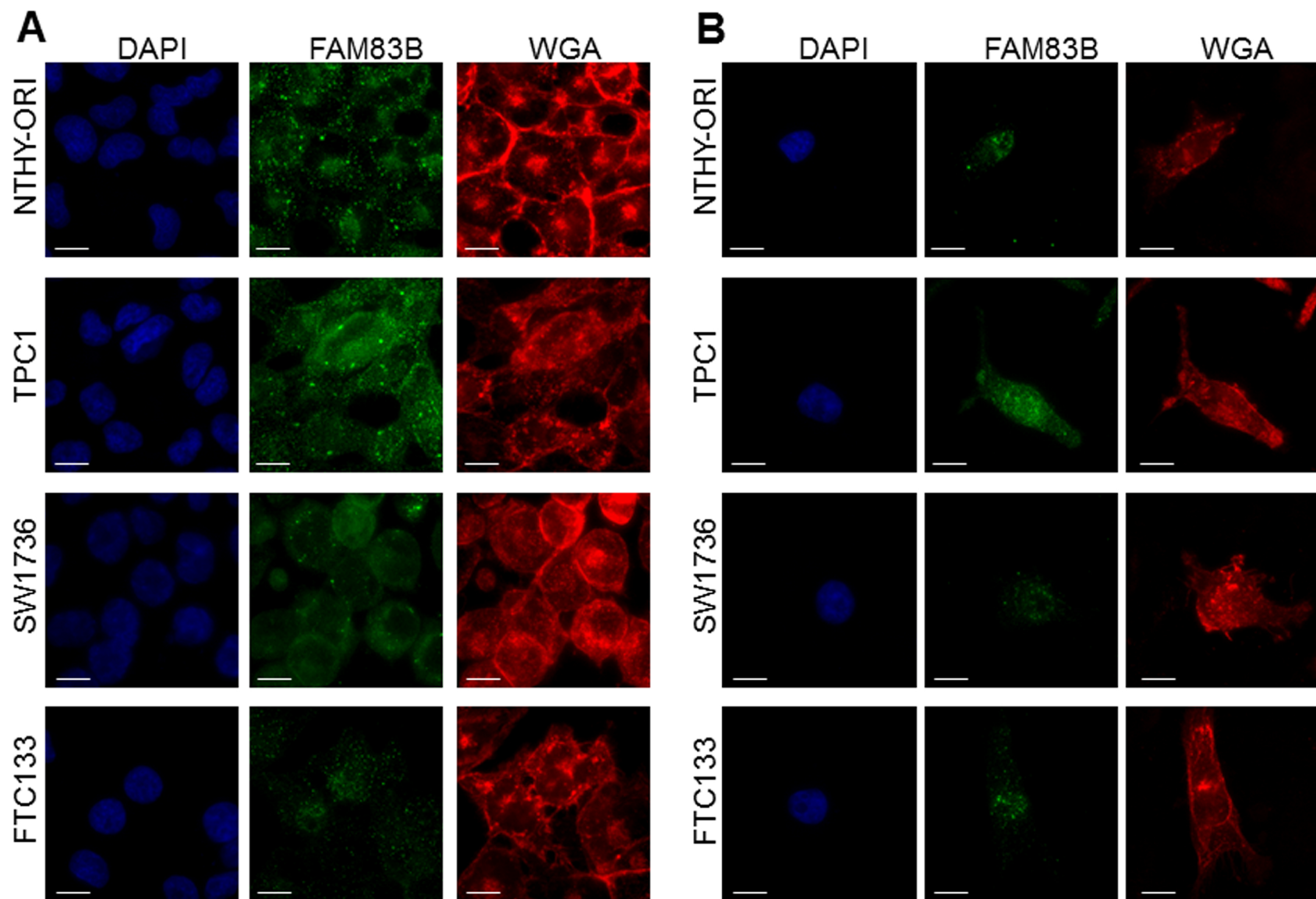
Supplementary Figure 2: FAM83B levels in different thyroid cancer cell lines.

Panel A: Representative images and densitometric analysis of western blots showing FAM83B levels in eight different normal and cancer thyroid cell lines. Two different exposure times are presented to better appreciate the differences among high-FAM and low-FAM expressing cells. Full-length blot images are shown in **Supplementary Figure 8**. **Panel B:** FAM83B densitometric quantification of the eight cell lines grouped by tissue of origins.

Statistical analysis: A-B, Kruskal-Wallis test followed by Dunn's Multiple Comparison Test.

Supplementary Figure 3: full FAM83B immunofluorescence images.

Representative immunofluorescence images with all channels used for Figure 5 analysis of confluent (Panel A) and migrating (Panel B) cells. DAPI was used to identify nuclear ROI while WGA was used to identify whole cell ROI. Scalebars 10 μm .



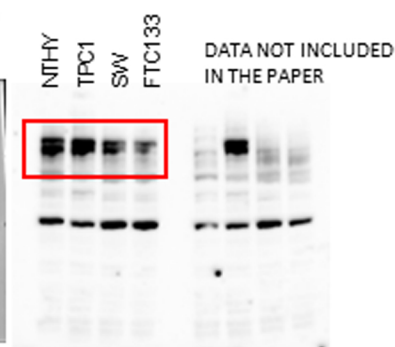
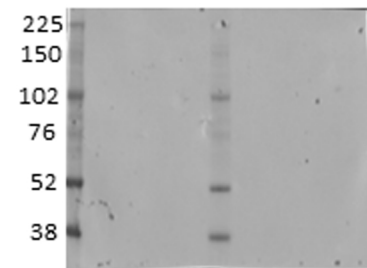
**Supplementary Figure 4:
full-length blots images.**

Left panel: full-length blots of Figure 3B
representative images.

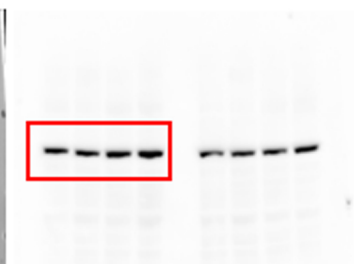
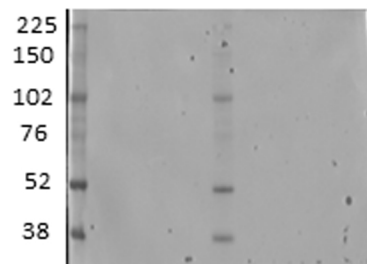
Right panel: full-length blots of Figure 3E
representative images.

The regions of these original blots used in main
figures are highlighted with red boxes.

**Check quality control Figure 3B
(long exposure)**

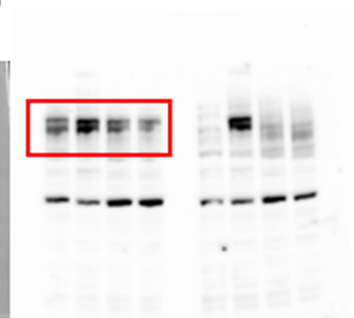
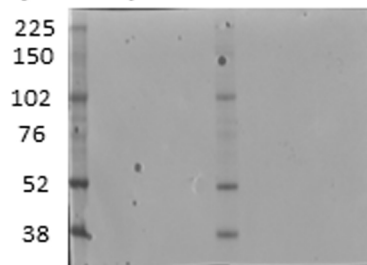


FAM83B

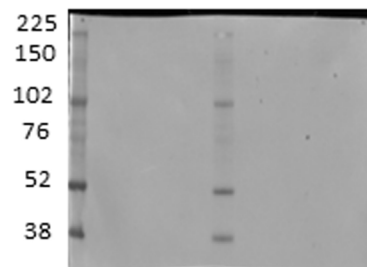


SDHA

**Check quality control Figure 3B
(short exposure)**

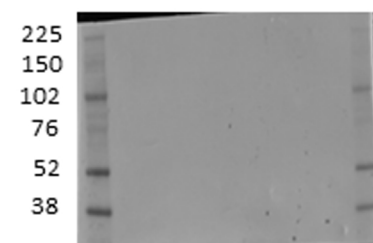


FAM83B

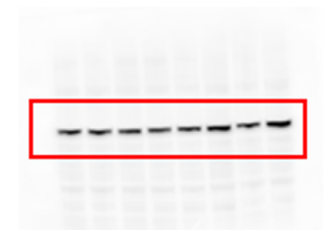
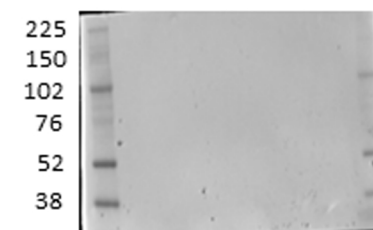


SDHA

**Check quality control Figure 3E
(long exposure)**

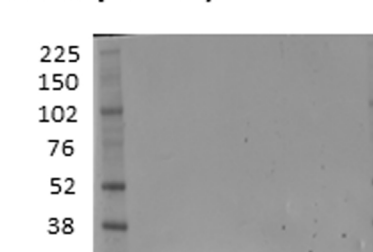


FAM83B

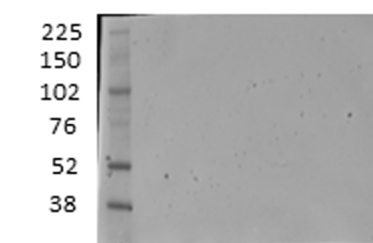


SDHA

**Check quality control Figure 3E
(short exposure)**



FAM83B



SDHA

Supplementary Figure 5: full-length-blots images.

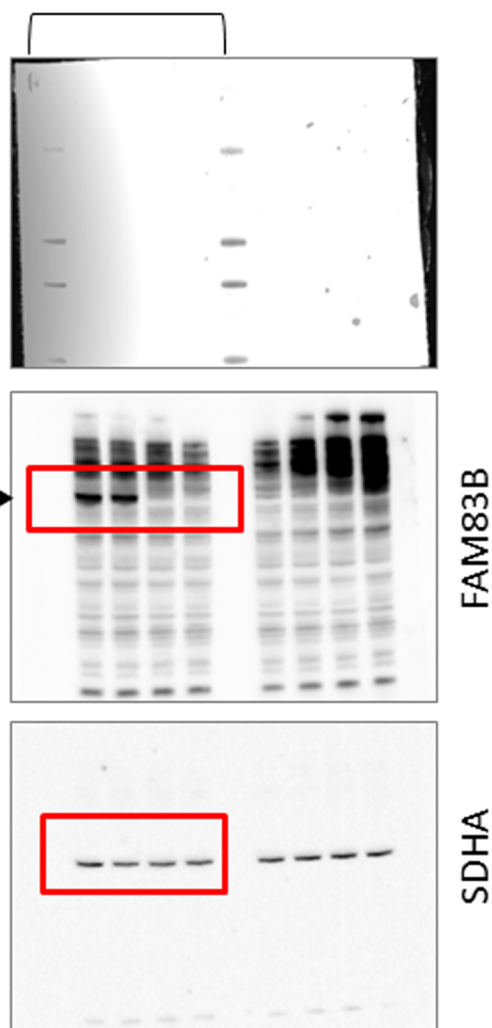
Left panel: full-length blots of Figure 6A representative images.

Middle panel: full-length agarose gel of Figure 6B representative images.

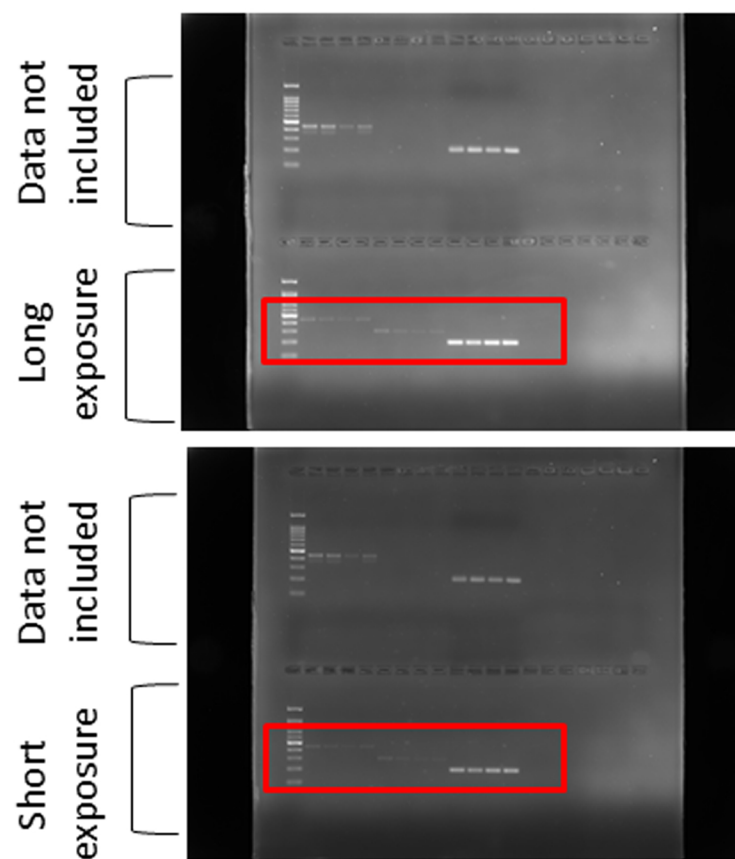
Right panel: full-length blots of Figure 6C representative images.

The regions of these original blots used in main figures are highlighted with red boxes.

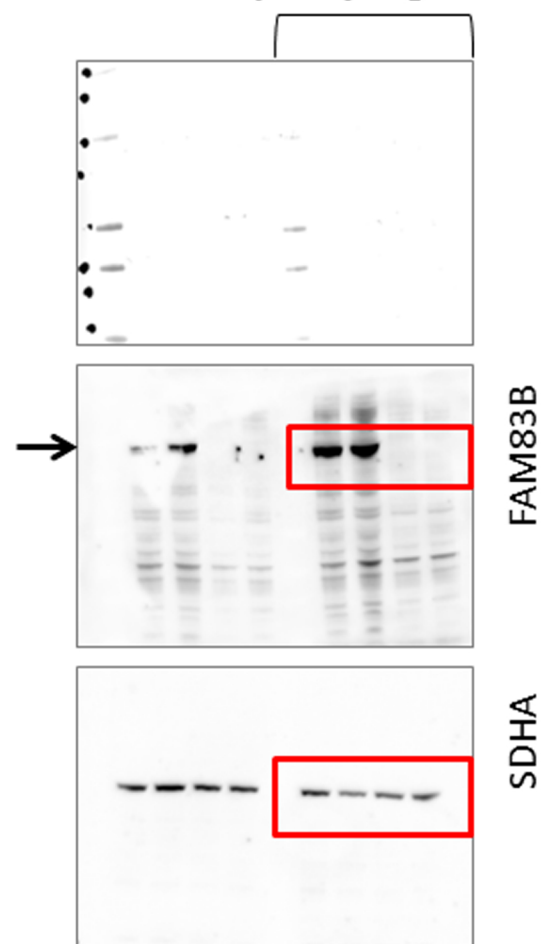
Check quality Figure 6A



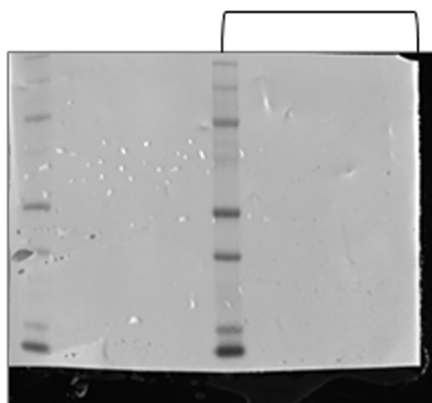
Check quality Figure 6B



Check quality Figure 6C

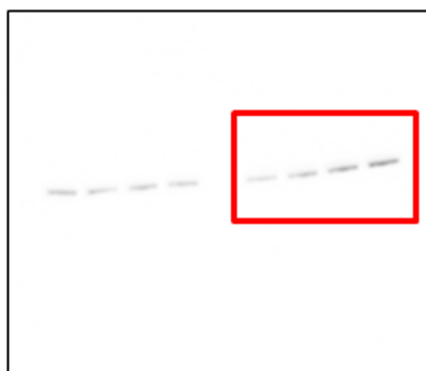


Check quality Figure 6D

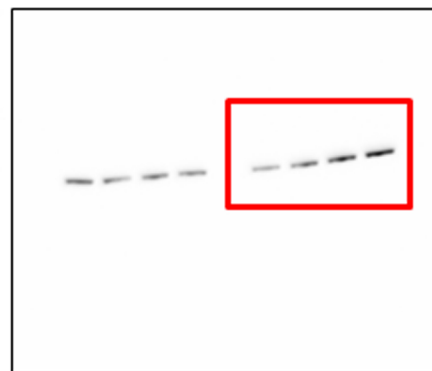


Supplementary Figure 6: full-length-blot images.
Full-length blots of Figure 6D representative images.
The regions of these original blots used in main figures are highlighted with red boxes.

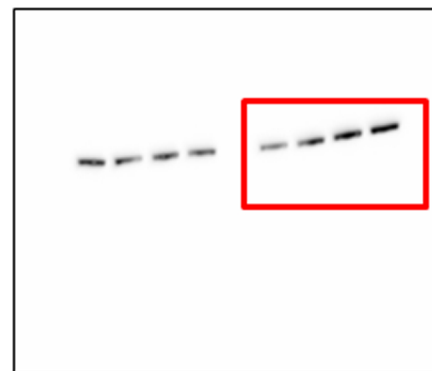
Short exposure



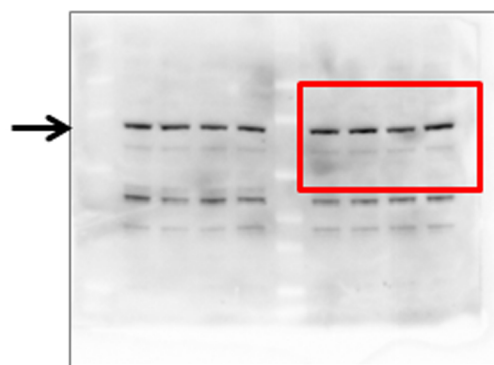
Medium exposure



Long exposure

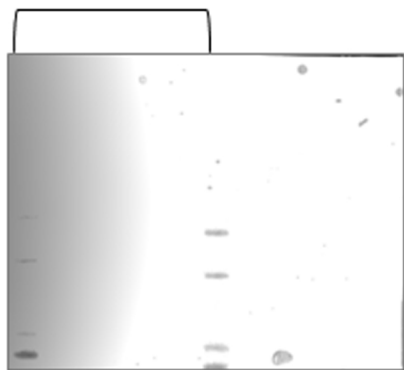


VIMENTIN

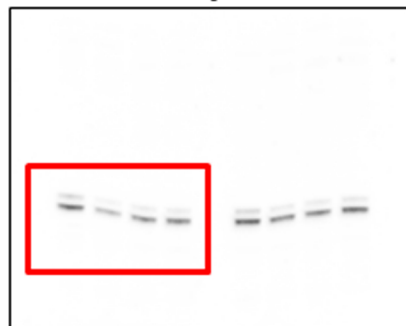


SDHA

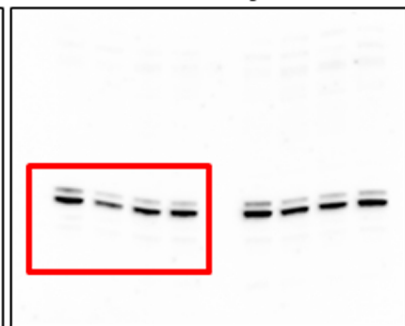
Check quality Figure 6E



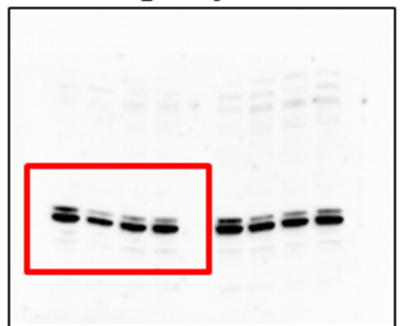
Short exposure



Medium exposure



Long exposure

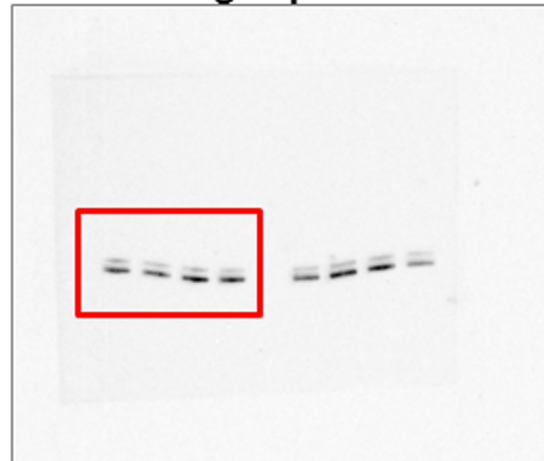


P-ERK

Short exposure



Long exposure



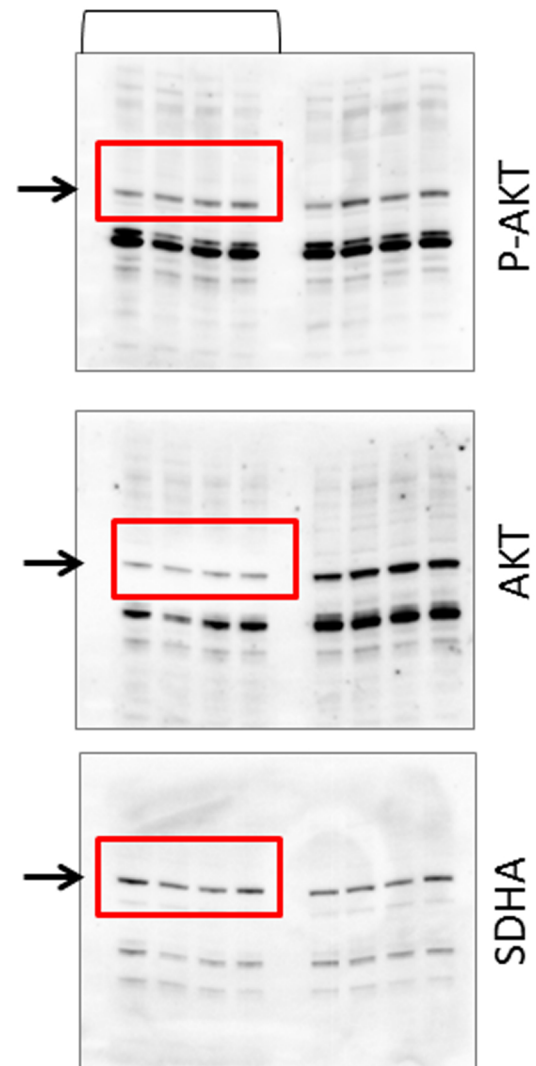
ERK

Supplementary Figure 7: full-length-blot images.

Full-length blots of Figure 6E representative images.

The regions of these original blots used in main figures are highlighted with red boxes.

Check quality Figure 6E



Supplementary Figure 8: full-length-blots images.
Full-length blots of Supplementary Figure 2A representative images.
The regions of these original blots used in main figures are highlighted with red boxes.

Check quality Supplementary Figure 2A

