

# Supplementary Information

## Medium-throughput zebrafish optogenetic platform identifies deficits in subsequent neural activity following brief early exposure to cannabidiol and $\Delta^9$ -tetrahydrocannabinol

Richard Kanyo<sup>1,2</sup>, Md Ruhul Amin<sup>2</sup>, Laszlo F. Locskai<sup>1,2</sup>, Danika D. Bouvier<sup>2</sup>,  
Alexandria M. Olthuis<sup>2</sup>, W. Ted Allison<sup>1,2,3</sup>, and Declan W. Ali<sup>2,\*</sup>

<sup>1</sup> Centre for Prions & Protein Folding Disease, University of Alberta, Edmonton AB, T6G 2M8

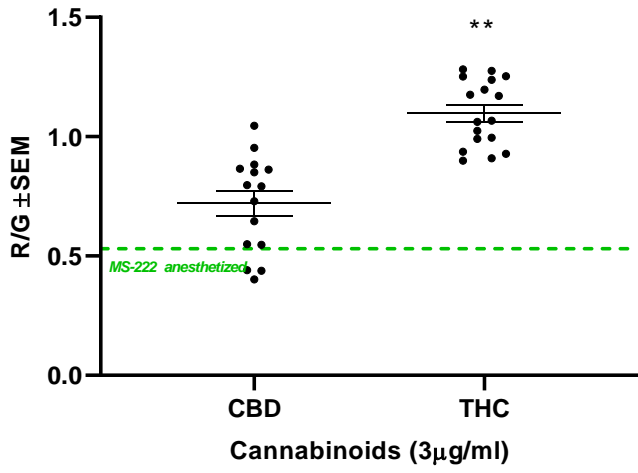
<sup>2</sup> Department of Biological Sciences, University of Alberta, Edmonton AB, T6G 2E9

<sup>3</sup> Department of Medical Genetics, University of Alberta, Edmonton AB, T6G 2H7, Canada

\* Author for correspondence (phone: (780) 492-6094; fax: (780) 492-9234; email: [declan.ali@ualberta.ca](mailto:declan.ali@ualberta.ca))

Fig. S1

CaMPARI Activity



Locomotor Activity

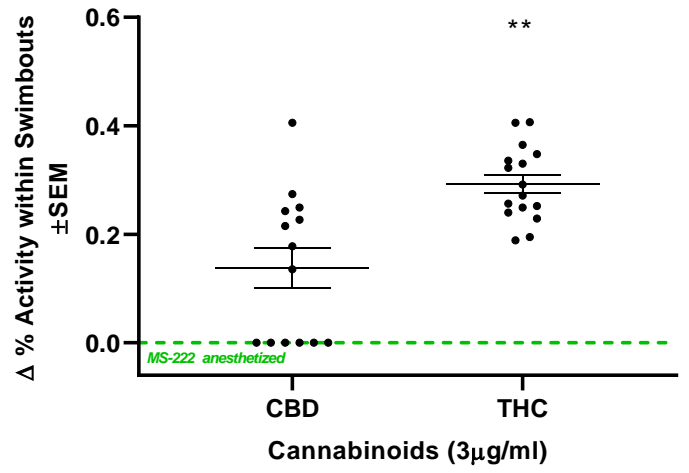


Fig. S2

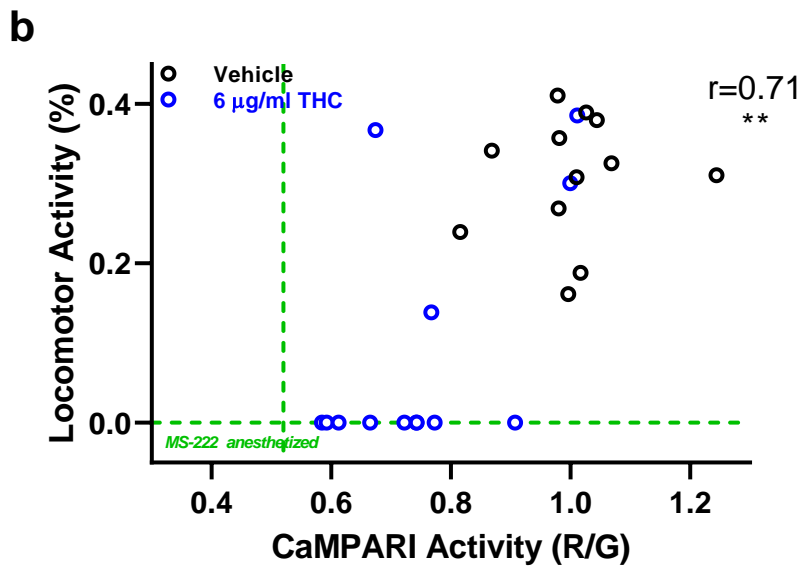
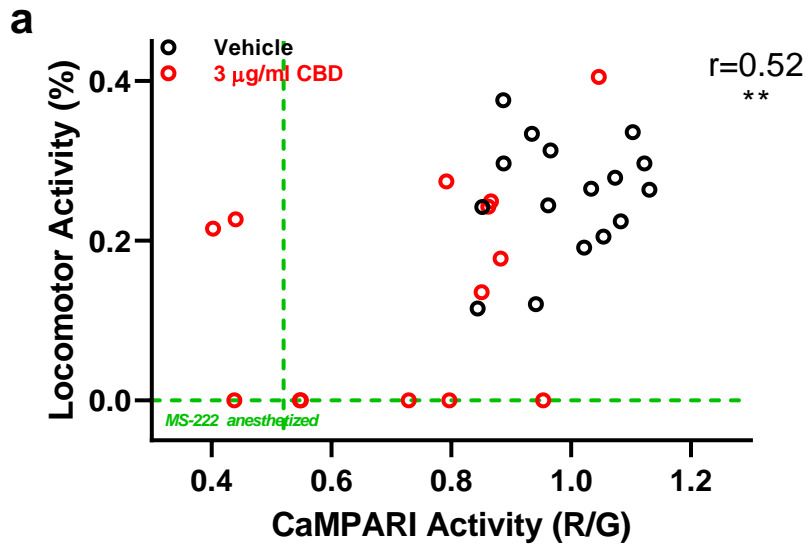
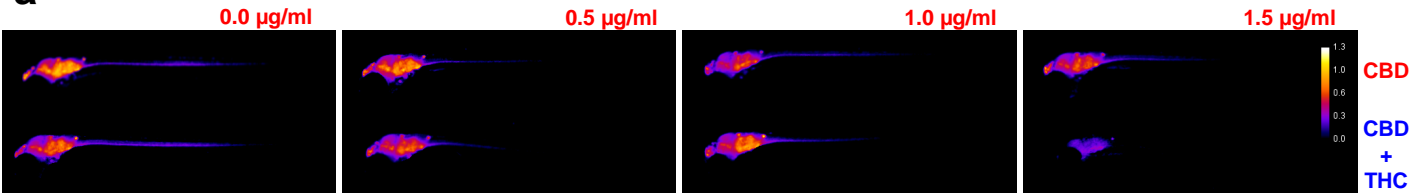
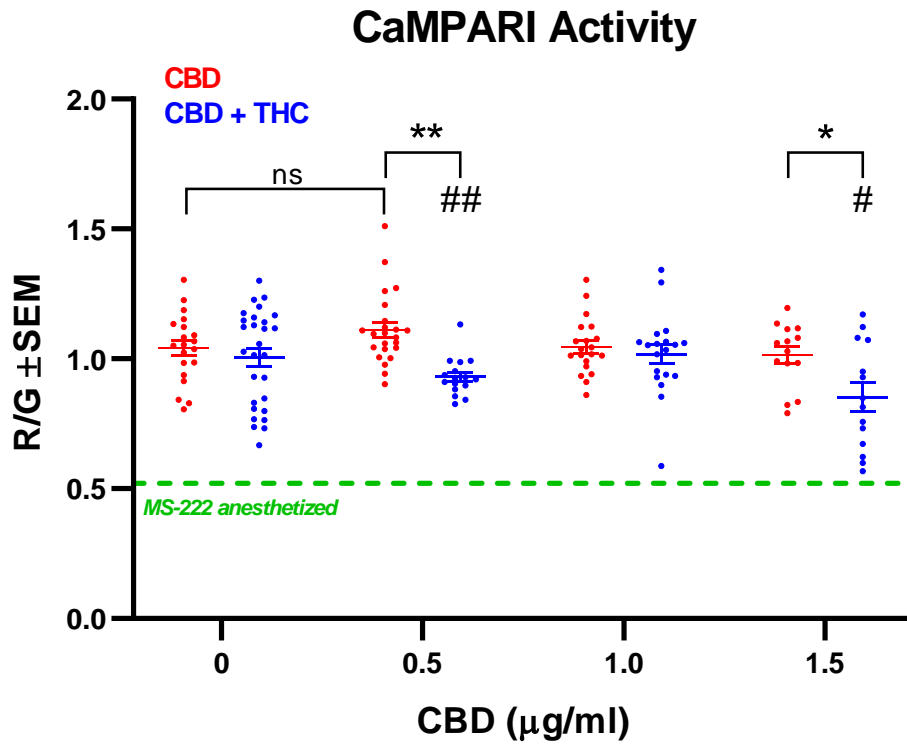


Fig. S3

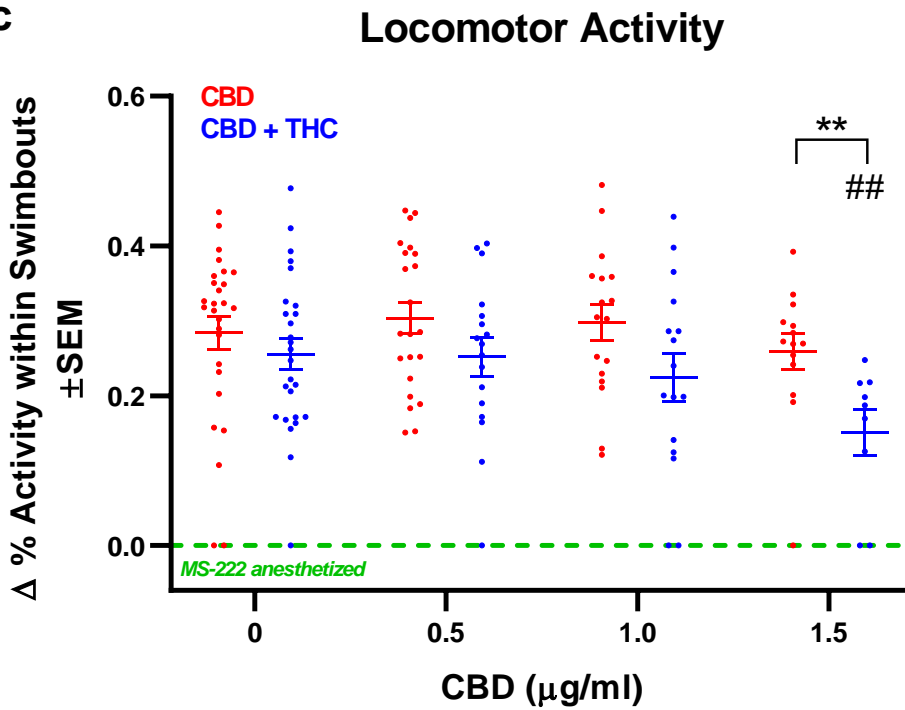
a



b



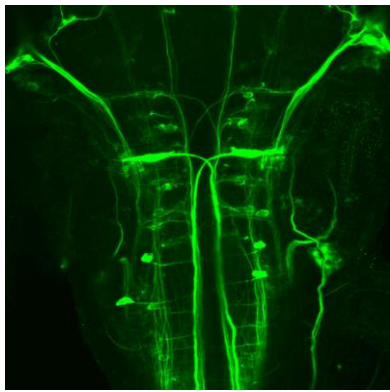
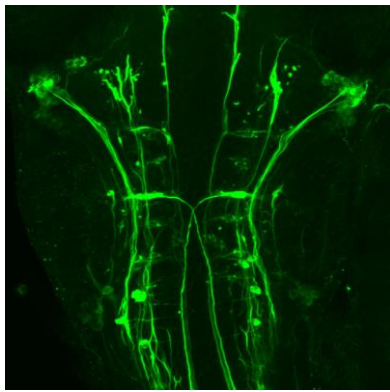
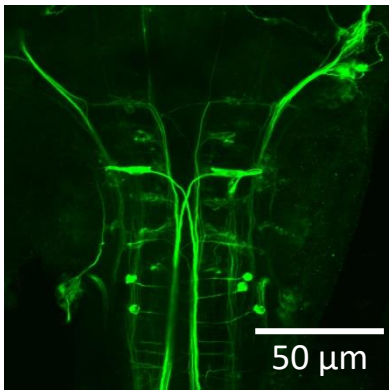
c



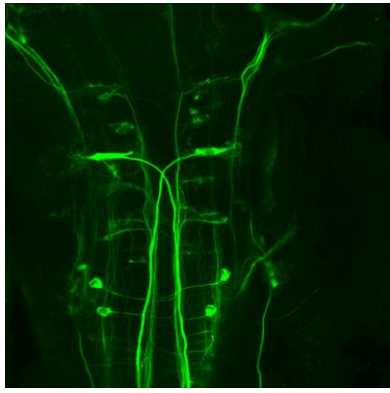
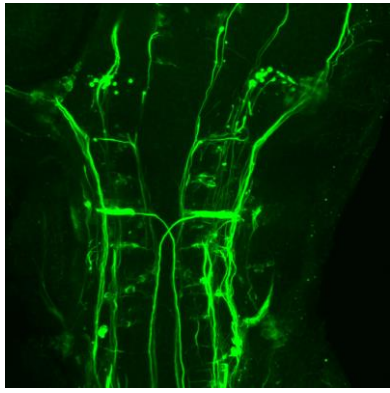
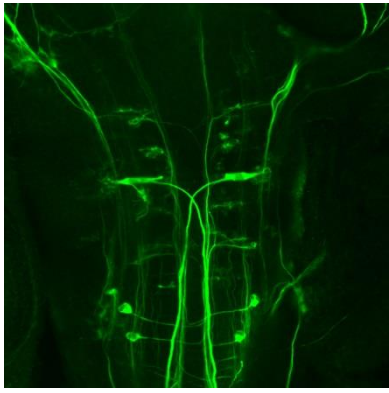
**Fig. S4**

**CBD**    **THC**  
2 µg/ml    2 µg/ml

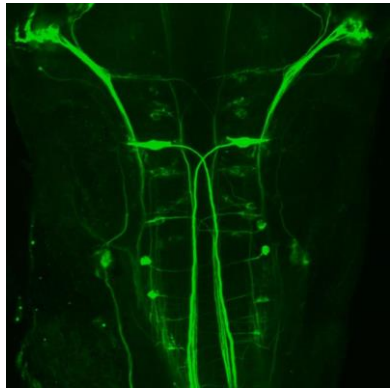
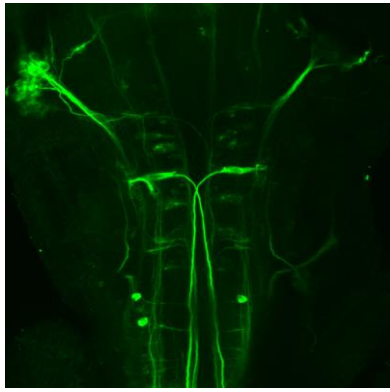
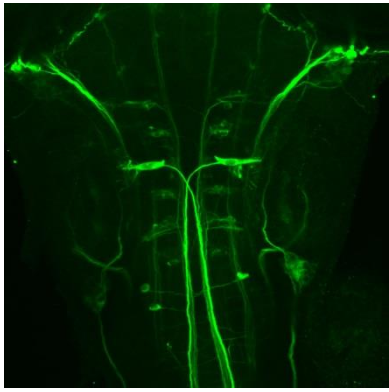
-    -



+    -



-    +



+    +

