

Inhibition of autophagic flux differently modulates cannabidiol-induced death in 2D and 3D glioblastoma cell cultures

Vladimir N. Ivanov, Peter W. Grabham, Cheng-Chia Wu and Tom K. Hei

Center for Radiological Research, Department of Radiation Oncology,
Vagelos College of Physicians and Surgeons, Columbia University, New York, NY 10032

Correspondence to: Vladimir N. Ivanov, E-mail address: vni3@cumc.columbia.edu

Keywords: glioblastoma; cannabidiol; radiotherapy; autophagy, 3D glioma culture

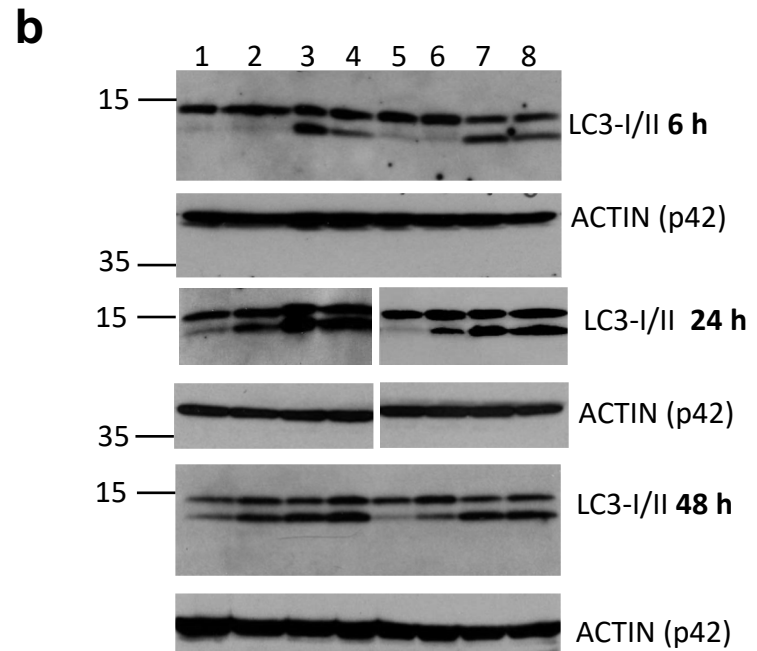
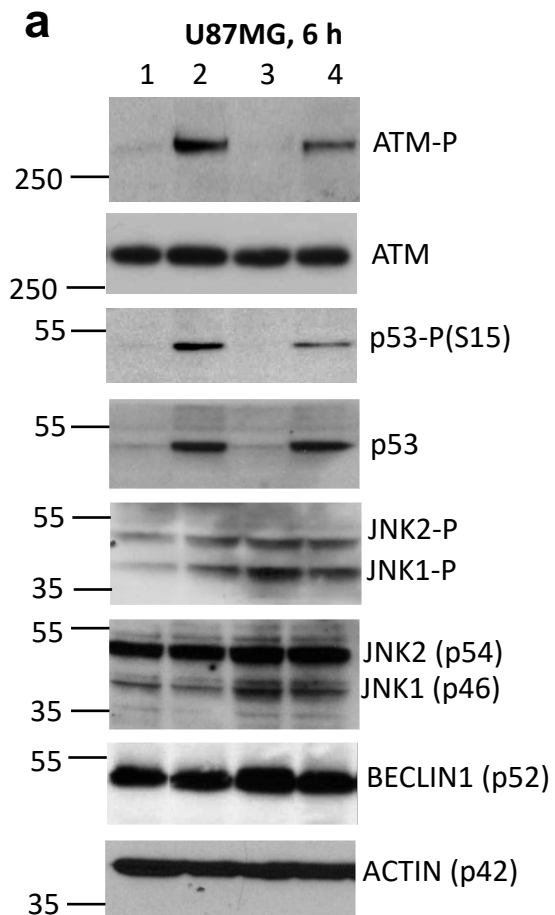


Figure S1. The originals of Western blots for Figure 1a and 1b.

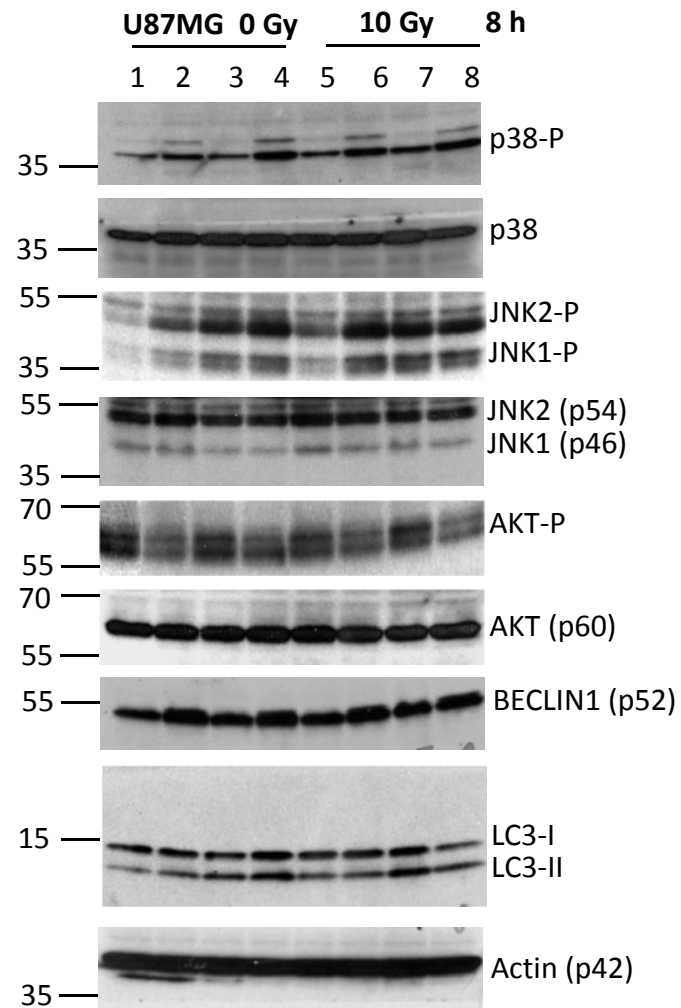


Figure S2. The originals of Western blots for Figure 2a.

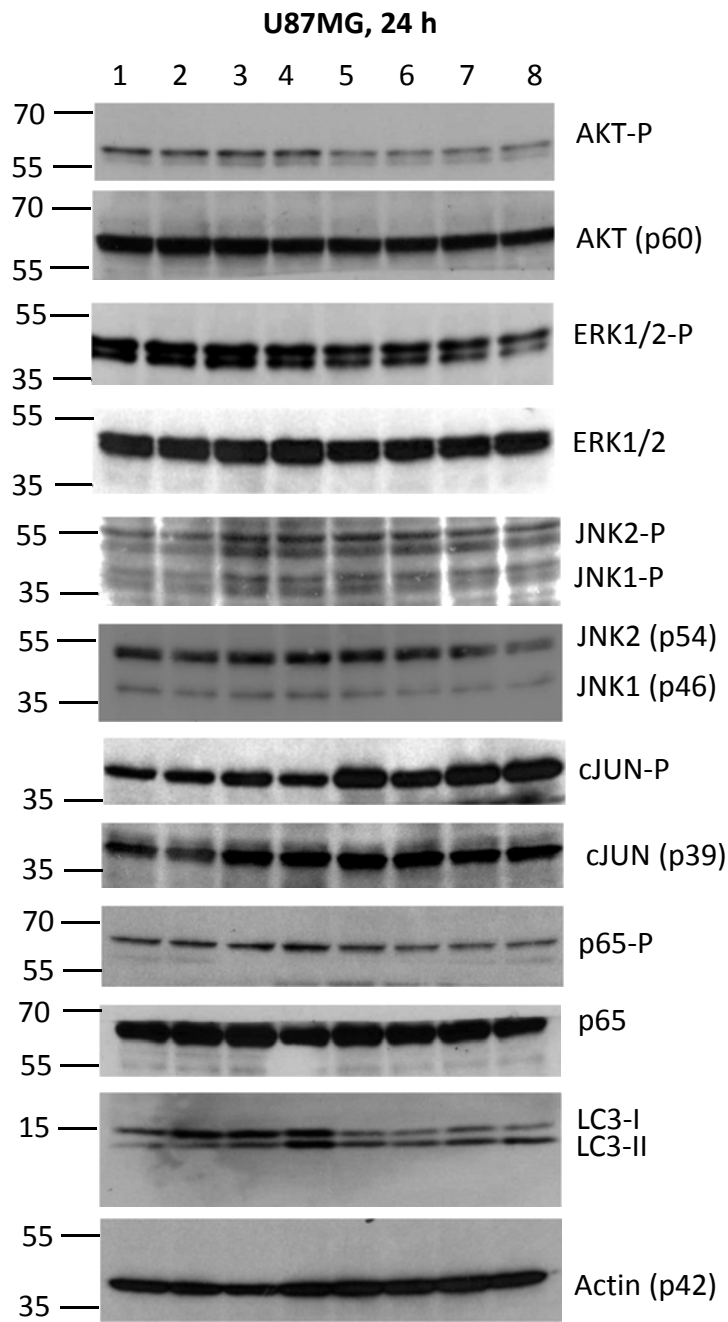


Figure 3a

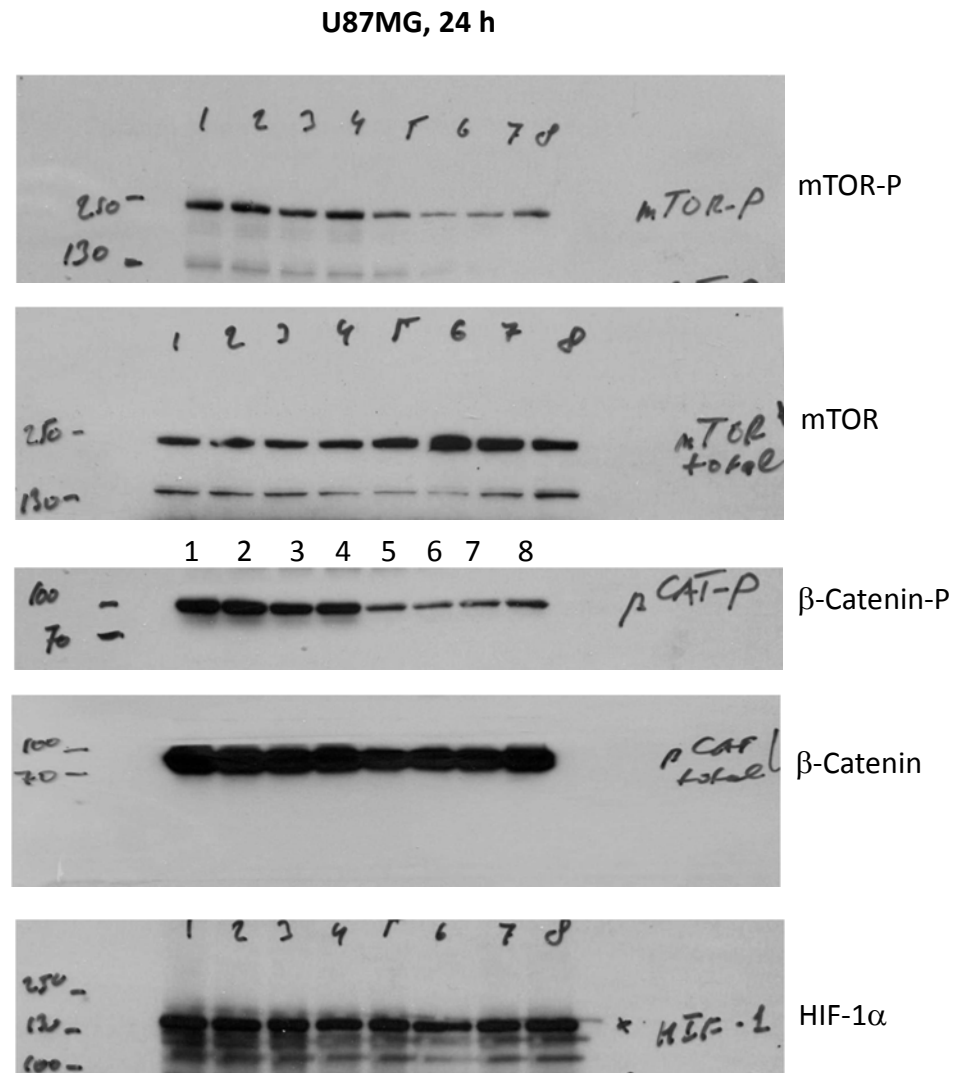


Figure 3a (addition)

Figure S3a. The originals of Western blots for Figure 3a.

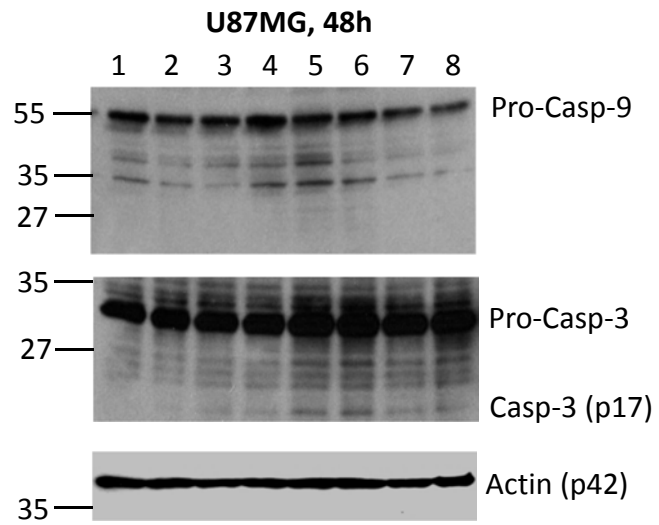


Figure 3b

Figure S3b. The originals of Western blots for Figure 3b.

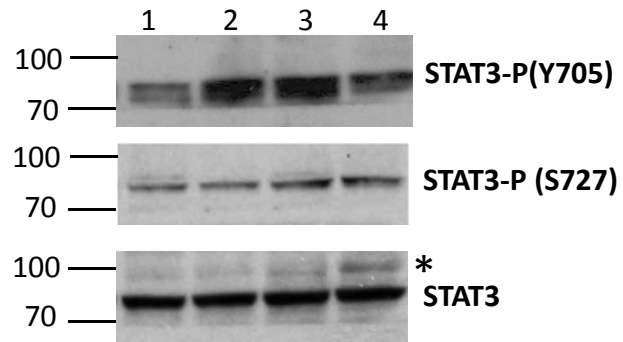


Figure 4f

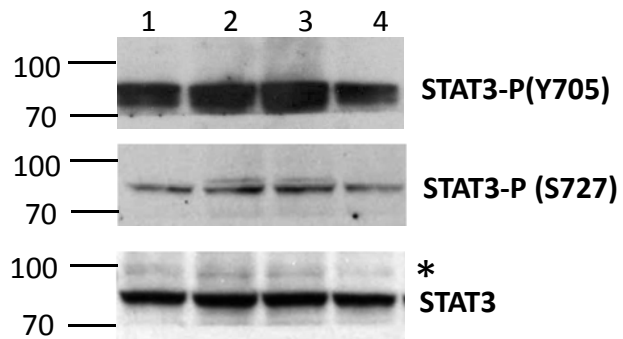


Figure 4g

Figure S4. The originals of Western blots for Figure 4f and 4g demonstrate total and phosphorylated STAT3 levels. Star indicates non-specific band.

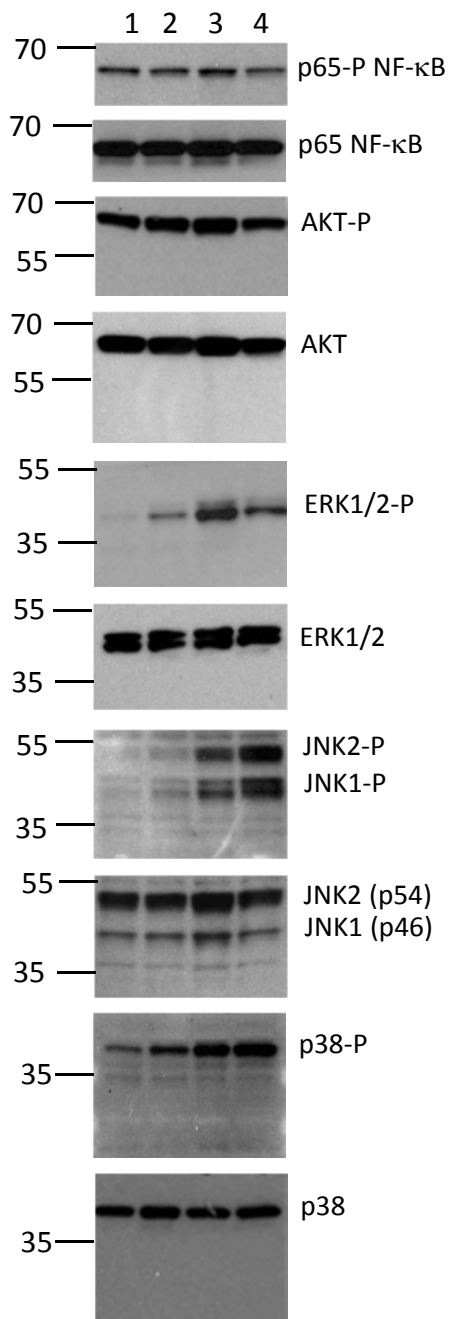


Figure 6a

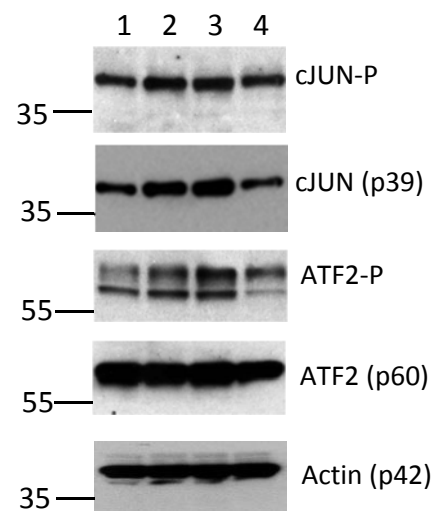


Figure 6a

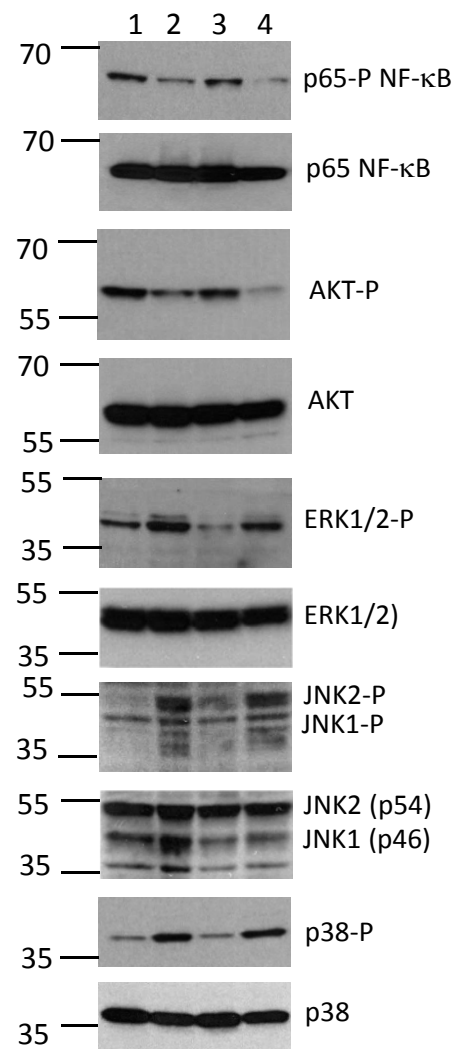


Figure 6b

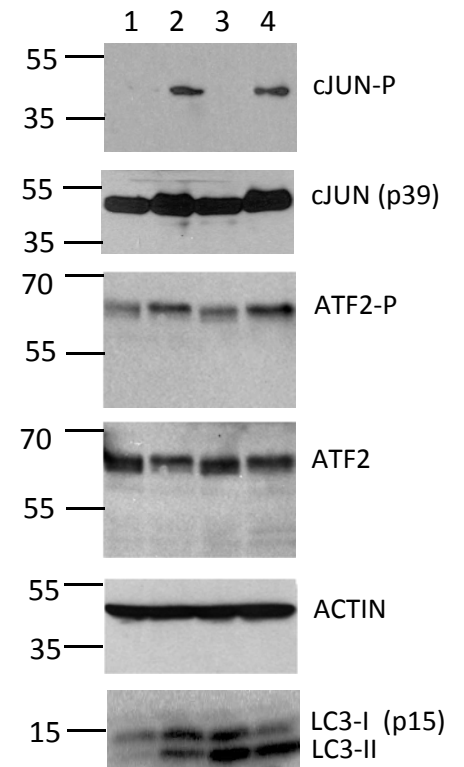


Figure 6b

Figure S6. The originals of Western blots for Figure 6. 24 h after treatment (Figure 6b), JNK1/2-P demonstrates increased levels of low molecular weight products, probably, as a result of degradation.

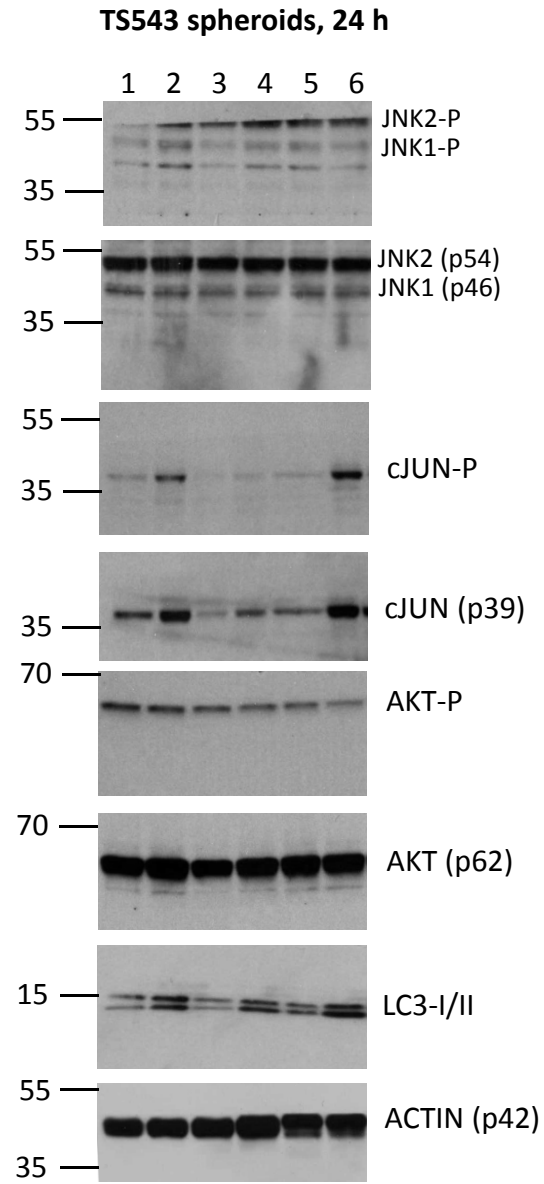


Figure S7. The originals of Western blots for Figure 7a.

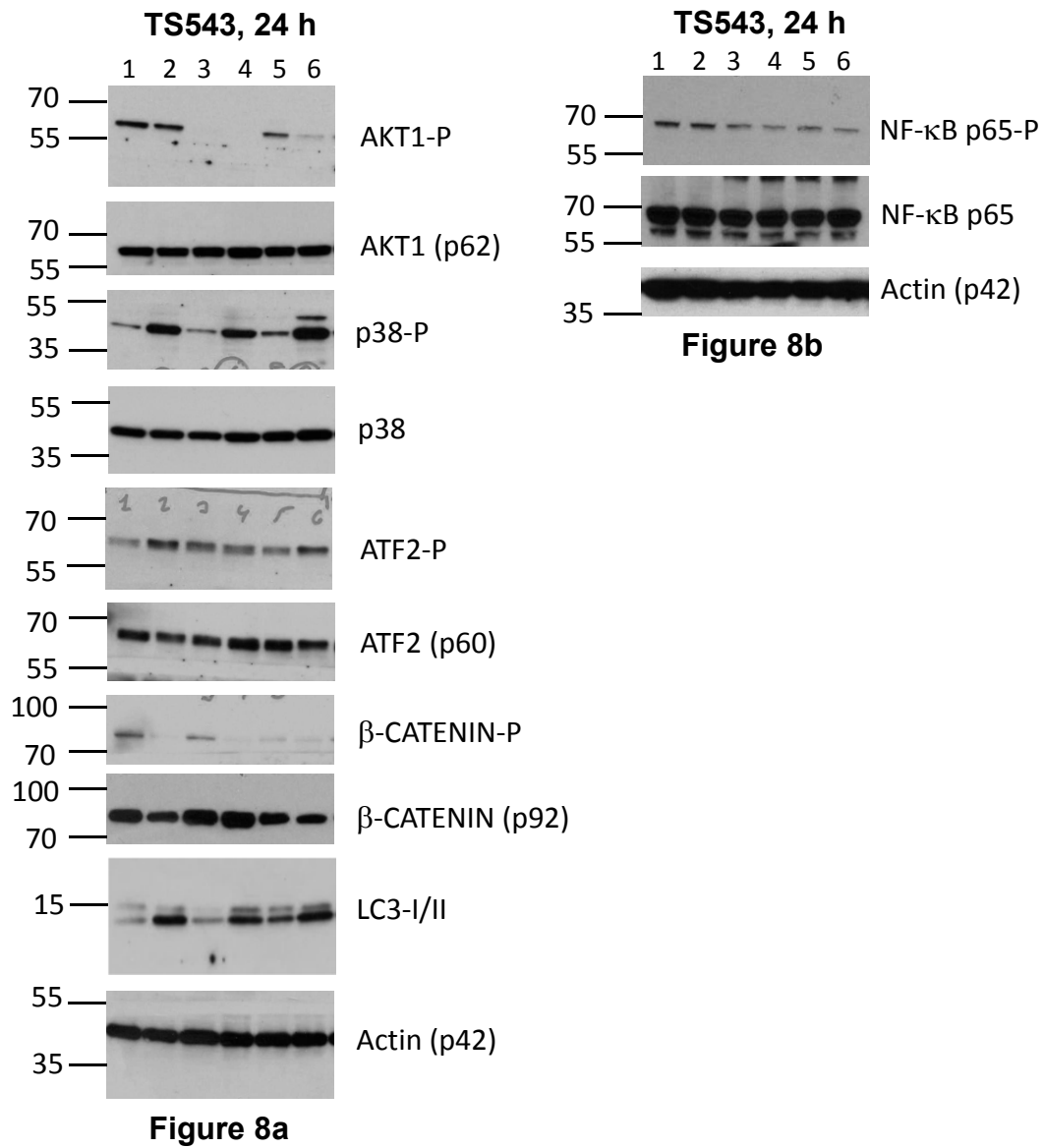


Figure S8. The originals of Western blots for Figure 8a and 8b.

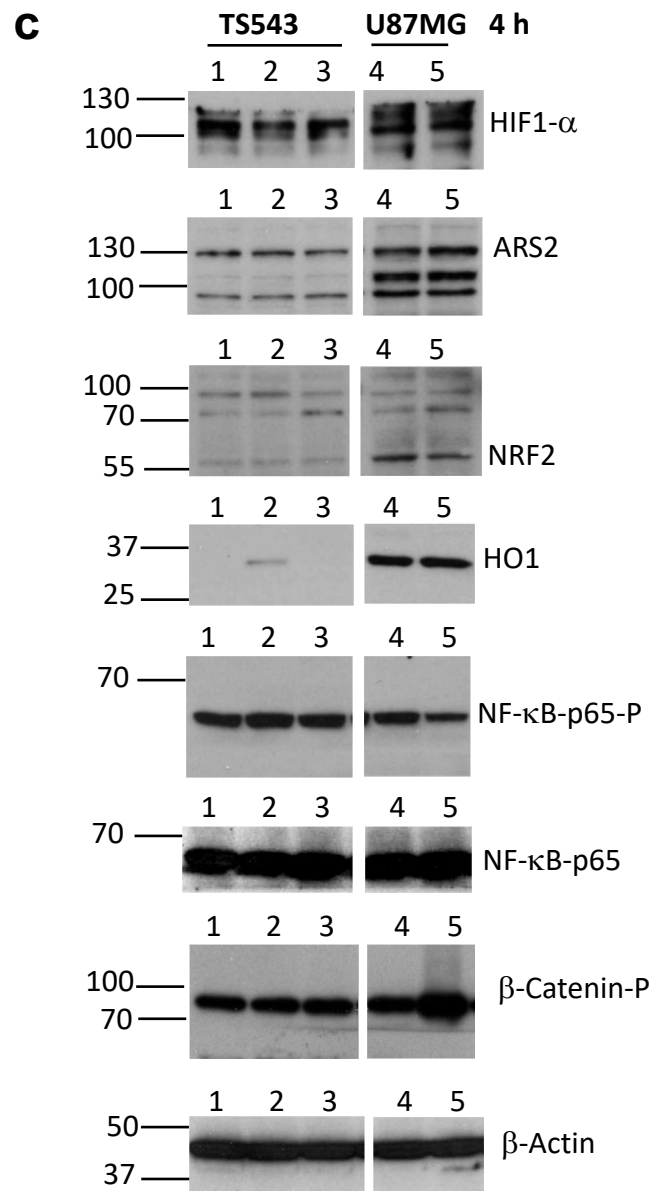


Figure S10. The originals of Western blots for Figure 10c. The center part of the original images contained data for protein samples after additional treatment, which was not used in the current study. It was fixed by removing non-used lanes in TS543 samples.