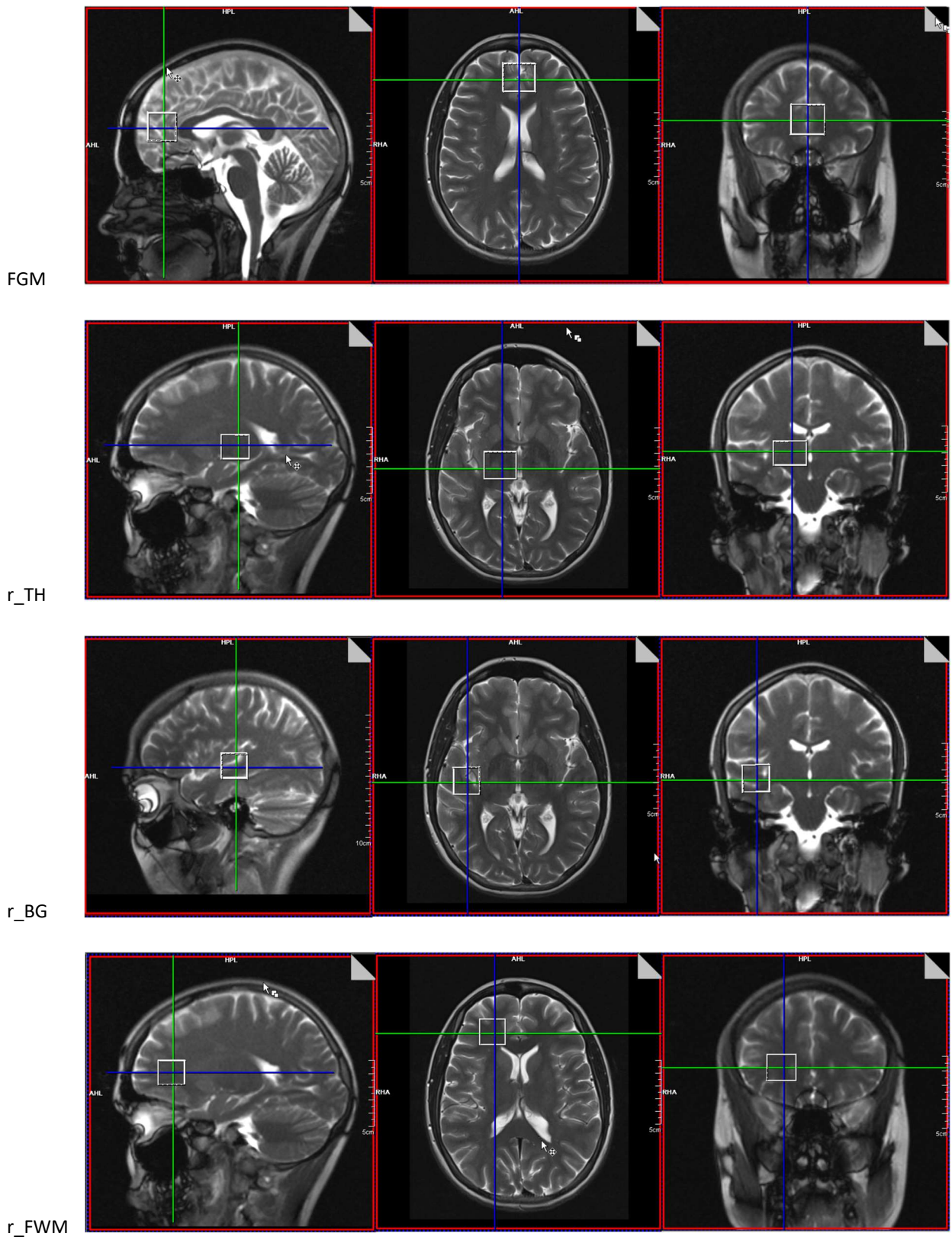


Impact of cannabis use on brain metabolism using ^{31}P and ^1H magnetic resonance spectroscopy

Maximilian Fenzl¹ (ORCID 0000-0003-1011-2754) · Martin Backens¹ (ORCID 0000-0002-3414-696X) · Silviu Bodea² · Miriam Wittemann³ · Florian Werler⁴ · Jule Brielmaier⁵ · Robert Christian Wolf⁶ (ORCID 0000-0002-5358-5212) · Wolfgang Reith¹

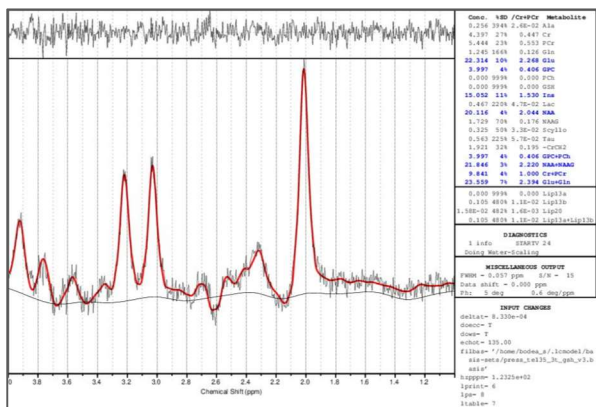
1. Institute of Neuroradiology, Saarland University, 66421 Homburg, Germany
2. Helmholtz Zentrum Munich, German Research Center for Environmental Health Institute of Biological and Medical Imaging, 85748 Munich, Germany
3. Department of Psychiatry and Psychotherapy, Saarland University, 66421 Homburg, Germany
4. Department of General Psychiatry at the Center for Psychosocial Medicine, Heidelberg University, 69115 Heidelberg, Germany
5. Department of Obstetrics and Gynecology, RKH Clinic Ludwigsburg, 71640 Ludwigsburg, Germany

Suppl_Fig5: Voxel placement for Proton MRS

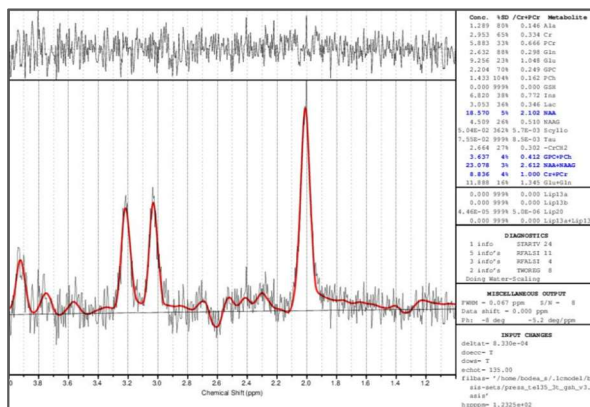


Graphical examples of voxel placement for Proton MRS for each VOI

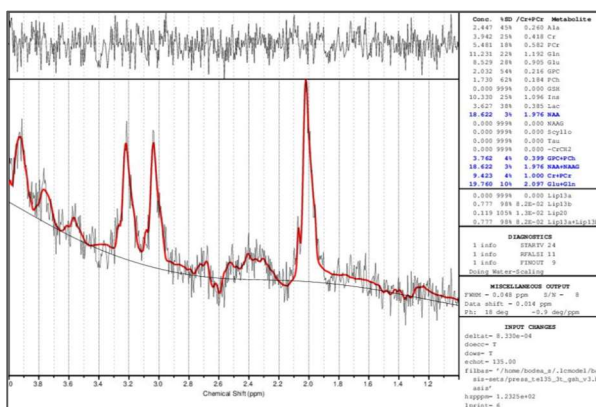
Suppl_Fig6: Evaluation of Proton Spectra – examples



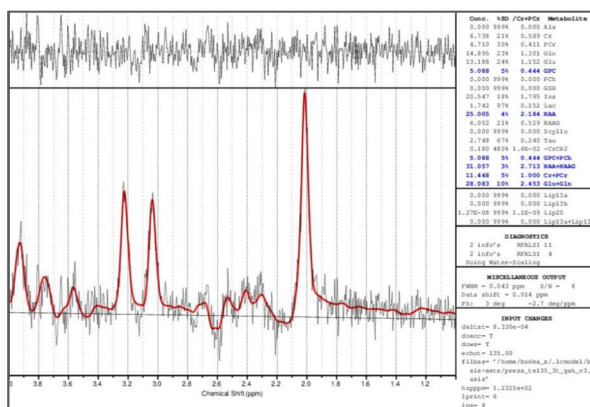
FGM



r_TH



r_TL



r_FWM

Representative proton spectra from each VOI with metabolite fit using LCModel software

Suppl_Table3: Proton MRS Data Quality - spreadsheet

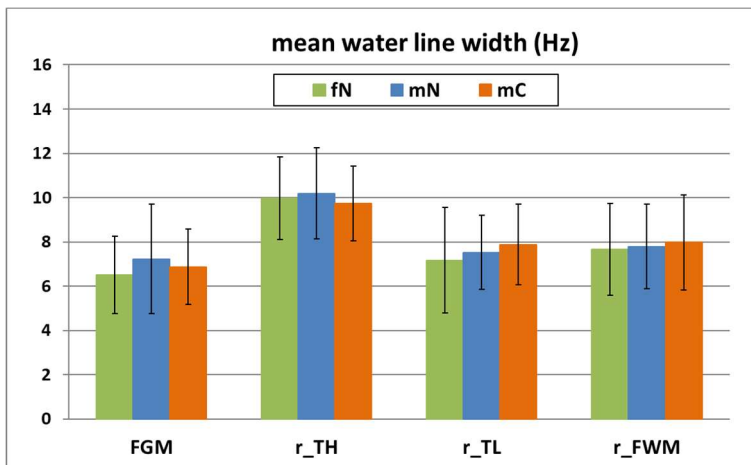
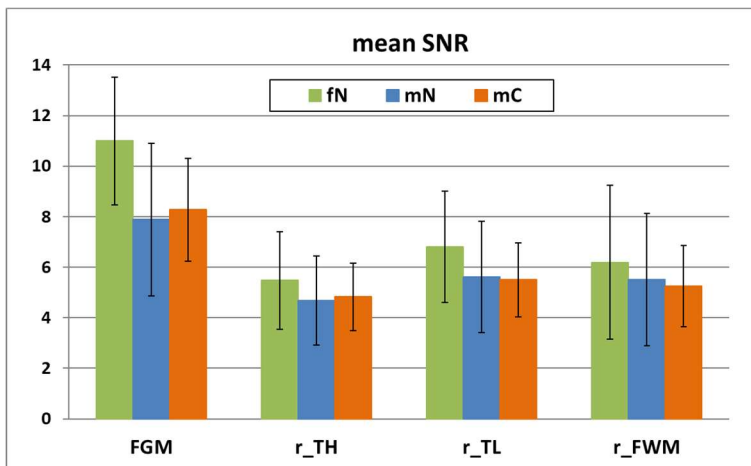
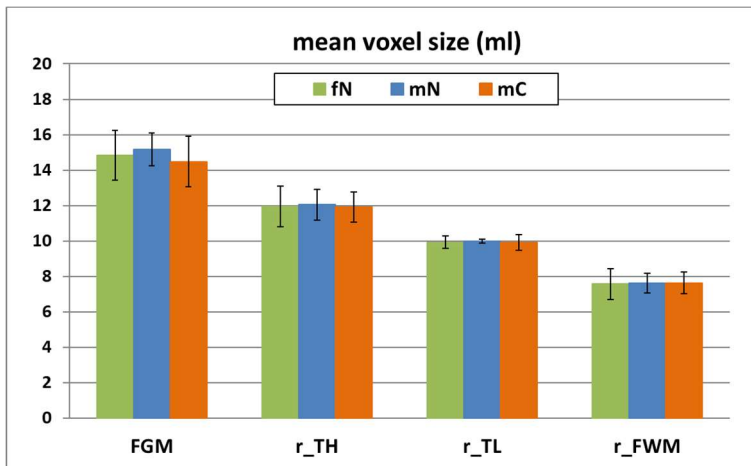
	voxel size (ml)		
mean \pm SD	fN	mN	mC
FGM	14.8 \pm 1.4	15.2 \pm 0.9	14.5 \pm 1.4
r_TH	12.0 \pm 1.2	12.0 \pm 0.9	11.9 \pm 0.9
r_TL	9.9 \pm 0.3	10.0 \pm 0.1	9.9 \pm 0.4
r_FWM	7.6 \pm 0.9	7.6 \pm 0.6	7.6 \pm 0.6

	SNR		
mean \pm SD	fN	mN	mC
FGM	11.0 \pm 2.5	7.9 \pm 3.0	8.3 \pm 2.0
r_TH	5.5 \pm 1.9	4.7 \pm 1.8	4.8 \pm 1.3
r_TL	6.8 \pm 2.2	5.6 \pm 2.2	5.5 \pm 1.5
r_FWM	6.2 \pm 3.0	5.5 \pm 2.6	5.3 \pm 1.6

	water line width (Hz)		
mean \pm SD	fN	mN	mC
FGM	6.5 \pm 1.7	7.2 \pm 2.5	6.9 \pm 1.7
r_TH	10.0 \pm 1.9	10.2 \pm 2.1	9.7 \pm 1.7
r_TL	7.2 \pm 2.4	7.5 \pm 1.7	7.9 \pm 1.8
r_FWM	7.7 \pm 2.1	7.8 \pm 1.9	8.0 \pm 2.1

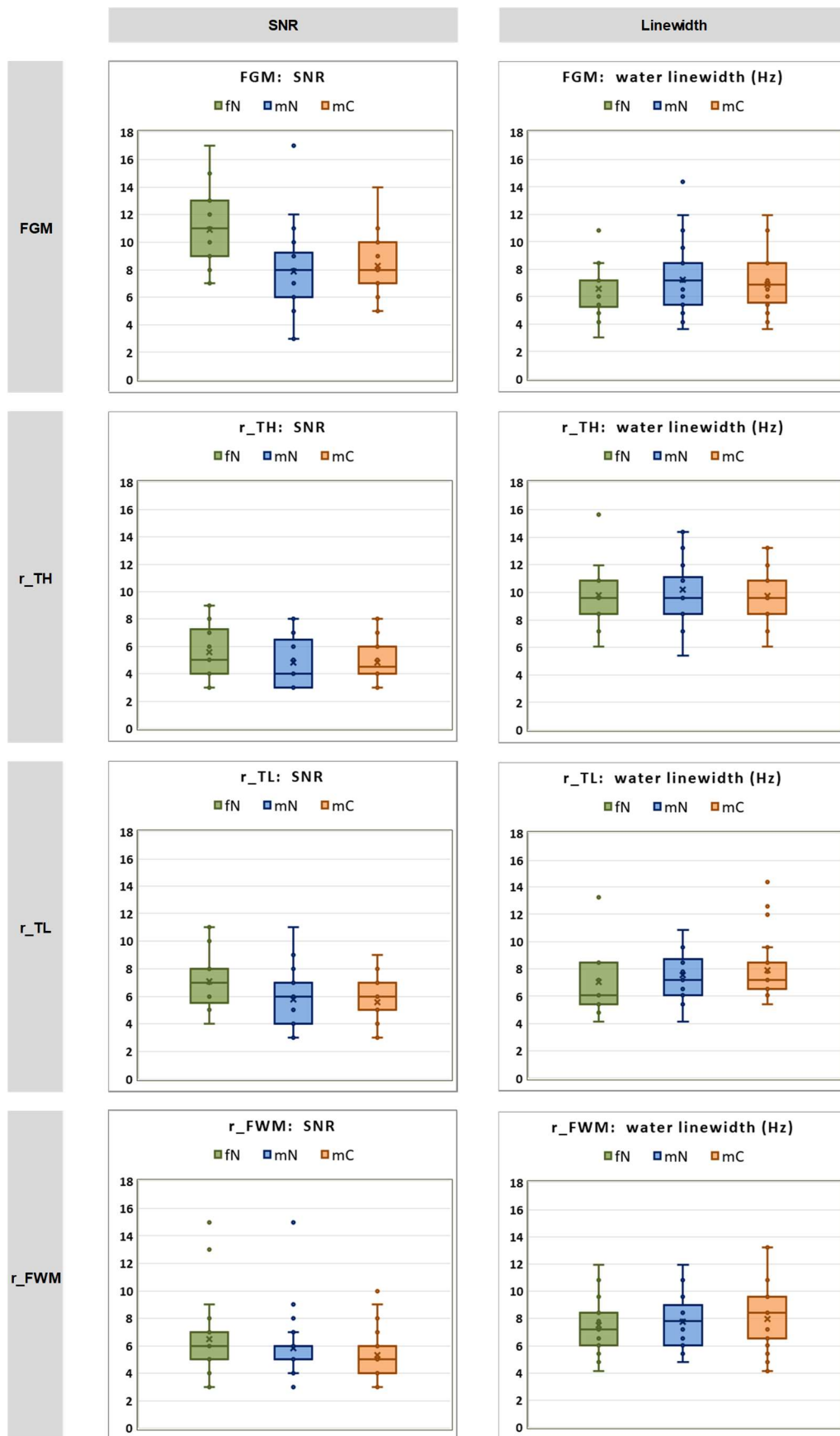
Mean values and standard deviation of voxel size, SNR and water line width of proton spectra in each VOI for the three subject groups

Suppl_Fig7: Proton MRS Data Quality – bar plot



Comparison of mean values of voxel size, SNR and water line width of proton spectra in each VOI for the three subject groups

Suppl_Fig8: Proton MRS Data Quality – box plot



Box plots for SNR and water line width of proton spectra in each VOI for the three subject groups