

# Figure.S1

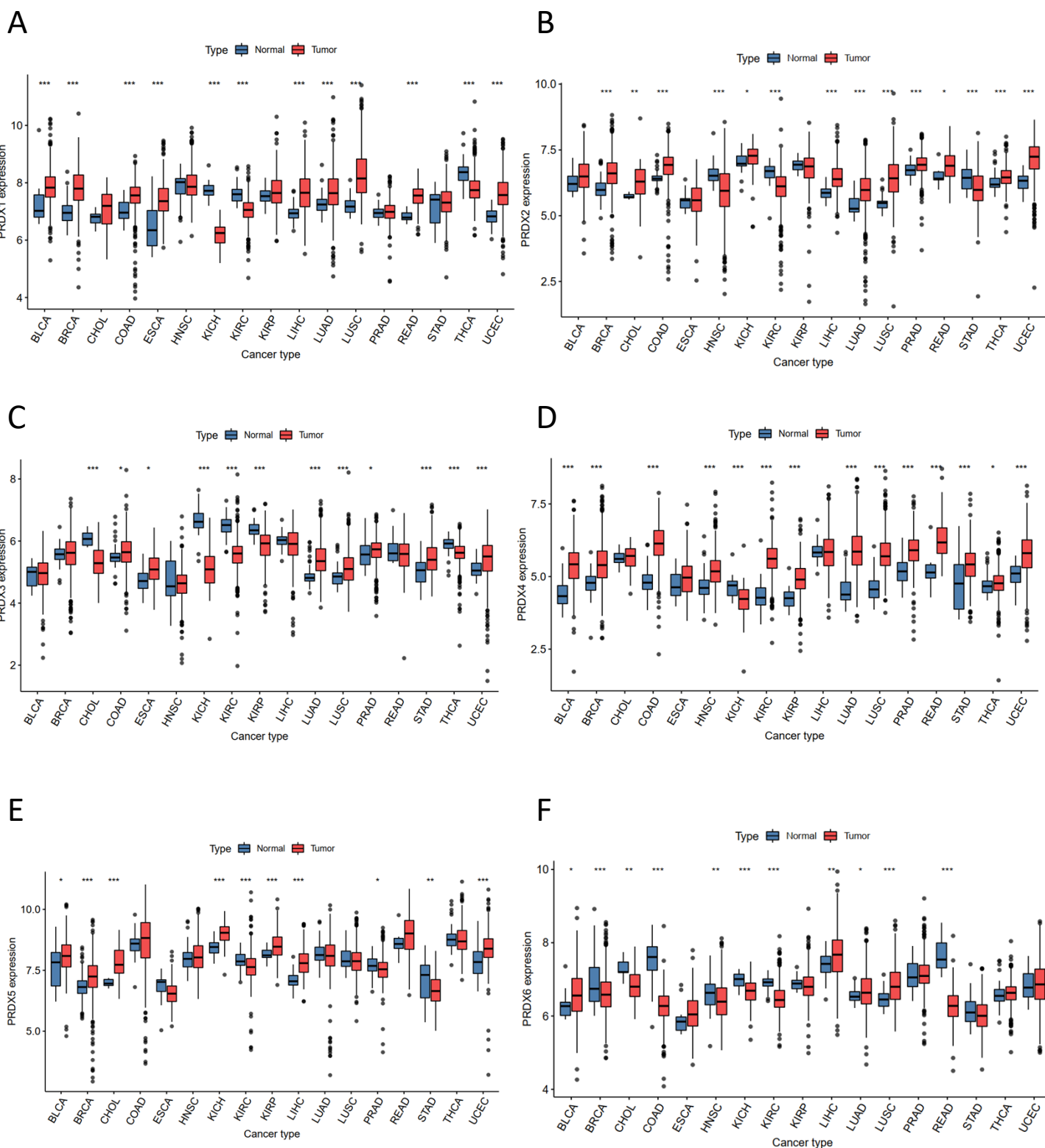
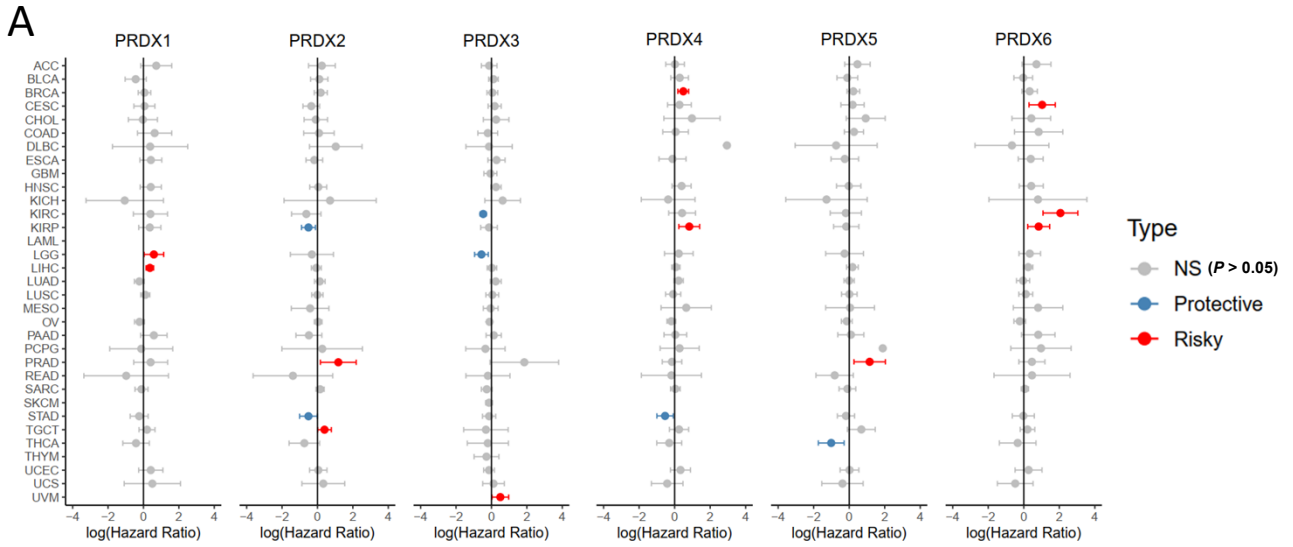
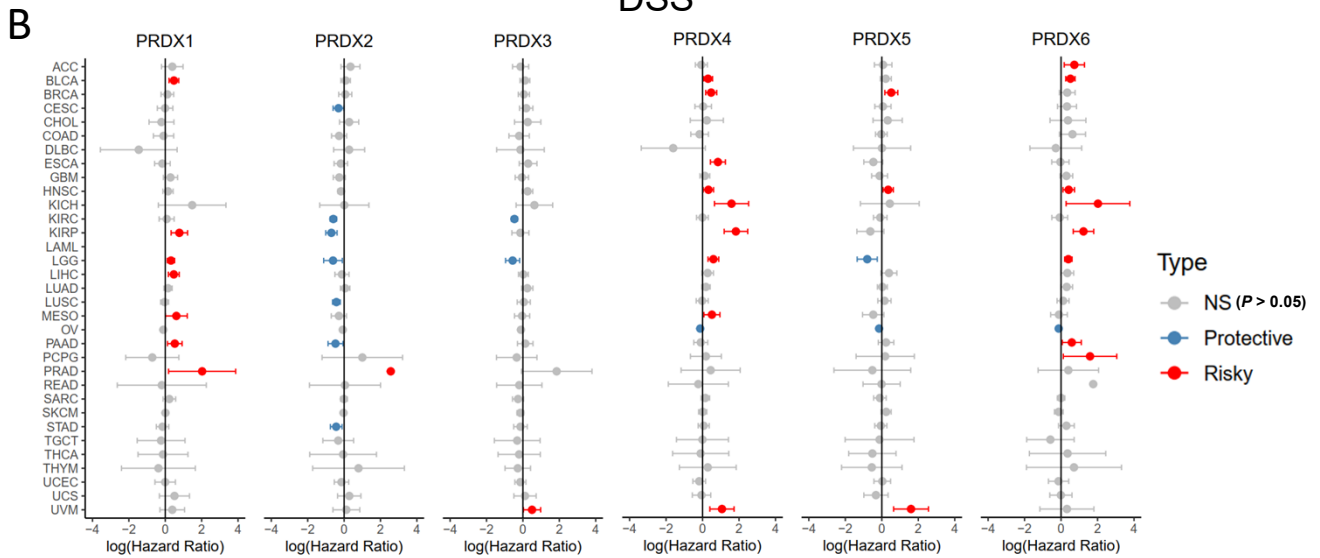


Figure.S2

DFI

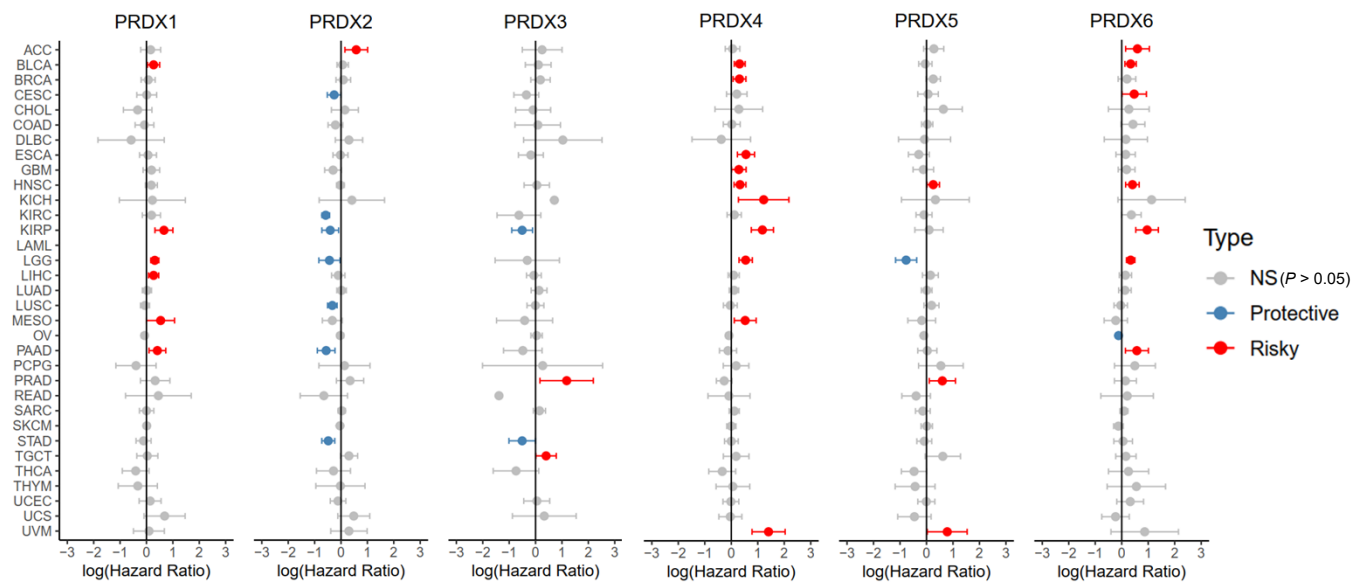


DSS



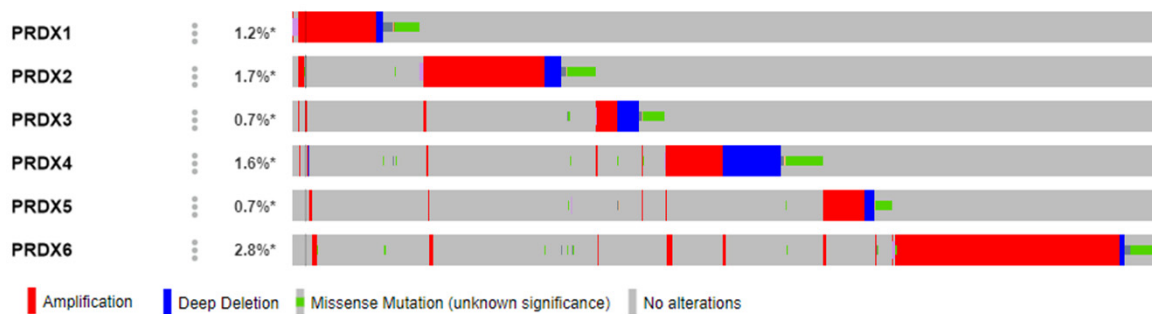
**C**

PFI



# Figure.S3

## A



## B

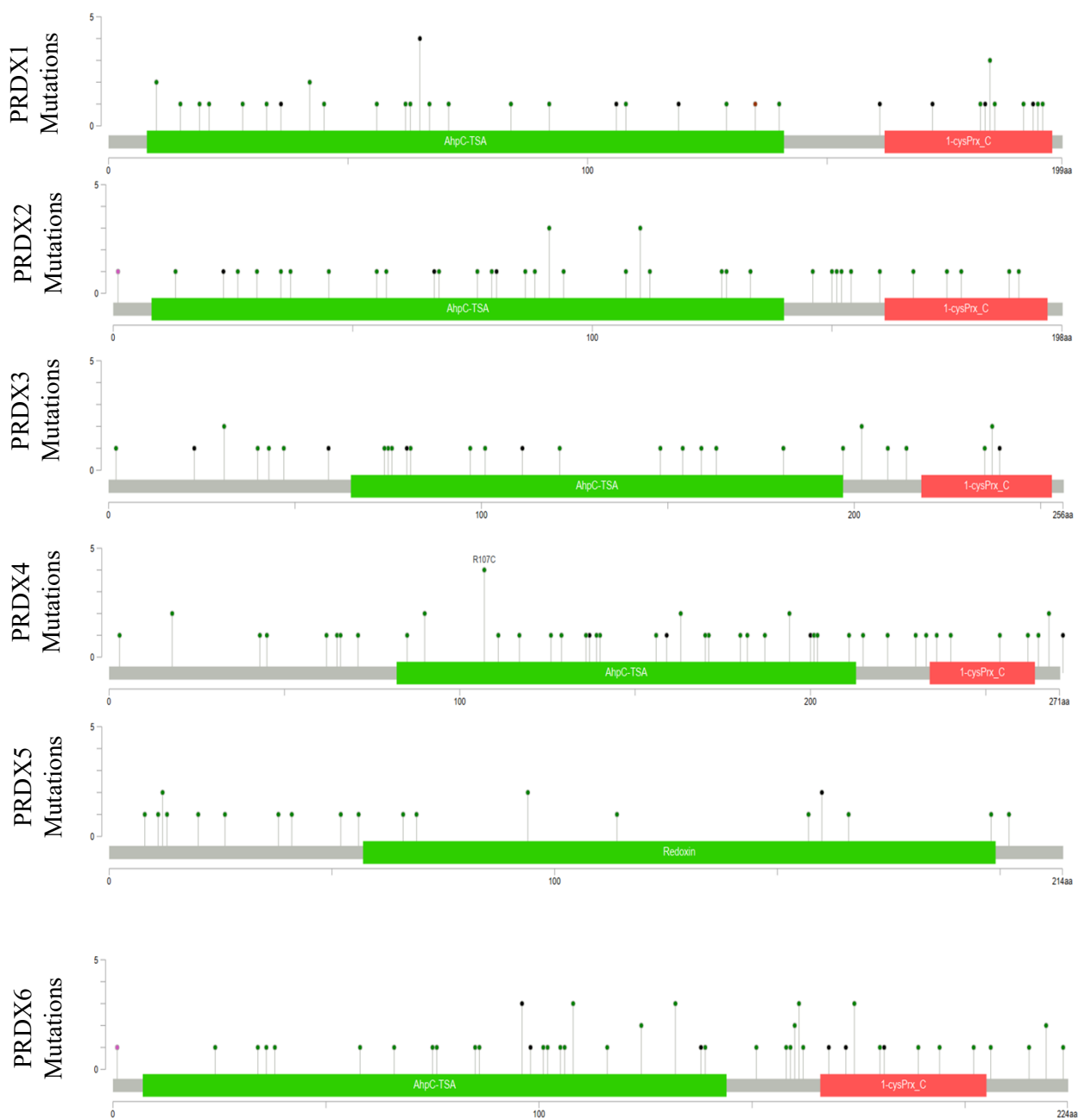
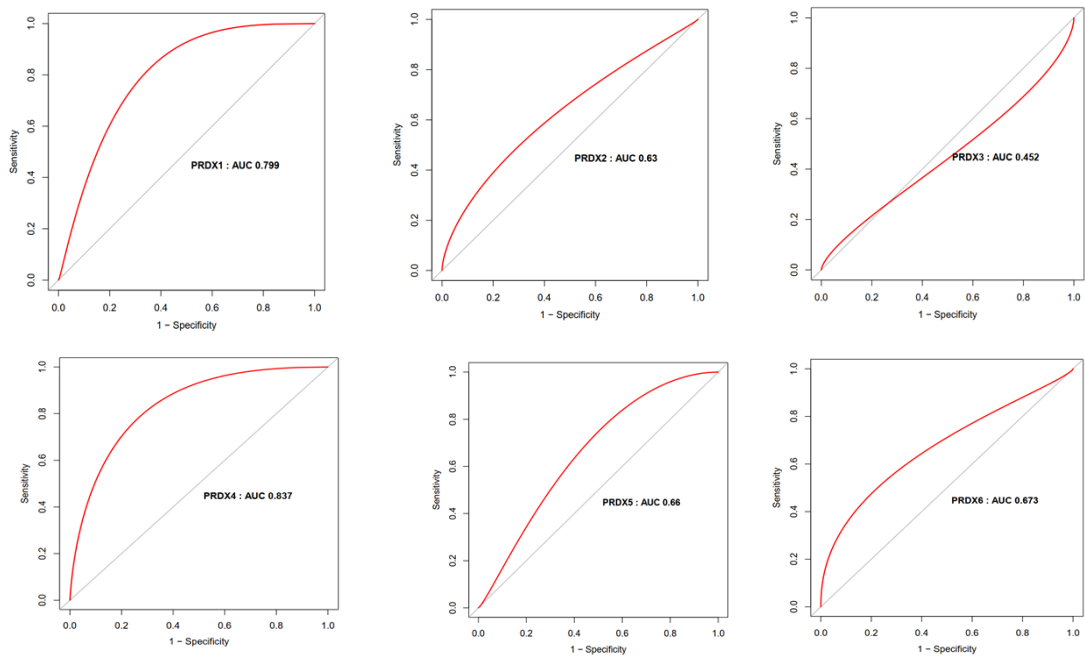


Figure.S4

A



B

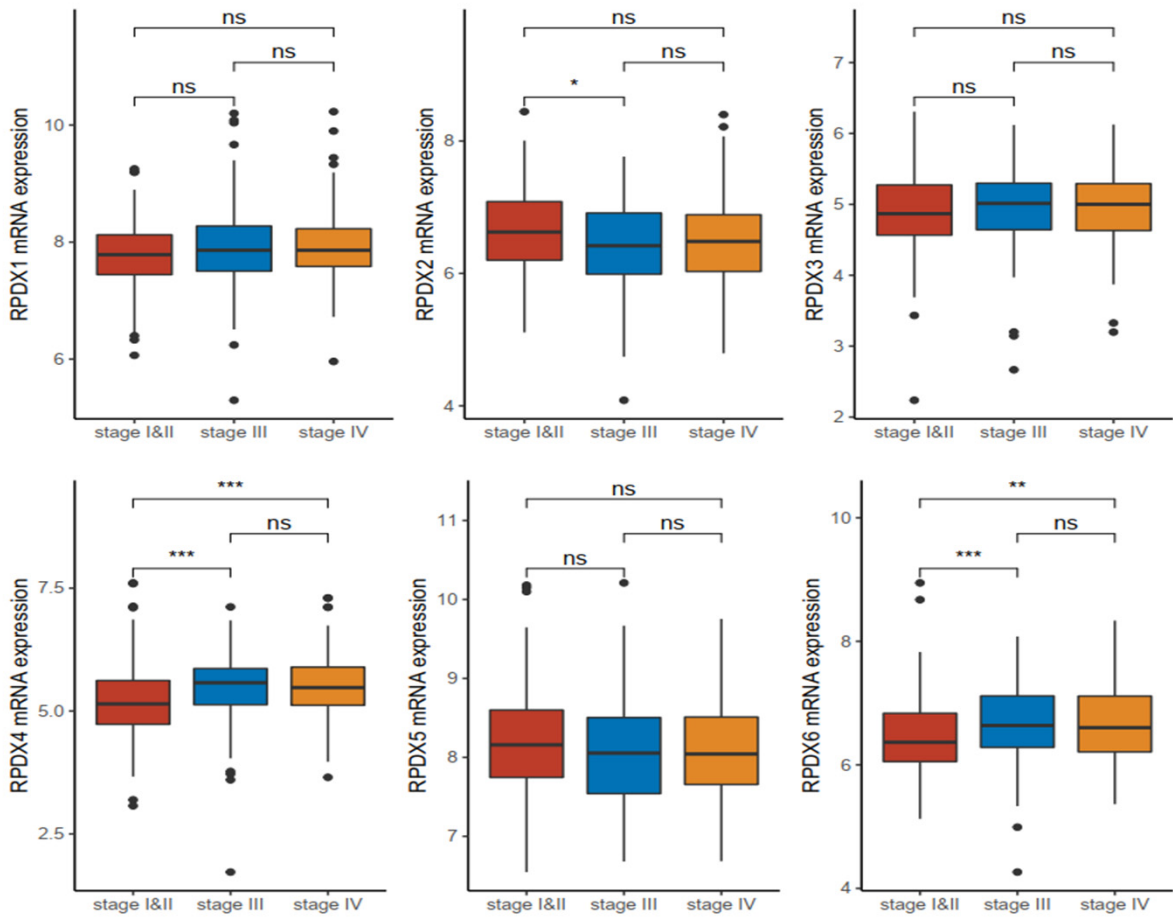


Table S1 The associations of PRDXs and mRNAsi.

CancerType	PRDX1		PRDX2		PRDX3	
	cor	pvalue	cor	pvalue	cor	pvalue
TGCT	0.662515	0	-0.06596	0.414386	0.26808	0.000775
UCEC	0.499293	0	0.320639	6.16E-14	0.246003	1.18E-08
BRCA	0.456143	0	0.236001	3.99E-15	0.062662	0.038969
HNSC	0.447386	0	0.454016	0	0.190253	2.07E-05
LUSC	0.432584	0	0.458464	0	0.205984	4.91E-06
UCS	0.431032	0.001013	0.459945	0.000418	0.225632	0.094539
LUAD	0.417209	0	0.214372	1.12E-06	0.460025	0
COAD	0.390515	0	0.357645	1.13E-14	0.416368	0
KIRP	0.388799	1.55E-11	0.271295	3.82E-06	0.408927	8.98E-13
OV	0.382456	1.76E-10	0.351494	5.47E-09	0.368605	8.60E-10
LIHC	0.368428	3.32E-13	0.153647	0.003074	-0.04513	0.386505
STAD	0.363988	1.21E-12	0.383337	4.92E-14	0.385884	3.07E-14
SARC	0.315967	2.53E-07	0.125838	0.043493	0.186771	0.002633
READ	0.309497	9.13E-05	0.305394	0.000114	0.3868	7.54E-07
CESC	0.302641	9.00E-08	0.279571	8.46E-07	0.013018	0.821357
MESO	0.287042	0.007555	-0.05522	0.612938	0.232228	0.031648
BLCA	0.276518	1.83E-08	0.404675	0	0.166558	0.000789
KIRC	0.267753	8.05E-10	0.214567	9.68E-07	0.363213	8.25E-18
PAAD	0.265948	0.000823	0.263264	0.000933	0.125365	0.118835
ESCA	0.257846	0.001031	0.356243	4.39E-06	0.448271	4.11E-09
CHOL	0.250965	0.139583	0.098842	0.564956	0.198713	0.244315
GBM	0.216541	0.005156	0.484728	4.26E-11	0.00322	0.967132
PRAD	0.192063	1.86E-05	0.345228	4.19E-15	0.433857	0
THCA	0.171614	0.000109	0.332477	2.28E-14	0.394367	0
SKCM	0.165132	0.000325	-0.05564	0.228042	0.25464	2.35E-08
LAML	0.041478	0.619966	0.021973	0.792835	0.416194	2.52E-07
DLBC	0.03528	0.811404	-0.01465	0.921231	0.310139	0.032367
ACC	-0.08689	0.4486	0.475512	1.39E-05	0.227937	0.044946
KICH	-0.10375	0.413622	0.498397	3.55E-05	0.078571	0.536229
UVM	-0.14534	0.197928	0.071683	0.526709	0.215026	0.055594
LGG	-0.40949	0	0.397624	0	0.19773	5.44E-06
PCPG	-0.41279	9.69E-09	0.292609	6.57E-05	0.197628	0.007575
THYM	-0.57007	0	0.666764	0	0.163018	0.076528

(continue)

CancerType	PRDX4		PRDX5		PRDX6	
	cor	pvalue	cor	pvalue	cor	pvalue
TGCT	0.359035	5.21E-06	-0.05548	0.492538	0.004921	0.951502
UCEC	0.273262	2.11E-10	0.041268	0.344275	0.36993	0
BRCA	0.461305	0	0.062224	0.040359	0.357279	0
HNSC	0.090357	0.044313	0.101004	0.024515	0.376125	0
LUSC	0.003724	0.934707	0.016492	0.716766	0.445858	0
UCS	-0.01784	0.896022	0.241012	0.073706	0.085988	0.527581
LUAD	0.315692	4.05E-13	0.009767	0.825946	0.439484	0
COAD	0.313762	1.92E-11	0.144268	0.002383	0.26202	2.55E-08
KIRP	0.235281	6.53E-05	0.336008	7.89E-09	0.347797	2.18E-09
OV	0.273163	7.27E-06	0.211506	0.000556	0.280531	4.02E-06
LIHC	0.099751	0.055261	0.366381	4.62E-13	0.291637	1.28E-08
STAD	0.361655	1.74E-12	0.221967	2.13E-05	0.318356	7.13E-10
SARC	0.161406	0.009467	0.134931	0.030325	0.354139	6.22E-09
READ	0.175294	0.028729	0.127477	0.112713	0.245329	0.002077
CESC	0.129904	0.02379	-0.01952	0.7349	0.274216	1.38E-06
MESO	0.057069	0.60108	0.276513	0.010163	0.338271	0.001529
BLCA	0.094718	0.057172	-0.07398	0.13764	0.096825	0.05184
KIRC	0.168548	0.000126	0.2471	1.53E-08	0.327502	3.48E-14
PAAD	0.139856	0.081641	0.28816	0.00028	0.436598	1.73E-08
ESCA	0.293367	0.000177	0.187774	0.017536	0.236262	0.002693
CHOL	0.050193	0.770682	0.058172	0.735368	0.380952	0.022539
GBM	-0.02262	0.772193	0.203355	0.008692	-0.33106	1.48E-05
PRAD	0.383037	0	-0.01697	0.70715	0.118887	0.008298
THCA	-0.07716	0.083228	0.2027	4.61E-06	0.253386	8.71E-09
SKCM	-0.07963	0.084297	0.090325	0.050128	-0.02843	0.538035
LAML	0.369887	5.48E-06	-0.27407	0.000886	0.334168	4.42E-05
DLBC	-0.014	0.924734	0.052215	0.72377	0.348676	0.015583
ACC	0.099736	0.384186	0.25085	0.026996	0.204315	0.072854
KICH	-0.01914	0.880476	0.071291	0.574741	0.262134	0.036689
UVM	0.227496	0.042618	0.023019	0.839105	0.105767	0.349711
LGG	0.039735	0.364468	0.275996	1.61E-10	-0.55083	0
PCPG	-0.2549	0.000536	0.237951	0.001253	-0.07755	0.297788
THYM	-0.38582	1.71E-05	0.043249	0.64003	0.296589	0.001105

Table S2 The univariate cox and multivariate cox of PRDXs and clinical characteristics.

Characterics	Unicox			Multicox		
	HR	95%CI	<i>P</i>	HR	95%CI	<i>P</i>
age	1.033	1.017-1.049	<b>&lt;0.001</b>	1.031	1.014-1.048	<b>0.00031</b>
gender	0.897	0.648-1.241	0.512	0.897	0.644-1.251	0.522
stage	2.228	1.539-3.227	<b>&lt;0.001</b>	2.066	1.408-3.032	<b>&lt;0.001</b>
grade	0.344	0.085-1.388	0.133	0.749	0.178-3.16	0.695
PRDX1	1.445	1.147-1.82	<b>0.001</b>	1.158	0.896-1.499	0.262
PRDX2	0.984	0.791-1.224	0.884	1.046	0.835-1.309	0.697
PRDX3	0.969	0.736-1.276	0.821	0.998	0.736-1.355	0.991
PRDX4	1.184	0.953-1.469	0.126	0.939	0.734-1.201	0.615
PRDX5	1.024	0.805-1.304	0.845	1.143	0.887-1.473	0.301
PRDX6	1.394	1.11-1.75	<b>0.004</b>	1.275	0.979-1.659	<b>0.071</b>

Table S3 The associations between target drugs and PRDXs expression levels.

<b>Drug</b>	<b>PRDX1</b>	<b>PRDX2</b>	<b>PRDX3</b>	<b>PRDX4</b>	<b>PRDX5</b>	<b>PRDX6</b>
Vandetanib	0.194647	-0.0182	0.563382	0.339325	0.114883	0.438373
Gemcitabine	0.149144	0.070469	0.213025	-0.05886	-0.19928	0.051208
AZD8055	0.147519	0.150818	0.084566	0.031925	-0.04212	0
Z-LLNle-CHO	0.131679	0	-0.06794	0.019206	-0.03942	0.090389
GDC-0941	0.131137	0.065384	0.317817	0.104295	-0.04263	0.010344
Doxorubicin	0.128033	0.110062	0.179063	-0.10524	-0.17022	0.478478
Irinotecan	0.11119	0.094764	0.184622	-0.12484	-0.18223	0.041502
17-AAG	0.107565	0	0.180897	-0.04648	0.054854	0.091082
lapatinib	0.087885	0.036537	0.102143	-0.14497	0.120357	0.086827
Mitomycin-C	0.08725	0.184876	0.104634	-0.07691	-0.12918	0.025398
temsirolimus	0.082543	0.145909	0.107624	0.264633	-0.05428	0.363514
Crizotinib	0.081912	0.095706	0.319006	0.263822	-0.07995	0.527947
Pazopanib	0.053164	0	0.200807	0.20384	-0.0525	0.478478
BIBR-1532	0.050339	0.182783	0.051799	0.012032	-0.02248	0
GNF-2	0.021132	0	-0.04187	-0.05813	-0.09106	0.200791
FTI-277	0.018747	0	-0.0439	-0.00509	0.082744	0.033056
bortezomib	0	0.167132	0	0	0	0
TAE684	-0.01805	0.089642	-0.12224	0.154983	0.094301	0.077648
OSI-906	-0.03159	0.074328	-0.06358	0.089355	0.076518	-0.05009
salermide	-0.04906	0.168997	-0.03464	0.032716	0	0
cediranib	-0.10654	0.04304	0.051591	0.118544	-0.02912	-0.08283
BIX-01294	-0.11153	0.18406	-0.10008	-0.09922	-0.09112	-0.17917
staurosporine	-0.12849	0.005329	0.019075	0.174245	-0.01122	-0.06783
Topotecan	-0.16783	0.160954	0.182319	-0.08754	-0.11819	-0.05245
ML312	-0.18256	0.105382	-0.07989	0.178524	0.01736	-0.02497

# Freescience Editorial Team

## Certificate of English Editing

### Paper Title

Integrative analysis the characterization of peroxiredoxins in pan-cancer

### Authors

Lei Gao<sup>1†</sup>, Jialin Meng<sup>2†</sup>, Chuang Yue<sup>3†</sup>, Xingyu Wu<sup>3</sup>, Quanxin Su<sup>3</sup>, Hao Wu<sup>3</sup>, Ze Zhang<sup>3</sup>, Qinzhou Yu<sup>2</sup>, Shenglin Gao<sup>3\*</sup>, Song Fan<sup>2\*</sup>, Li Zu<sup>3\*</sup>

This certificate is issued as a confirmation that the paper mentioned above has been proofread and edited for language clarity and grammar by professional editors of our company.

We guarantee that the original message was not distorted, and that the paper is understandable and free of errors assuming that the changes and suggestions given are accepted, and text is not altered without our knowledge

Date of Editing: 06-11-2021

